

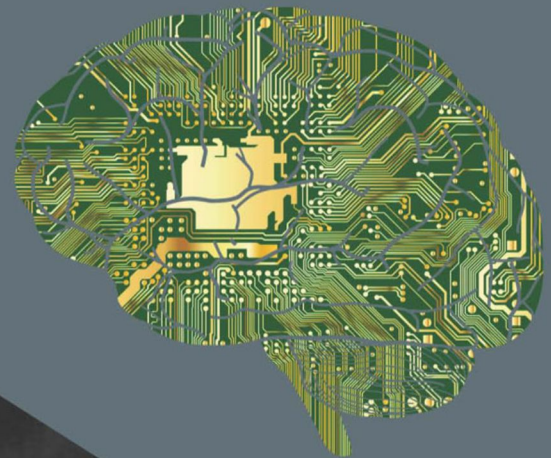


Department of Science & Technology
Government of Gujarat



IT QUIZ QUESTION BANK

1500+ reference question to enrich your knowledge on
Information Technology



GUJARAT COUNCIL ON SCIENCE AND TECHNOLOGY
Dept of Science & Technology, Government of Gujarat

Block B, 7th Floor, M. S. Building, Nr. Pathikashram, Sector 11,
Gandhinagar-382011, Phone: 079-23259362

Fax: 079-23259363, Email: info-gujcost@gujarat.gov.in

Digital India Journey in the Last 5 Years

Touching the Lives of Every Indian



Narendra Modi
Hon'ble Prime Minister of India





Department of Science & Technology
Government of Gujarat

Question Bank for IT Quiz

[For Secondary and Higher Secondary school Students]



Investing in **Science**: Investing in the **Future!**

GUJARAT COUNCIL ON SCIENCE AND TECHNOLOGY
Dept of Science & Technology, Govt of Gujarat
Block B, 7th Floor, M. S. Building, Sector 11, Gandhinagar 382011
Phone: 079-23259362-68, Fax: 079-23259363
Website: www.gujcost.gujarat.gov.in
Email: info-gujcost@gujarat.gov.in

GUJARAT COUNCIL ON SCIENCE & TECHNOLOGY

Dept of Science & Technology, Govt of Gujarat

Investing in Science: Investing in the Future!

About GUJCOST:

Gujarat Council on Science and Technology (GUJCOST), working under the aegis of the Dept of Science & Technology, Govt of Gujarat, is the nodal organization for promotion of science education, awareness, research and development through its various programmes and outreach activities across the state.

Established in September 1986 to play catalytic role in promoting the use of Science and Technology in the development process of the state, GUJCOST becomes an autonomous body registered under the Societies Registration Act in February 2000.

About IT Question Bank:

Following are the multiple choice questions (MSQ) based on computer and information technology.

Total 16 section has 100 MCQ's. Students are encouraged to practice section-wise.

Each question has four choices. Please select the correct answer.

The practice with this question bank will definite enhance the curiosity level understanding and confidence of the students to capture new concepts and contents in this ever-prosresting field.

All the best for your attempt.

PREFACE

The COVID 19 pandemic has pushed us collectively into a digital future, and it's happening right now, every single moment. It seems that the world is changing before our eyes as COVID-19 has sent us all home and forced us and our institutions to change the way we operate overnight.

Technology has become a major portion of everyday life. Information Technology (IT) has changed our lives drastically. One is only a single click away from everything.

With increasing knowledge and technological progress of society; our country requires learning skills that could help it keep pace with the development of science and technology.

With a view to support students in the endeavor to encourage thinking and to make them aware of the IT facts and to increase the knowledge of the IT related terminologies GUJCOST has prepared a "IT Quiz Question Bank" with more than 1500 multiple choice questions in quiz format on different aspects of information technology, internet of thing, computer fields for students and teachers and science communicators.

Quizzing is not just about GK, but about connecting the dots, reading between the lines and arriving at a conclusion. It needs to focus on logical reasoning.

The "IT Quiz Question Bank" is a compendium, will be help students to practice and have a feel of their own understanding level of IT.

In this documents the questions are not just on the mere recall or rudimentary comprehension but they have been designed to increase the student skill of problem solving. It is important to note that the larger intent of this resource is to provide students and teachers with a framework of practice questions which is based on analysis-based learning and problem solving.

We hope that students and teachers will welcome this document and use it jumpstart their own thinking and engagement processes. We also hope that this becomes a ready reckoner for preparation of any IT quiz and exam such as the National Rural IT Quiz and other similar competitions.

We look forward to feedback, comments and suggestions on how to improve and add value for students.

An e-copy of the IT Question Bank has also been made available on GUJCOST website <https://gujcost.gujarat.gov.in/> and can be easily downloaded.

**Gujarat Council on Science and Technology
(GUJCOST), Gandhinagar**

Digital revolution now across villages in Gujarat

Digital Seva Setu



No need to visit district or taluka headquarters for government administrative works. Within no time, citizens can avail all the services at the local Gram Panchayat.

Affidavit will also be done in the village itself. The authority will be provided to Talati of the Gram Panchayat.



Digital Seva Setu An initiative under Digital Gujarat Mission to make technology and administration reach to the people in the remotest areas of the state.



Income Certificate



Ration Card



Certificates for Unreserved Category



Certificates for Widow Benefits



Religious Minority Certificates



7/12 and 8/A Documents



More than 22 such governmental scheme benefits can be now availed at Gram Panchayat itself. 2000 gram panchayat's will be covered in the first phase & 8000 gram panchayat's till dec 2020

Benefits:



Saves precious time



Relief from additional expenses



All services available at Gram Panchayat of the village



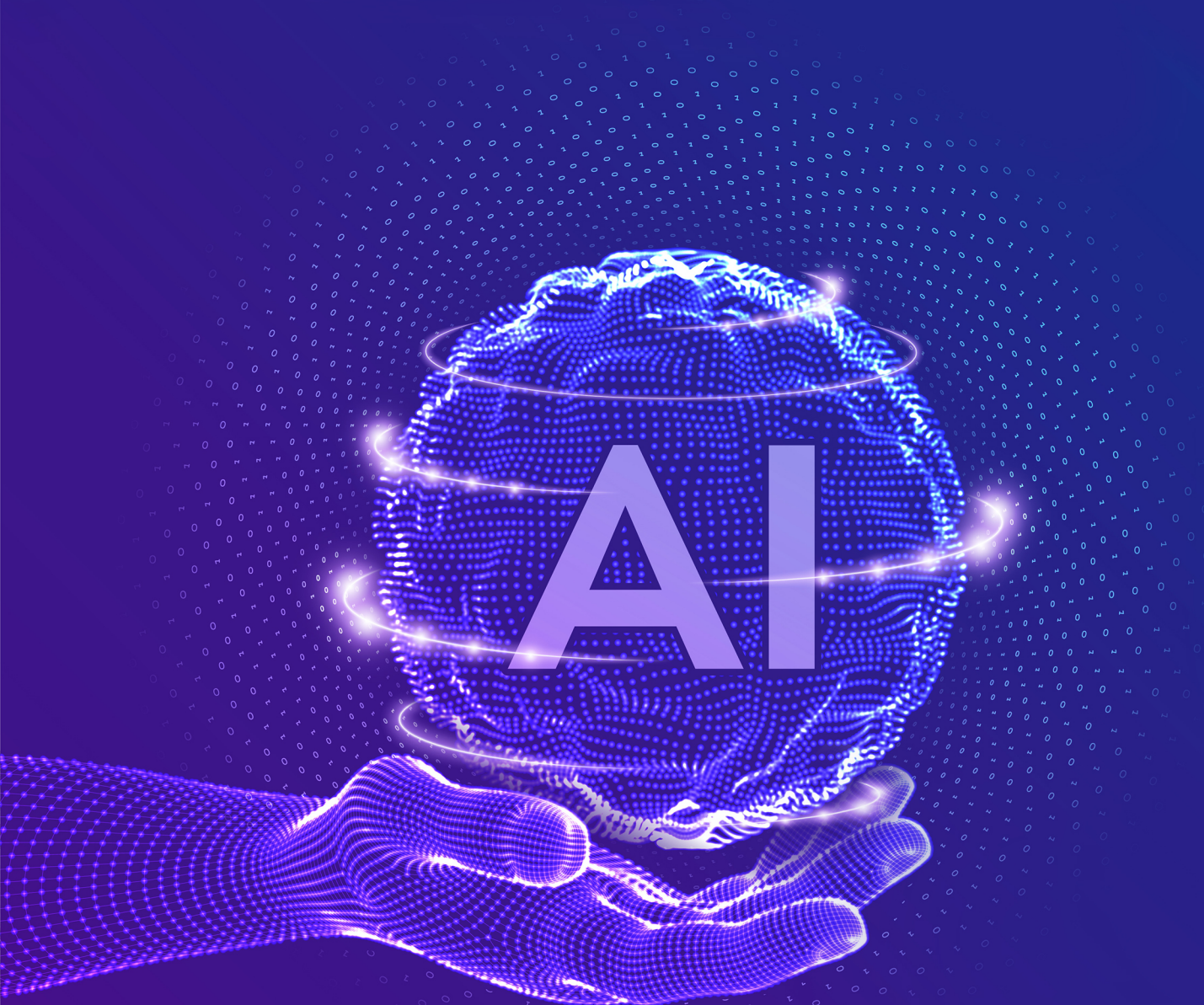
Essential services can be availed quickly



One-stop destination for all services

Section-1

ARTIFICIAL INTELLIGENCE



Artificial intelligence is intelligence demonstrated by machines, as opposed to the natural intelligence displayed by humans or animals.

Section-1

Each Section has 100 Multiple Choice Questions (MCQ).
Each question has four choices. Student to Tick the correct answer.

Sr. No.	Question	A	B	C	D
1	The smallest possible unit of data is.....	Bit	Byte	BCD	EBC
2	Which of the following is not MS Operating System?	Windows MT	Windows XP	Windows 98	Windows NT
3	An Individual dot on a Computer screen is called a	Font	Character	Pixel	Screen point
4	Find the odd man out.	Coaxial cable	Microwaves	Optical fibre	Twisted pair wire
5	India's first super computer is...	Agni	Flow solver	Param	Trisul
6	One byte is equivalent to...	4 bits	8 bits	12 bits	32 bits
7	An IP address is a bit.	12	18	32	5
8	What is the full form of IP?	Interface program	Interface protocol	Internet program	Internet protocol
9	Select the smallest memory size.	Terabyte	Gigabyte	Kilobyte	Megabyte
10	_____ is called the brain of computer.	Keyboard	Mouse	Memory	CPU
11	_____ is used to read the code hidden on bars of product pack.	Bar Code reader	Bar reader	OCR	OMR
12	The unit of memory is...	Sec	HP	Hz	Byte
13	To delete the character towards left side, Is used.	Del	Insert	Backspace	Home
14	DVD means...	Digital Versatile Disk	Digital Varied Disk	Digital Variable Disk	Digital Volume Disk
15	Which one is web browser?	Outlook	Word	Internet Explorer	None of these
16	1 MB= KB.	12	1024	167	256
17	'JPG' extension refers usually to what kind of file?	System file	Animation/movie file	MS Encarta document	Image file
18	Which of the following is a medium of output ?	Scanner	Mouse	Printer	Keyboard
19	Which of these keys is not on the number keypad ?	Ctrl	Del	Enter	Num lock
20	Web pages are written using...	FTP	HTTP	HTML	URL
21	Where is the headquarters of Microsoft located?	Redmond, Washington	Richmond, Virginia	Santa Clara, California	Tucson, Arizona
22	The extension given to the paint file is ..	.doc	.txt	.bmp	.rtf
23	OMR stands for _____	Optical Mark Reader	Optical Mark Register	Operating And	Minimum Cell Rate

				Maintenance	
24	Father of computer is called--	Marconi	Adison	Charls Babbage	None of these
25	PARAM was developed by.....	C-DAC	IIT kanpur	BARC	None of these
26	What is the shortcut for choosing italic letters in MS Office?	Ctrl + I	Ctrl + U	Ctrl + M	Ctrl + N
27	Founder of Microsoft Company is-	Paul Allen	Bill Gates	Both	All of these
28	A billionth of a second is defined as a:	millisecond	microsecond	nanosecond	picoseconds
29	Which of the following is not currently a topic in computer science?	Speech recognition	Artificial intelligence	Thermodynamics	Multiprocessing
30	What type of device is a computer keyboard?	Input	Output	Software	Storage
31	What is the fullform of 'AMOLED'	Active Matrix Organic Light Emitting Diode	Active Matrix Organic Link Emitting Diode	Active Matrix Organic Link Emitting Dicode	Active Matrix Organic Light Emitting Dicode
32	Who created the game Angry Birds ?	Rovio	Subway	Counter-Strike	Temple Run
33	Which of these is not from Apple?	Ipod	Windows	Iphone	Mac Book
34	Which of this is not from Google?	Bing	Picasa	Android	None of these
35	CTRL+SHIFT+P is assigned for.....	Print	Font size	Print preview	None of these
36	The minimum zoom percentage is.....	0.02	0.1	0.05	0.08
37	Data can be stored in CD ROM using ..	CD Writer	Floppy Disk	CD Drive	Writer
38	The VLSI designed computer associated with thegeneration.	Fourth	Second	Third	First
39	All arithmetic and logical operation are executed under block.	CPU	MU	ALU	CU
40	Which of the following is standard output device?	Monitor	CPU	Mouse	Keyboard
41	The electronic device technology that formed the base of Second Generation Computer is	IC	Vacuum Tube	Transistor	None of these
42	The indicates where the character you type will appear on screen	Space Key	Shift key	Cursor	Ctrl Key
43 is high level programming language.	Basic	Machine language	Alp	None of these
44is fastest memory	RAM	ROM	Floppy Disk	CD Rom
45 Unit is in between input and output device of computer	EPROM	RAM	Printer	CPU
46	Monitor access data from	Display Card	Magic Card	NIC	FAX

47	The Vacuum tube in pc is known as	CRT	Monitor	Screen	All of these
48	A stand alone computer cannot work without	RAM	Monitor	Screen	All of these
49	Mouse & printer device came under.....	Processing device	Output & input device	Input & Output respectively	None of these
50 Is equivalent to 1 MB.= 1 MB	1000KB	1022KB	1024 KB	1000GB
51	In Operating System, which term define best "multi-task".	You are working in spreadsheet	More than one user can run same program	Display only memory information	Both Way
52	In booting process memory checking for	Not need	Traditional way	Display only memory information	Checking & Verify conventional memory
53	A flat Magnetic part is known as	CD	RAM	ROM	CPU
54	A set of sectors is called	Tracks	Cylinder	Cluster	None of these
55	Data Access had searches data, one platter to another, This data searching time is called.....	Latency	Transfer rate	Seek Time	Total Time
56	Mainframe has ability for	Protecting file with password	Multi user and multi tasking	Handling large amount of data	All of these
57	Which of the following is a hexadecimal number?	320A	10010001	5giiTXB.	29
58	Between CPU and Mouse, the communication is from	Both Way	CPU to Mouse	Mouse to CPU	None of these
59	Which of the following is input device?	Mic	Speaker	Printer	Monitor
60	The Base 2 number system used by Computer is known as	Octal number system	Decimal number system	Hex number system	Binary number system
61	The Computer on your Desktop is under.....category	Micro Computer	Mini Computer	Mainframe	Super Computer
62	Normally when power is switch off, information stored inis lost	Hard Disk	ROM	CD	RAM
63 is set of instructions that tells the hardware of computer what to do.	Key board	Mouse	Programs	CD
64	Which of the following is used to display large image?	Plasma	MRT	CRT	LCD

65	Data is stored initially in	RAM	CPU	DISK	CD
66	Which of the following is not a function of OS ?	Allows to send data from one computer to other	Manage the system	Manages I/ O device	All of these
67	PDA is Stands for.....	Personal Digital Assistant	Private Digital Assistance	Portable Digit Assistant	Public Dum Assistant
68	One GB is	Approx 1000bits	Approx. 1 byte	Approx. 1000 megabytes	None of these
69	The Main part of CPU is	ALU	CU	MU	All of these
70	A Statistic for measuring how long a drive takes to read or write data is called	Refresh Time	Access Time	Seek Time	Process Time
71	using application like office Automation, desktop etc. have been made possible due to arrival of..... Computer	Mini	Super	Micro	Mainframe
72	Windows 95/98 NT is an.....	Program me	Operating System	Compute r	System
73	Driver files are used to.....	Used to install program me	enable all drives	Closes the program me.	All of these
74	Which type of computer provides a user with most compactness ?	PDA	Mini	Micro	Super
75were used for hardware Implementation in the first generation.	IC	Transistor	EC	Vacuum tube
76	External Devices such as those used for input and output are connected via	Monitor	Mouse	Port	Cable
77	FAT stands foe	File Allocation Table	Find Allocate Table	Follow Allow Table	None of these
78	Software is collection of.....	Program	Information	Hard ware	All of these
79 is known as temporary or volatile storage device.	ROM	RAM	EPROM	EEROM
80	The software available in computer system can be categorized as.....	System Software	Hardware	System & Application	System User
81	Operating System is installed on.....	Cache memory	Mother board	Hard disk	None of these
82 is the process of creating a duplicate set of programs or data files for safe keeping	Rename	Retrieve	Back up	File

83 Is called modifier key	Ctrl	Shift	Alt	All of these
84	Normally LPT1 port is used to connect	Monitor	Printer	CD-Rom	Keyboard
85	The touch-screen Monitors accept input directly through	Printer	Key board	Scanner	Monitor
86	The processing function is divided between.....	Memory	Processor	A,B both	None of these
87	The hardware or physical component of the computer consists of	Storage device	I/O device	RAM	All of these
88	The term that refers to the part of computer which you can touch is.....	Hardware	Software	Virus	Program
89	On your desktop computer, to store the character XY in memorybits are required	4	8	16	20
90	P-3 450 MHz "in this term, MHZ is a unit of.....	HDD	Time	Frequenc y	None of these
91	Assembler, linker, complier, interpreter are the type of	User	hardware	System Software	Computer
92 is simply a set of instruction that has been given a name.	Instructio n	Batch File	Folder	Procedure
93 printer create images directly on paper by spraying ink through tiny nozzle	Inkjet	Laser	Dot matrix	None of these
94refers the set of electronic Instruction that tells the hardware what to do.	Hardware	Software	Data	None of these
95	ROM Stands for	Read Only Memory	Read Active Memory	Ready Access Memory	Random Access Memory
96	Most I/O device manufactures provide one of the following for OS.	Device driver	Device interface	Device interchange	GUI
97	Normally when power is switched off, data stored indoes not los.	RAM	Cache	CPU	Hard disk
98	The double sided and double density 5.25"flopy disk can storeof data	1.44MB	1.22MB	1.2KB	1.2 MB
99	In floppy disk which tab enforces read only technology?	Write Protect Tabs.	Read Protect Tab	Word Protect Tab	Tab
100	The Software used to control the computer & run programs is called...	Games	Application s/w	system Software	Virus

Answers

1	Bit
2	Windows MT
3	Pixel
4	Microwaves
5	Param
6	8 bits
7	32
8	Internet protocol
9	Kilobyte
10	CPU
11	Bar Code reader
12	Byte
13	Backspace
14	Digital Versatile Disk
15	Internet Explorer
16	1024
17	Image file
18	Printer
19	Ctrl
20	HTML
21	Santa Clara, California
22	.bmp
23	Optical Mark Reader
24	Charls Babbage
25	BARC
26	Ctrl + I
27	Both
28	nanosecond
29	Thermodynamics
30	Input
31	Active Matrix Organic Light Emitting Diode
32	Rovio
33	Windows
34	Bing

35	Font size
36	0.1
37	CD Writer
38	Fourth
39	ALU
40	Monitor
41	Transistor
42	Cursor
43	Basic
44	RAM
45	CPU
46	Display Card
47	All of these
48	RAM
49	Input & Output respectively
50	1024 KB
51	You are working in spreadsheet
52	Checking & Verify conventional memory
53	CD
54	Tracks
55	Seek Time
56	Handling large amount of data
57	320A
58	Mouse to CPU
59	Mic
60	Hex number system
61	Micro Computer
62	RAM
63	Programms
64	Plasma
65	RAM
66	Allows to send data from one computer to other

67	Personal Digital Assistant
68	Approx. 1000 megabytes
69	All of these
70	Access Time
71	Super
72	Operating System
73	enable all drives
74	PDA
75	Vacuum tube
76	Port
77	File Allocation Table
78	Program
79	RAM
80	System & Application
81	Hard disk
82	Back up
83	Alt
84	Printer
85	Monitor
86	A,B both
87	All of these
88	Hardware
89	20
90	Frequency
91	System Software
92	Batch File
93	Inkjet
94	Software
95	Read Only Memory
96	Device driver
97	Hard disk
98	1.2 MB
99	Write Protect Tabs.
100	system Software

Section-2

AUGMENTED REALITY (AR)

AUGMENTED REALITY IS AN INTERACTIVE EXPERIENCE OF A REAL-WORLD ENVIRONMENT WHERE THE OBJECTS THAT RESIDE IN THE REAL WORLD ARE ENHANCED BY COMPUTER-GENERATED PERCEPTUAL INFORMATION, SOMETIMES ACROSS MULTIPLE SENSORY MODALITIES, INCLUDING VISUAL, AUDITORY, HAPTIC, SOMATOSENSORY AND OLFACTORY.



Section-2

Each Section has 100 Multiple Choice Questions (MCQ).
Each question has four choices. Student to Tick the correct answer.

Sr. No.	Question	A	B	C	D
101	When the computer is turn on, which of the following memory is used at all time?	O/s Shell	O/s Kernel	O/s Interface	O/s server.
102	On MS Windows System, Which one of the following resides in memory all time.	Sector indicator	Fat+D171	Fast IDE	disk cache
103	Which of the following is not a type of an operating system?	ASCII	Linux	UNIX	Windows
104	Which one of the following is an input device?	Printer	Speaker	Scanner	Plotter
105	Secondary Storage refers to.....	Processo r	Fetch	Write Back	Measure
106	An Operating System is	Inaccessi ble through the tree	A Collection of programs that enables you .	Permane ntly burned into the memory	None of these.
107 is a part of the Central Processing Unit	JCL	ALE	ALU	KJL
108	You might find all of the following peripheral ports on a personal computer except	Pass	USB	Serial	Parallel
109	An advantage to a touch screen is.....	it is not as tiring as keyboard input	It is natural to touch things	It uses little screen space for each choice	None of these.
110	Common extension of sound file is.....	MIDI	DAT	WAVE	None of these
111	In system, buffers are placed in	Autoexec .bat	Config.sys	Both 1 & 2	None of these
112 is the best device to work with GUI	Mouse	Command line	Touch Screen	None of these
113	Software get from friends is	Licensed Software	Computer Software	Friends Software	None of these
114	A person able to navigate computer is considered as	Compute r Dealer	Computer Purchase	Compute r Literate	None of these
115	You save or store a file at in Computer.	Storage device	Desk	Directory	Both A&C
116	"Press any key to continue" is displaying key	Echo	Pause	Exit	End
117	If file will be closed then	Delete from RAM	Delete from Window	Automati c save a file	None of these
118	In which of the following we can store maximum data?	CD-ROM	DVD	CD	Floppy Disk

119	Software that is used to make system faster and easy is	Package	Application Software	System Software	None of these
120	In which of the following memory, you can't write?	RAM	ROM	CD	Floppy
121	In Windows 2000 Grouping of files in known as	Subfolder	Folder	File	Diary
122 is an output device	Keyboard	Printer	Mouse	Joystick
123	Video display is related to	Input	Output	Keyboard	None of these
124 is used as input as well output device.	Printer	Mouse	Both A & B	None of these
125	If you will add any hardware, which of the following program you need?	Driver	Device Driver	Application Software	None of these
126 will convert high level language to machine language	Executor	Assembler	Transistor	None of these
127 cables can transmit data at high speeds.	UTP	Coaxial	Optical Fiber	Simple
128	The buying of product over cell phone is called.....	E-Commerce	C – Commerce	B-Commerce	M- Commerce
129 is not required for multimedia system.	CD Drive	A/c Software	75 MHz Pentium	Speakers
130	Upper Memory block is represented as.....	Extended Memory	External Memory	Internal Memory	Integrated Memory
131	TSR stands for	Terminal Stay Relay	Try Stay Relay	Terminate And Stay Resident	Terminate Stay Relay
132	The lowest memory devices in terms of cost / bit are	Compact disk	Hard disk	DVD	None of these.
133 is not logic gate.	NEC	AND	OR	NOT
134 is used as standard pointing device in GUI.	CD	Keyboard	Mouse	Wire
135 largest firm of hard disk drives.	BPO	IBM	Seagate	Micro
136	Computer means	Translate high level language to machine language	Translate machine level language to high language.	General level	None of these
137	ROM program is	Software	Firmware	Hardware	Firmware
138	MU is one part of	CU	CPU	VDU	ALU
139	Machine Language is	Only language for computer	Language in which program written	Differs from one pc to another	All of these

140	Assembly language stands for	Easy Language	Need no translate	None of these	Used in Machine language
141 designs floppy disk drivers.	Nokia	Inter	Sony	None of these
142	Pixel stands for	File format	Smallest Resolution	Program	None of these
143	Cursor means	Click	Pixel	Blinking Line	Pointing
144 relates with scanner.	Taiwan	Media	Mouse	Mercury
145 computer peripheral firm that empowering your PC.	Nokia	Canon	Espon	Print
146	Which of the following memories is an optical memory?	Floppy Disk	Bubble Memories	CD-ROM	Core Memories
147	Java was originally invented by...	Oracle	Microsoft	Novell	Sun
148	Whose trademark is the operating system UNIX?	Motorola	Microsoft	BELL Laboratories	AshtonTate
149	Which of the following is the most powerful type of computer?	Super-micro	Super conductor	Super computer	Megaframe
150	In EPROM cycles allowed.	1000	100	10	1
151	EPROM is used for	Erase & reconstruct	ROM erase	Duplicating ROM	None of these.
152	DMA means	Direct Memory Active	Direct Method Access	Direct Memory Access	None of these
153	DNS refers to....	Data Number Sequence	Digital Network Service	Domain Name System	Disk Numbering System
154	The unit of speed used for super computer is	KELOPS	GELOPS	MELOPS	None of these
155	The first mechanical computer designed by Charles Babbage was called...	Abacus	Analytical Engine	Calculator	Processor
156	Which gate is a single integrated circuit?	Gate	Mother Board	Chip	CPU
157	C Language is...	A third generation high level language	A machine language	An assembly language	All of the above
158	Web pages are written using...	FTP	HTTP	HTML	URL
159	The parity bit is added for the purpose of	Coding	Error detection	Controlling	Indexing

160	Which of the following is NOT operating system?	Dos	Unix	Window NT	Java
161	The computer that is not considered as a portable computer is	Laptop computer	Mini computer	Notebook computer	None of these
162	Which of the following is an example of non volatile memory?	VLSI	LSI	ROM	RAM
163	Graphic interfaces were first used in a xerox product is called...	Ethernet	Inter LISP	Small talk	Zeta LISP
164	Which of the following is need to build dynamic web documents?	CGI	Java	HTML	All of the above
165	ROM is composed of...	Floppy disks	Magnetic cores	Microprocessors	Photoelectric cells
166	Which command combines the contents of one file with another?	RESTORE	RENAME	APPEND	AD
167	Find the odd man out.	Google	Lycos	Altavista	Java
168 Use to separate more than one e-mail address.	/	:	,	>
169	BPS stands for	Bit Per Schedule	Bit Per Sentence	Bit Per Second	None of these
170	Which is not web browser?	Windows Explorer	Mozilla	Internet Explorer	Netscape navigator
171 allows computer to communicate with other computer using telephone.	HUB	Modem	FTP	Cable
172	A combination of hardware and software that links two types of network is called....	Gateway	FTP	Hub	MTP
173	The first network in world is	Nicenet	Net	Icenet	Arpnet
174	In internet device is used to connect two or more network is called..	Gateway	Hub	Router	FTP
175	In address http://www.microsoft.com HTTP stands for...	Hyper text transfer protocol	High text transfer point	Hyper text transform protocol	None of these
176	In following topologies which is invalid.....	Bus	Ring	Network	Star
177	The first movie released in 1982 with terrific computer animation and graphics was...	Star wars	Tron	Forbidden planet	Dark star
178	ISDN stands for...	International Standard Digital	International Subscriber Dialing	Integrated Service Digital Network	Integrated System Digital Network
179	Find the odd one out.	Network	Wi-Fi	c	INFORMIX

180	The ----- is the administrative section of the computer system.	Memory Unit	Input Unit	Central Processing Unit	Control Unit
181	FPI stands for...	Faults per inch	Frames per inch	Film per inch	None of these
182	CD-ROM is a kind of...	Optical disk	Magnetic disk	Magneto-Optical disk	None of these
183	What is the number of bit patterns provided by a 7 bit code?	64	256	128	512
184	Compilers and Interpreters are themselves	High level language	Codes	Mnemonics	Programs
185	A language for simulating models of business activity is...	SPSS	GPSS	COBOL	DL
186	The word length of a computer is measured in...	bits	bytes	millimeters	metres
187	A device that converts digital signals to analog signals is...	A packet	A modem	A block	Both (A) and (B)
188	What is the primary requisite of a good computer programmer?	Mathematical mind	Artistic mind	Logical mind	Scientific knowledge
189	Find the odd man out.	FTP	POP	SAP	TCP
190	Coded entries which are used to gain access to a computer system are called...	Codewords	Entry codes	Exit codes	Security commands
191	VSNL stands for...	Videsh Sanchar Nigam Ltd	Very Soft Network Link	Vigam System Nigar Ltd	Very Small Network Link
192	The errors that can be pointed out by the compiler are...	Syntax errors	Internal errors	Semantic errors	Logical errors
193	Which one of the following when added can reduce the processing time of a computer?	a buffer	a co-processor	1024 megabyte	a converter
194	Pick the odd one out.	Microsoft	IBM	Novell	Windows
195	CD ROM is a/an...	Optical device	Magnetic device	Electro Magnetic Device	Mechanical Device
196	Find the odd one out.	Mouse	Keyboard	Printer	Touch screen
197	A terabyte comprises...	1024 gigabyte	1024 kilobyte	1024 megabyte	1024 byte
198	Full form of TCP is...	Transmission control program	Totalling control program	Transmission control protocol	Total control Protocol
199	Who is considered to be The Father of Artificial Intelligence?	Alan Turing	John McCarthy	George Boole	Allen Newell
200	Which of the following is an advantage to using fibre optics data transmission?	Resistance to data theft	Fast data transmission rate	Few transmission errors	Low noise level

Answers

101	O/s Shell
102	Fat+D171
103	ASCII
104	Scanner
105	Write Back
106	A Collection of programs that enables you .
107	ALU
108	Pass
109	it is not as tiring as keyboard input
110	WAVE
111	Config.sys
112	Mouse
113	Computer Software
114	Computer Literate
115	Both A&C
116	Pause
117	None of these
118	DVD
119	System Software
120	ROM
121	Folder
122	Printer
123	None of these
124	Mouse
125	Device Driver
126	None of these
127	Optical Fiber
128	M- Commerce
129	A/c Software
130	Extended Memory
131	Terminate And Stay Resident
132	Compact disk
133	NEC
134	Mouse
135	Seagate
136	Translate high level

	language to machine language.
137	Firmware
138	CPU
139	All of these
140	Used in Machine language
141	Sony
142	Smallest Resolution
143	Blinking Line
144	Taiwan
145	Print
146	CD-ROM
147	Sun
148	BELL Laboratories
149	Super computer
150	1000
151	Erase & reconstruct
152	Direct Memory Access
153	Digital Network Service
154	GELOPS
155	Analytical Engine
156	Gate
157	A third generation high level language
158	HTML
159	Error detection
160	Java
161	Mini computer
162	ROM
163	Ethernet
164	All of the above
165	Photoelectric cells
166	APPEND
167	Java
168	,

169	Bit Per Second
170	Windows Explorer
171	Modem
172	Gateway
173	Arpnet
174	Router
175	Hyper text transfer protocol
176	Network
177	Star wars
178	Integrated Service Digital Network
179	C
180	Central Processing Unit
181	Frames per inch
182	Magnetic disk
183	128
184	Programs
185	GPSS
186	bytes
187	A modem
188	Logical mind
189	POP
190	Security commands
191	Videsh Sanchar Nigam Ltd
192	Logical errors
193	a co-processor
194	Windows
195	Electro Magnetic Device
196	Printer
197	1024 gigabyte
198	Transmission control protocol
199	John McCarthy
200	Fast data transmission rate

Section-3

CLOUD COMPUTING



Cloud computing is the on-demand availability of computer system resources, especially data storage and computing power, without direct active management by the user. The term is generally used to describe data centers available to many users over the Internet

Section-3

Each Section has 100 Multiple Choice Questions (MCQ).
Each question has four choices. Student to Tick the correct answer.

Sr. No.	Question	A	B	C	D
201	Choose the odd out.	Digital computer	Super computer	Minicomputer	Micro computer
202	Pick the odd one out.	Microsoft	IBM	Novell	Windows
203	Which one of the following when added can reduce the processing time of a computer?	a buffer	a co-processor	1024 megabyte	a converter
204	Who is considered to be The Father of Artificial Intelligence?	Alan Turing	John McCarthy	George Boole	Allen Newell
205	Choose the odd out.	Digital computer	Super computer	Minicomputer	Micro computer
206	What is TTL?	Technical Talk Language	True Technology Lives	Transparent Transfer Layer	Time To Live
207	What does DOCSIS stand for?	Data Over Cable Service Interface Specification	Data Over Cable Security Internet Std	Data Over Cable Secure International Stds	Data Over Cable Service Internet Standard
208	What is LCP?	Link Control Protocol	Laggy Connection Problem	Local Connection Protocol	Lost Connection Problem
209	What is FMD?	FastEthernet Measuring Device	Flashing Media Diode	Flash Media Driver	Fluorescent Multi-Layer Disc
210	What is RISC?	Runtime Instruction Set Compiler	Remote Intranet Secured Connection	Remodeled Interface System Computer	Reduced Instruction Set Computer
211	What does SSL stand for?	Secure System Login	Secure Socket Layer	System Socket Layer	Superuser System Login

212	CD ROM is a/an...	Optical device	Magnetic device	Electro Magnetic Device	Mechanical Device
213	What is VCM?	Virtual Connection Manager	Voice Controlled Modem	Voice Communications Module	Virtual Channel Memory
214	Which of these is a documented hoax virus?	McDonalds screensaver	Adolph	Alien.worm	Merry Xmas
215	What is NAT?	Network Address Translation	Novell Address Transfer	Newly Added Technology	Network Administration Tool
216	What does PPTP stand for?	Point to Point Transfer Protocol	Point to Point Transmission Protocol	Point to Point Traffic Protocol	Point to Point Tunneling Protocol
217	A program that neither replicates or copies itself, but does damage or compromises the security of the computer. Which 'Computer Virus' it is?	Hoax	Trojan	Worm	Joke Program
218	What is a GPU?	Graphical Performance Utility	Grouped Processing Unit	Graphical Portable Unit	Graphics Processing Unit
219	What is a NIC?	No Internet Connection	Network Interface Card	Netware Intranet Controller	Network Interference Control
220	What does ICMP stand for?	Internet Connection Modem Protocol	Intranet Control Message Program	Internet Control Message Protocol	Internal Conflict Management Program
221	The main computer that stores the files that can be sent to computers that are networked together is...	Clip art	Peripheral	File server	Mother board
222	To select text by shading as you drag the mouse arrow over the text is known as...	To fetch	To highlight	To decode	Clip art

223	In 1983, which person was the first to offer a definition of the term 'computer virus'?	Norton	Smith	Cohen	McAfee
224	What does ECP stand for?	Extra Compatible Part	Extended Capabilities Port	Extended Connection Port	External Cordless Peripheral
225	A computer virus that actively attacks an anti-virus program or programs in an effort to prevent detection is...	Trojan	Worm	Retrovirus	Ghost virus
226	What is a MAC?	Mediocre Apple Computer	Media Access Control	Memory Address Corruption	A Computer made by Apple
227	Which of the following operating systems is produced by IBM?	UNIX	DOS	Windows	OS-2
228	RAM stands for...	Really Annoying Machine	Random Access Memory	Real Absolute Memory	Read A Manual
229	Which was an early mainframe computer?	UNIC	FUNTRIA	ENIAC	BRAINIA
230	This virus activated every Friday the 13th, affects both .EXE and .COM files and deletes any programs run on that day. What is the name of that virus?	Jerusalem	Melissa	I Love You	Chernobyl
231	Which of the following word processors came first?	MS Word	WordPerfect	Lotus Notes	WordStar
232	The invention of the transistor, or semiconductor, was one of the most important developments leading to the personal computer revolution. What company invented the transistor in 1947?	international business machines	Xerox	MITS	Bell Laboratories
233	Which Intel chip was the first to support a32-bit bus architecture?	286	486SI	Pentium	386DX
234	Which company created the most used networking software in the 1980's	Microsoft	Sun	Novell	IBM
235	What was the clock speed of the original IBM PC?	Less than 5 MHz	Just over 16 MHz	8 MHz	10 MHz

236	Which of the following is not a programming language?	Turing	Basic	C#	Java
237	Another word for the CPU is...	Decode	Microprocessor	Execute	Micro chip
238	On what date was the debut of the first IBM Personal Computer?	28876	29454	29963	29810
239	How many bits is a byte?	32	16	4	8
240	Which of these is not a computer?	Macintosh	Aptiva	Acorn	Paseo
241	Which of the following is NOT a type of expansion slot or bus design used in Advanced-Technology class systems?	ISA	PROM	PCMCIA	EISA
242	'DB' computer abbreviation usually means?	Driver Boot	Data Block	Double Byte	Database
243	Experts say the healthiest way to view a computer monitor is by...	Using special glasses that filter out UV rays	Placing it 18 to 30 inches away from your eyes	Adjusting the screen for maximum contrast	Viewing from a darkened room
244	Changing computer language of 1's and 0's to characters that a person can understand is...	Decode	Highlight	Execute	Clip art
245	In what year did the Symantec Corporation first release Norton Antivirus?	1997	1990	1995	1988
246	The Central Processing Unit is an embeded chip that acts as the 'brains' of a computer. What Intel chip was used in the Altair (the first real personal computer)?	6502	6400	8286	8080
247	What do we call a network whose elements may be separated by some distance? It usually involves two or more small networks and dedicated high-speed telephone lines.	WAN (Wide Area Network)	World Wide Web	URL (Universal Resource Locator)	LAN (Local Area Network)
248	'DTP' computer abbreviation usually means?	Data Type Programming	Document Type Processing	Digital Transmission Protocol	Desktop Publishing

249	What is the term to ask the computer to put information in order numerically or alphabetically?	Crop	Sort	Report	Record
250	The letters, "DOS" stand for...	Data Operating System	Data Out System	Disk Operating System	Disk Out System
251	Windows Vista, the eventual replacement for Windows XP, will demand more from a computer. Which of the following statements is correct?	A DVD drive is needed	A separate graphics card, rather	You'll need at least 512 megabytes of RAM	All the above
252	Who built the world's first binary digit computer: Z1...?	George Boole	Ken Thompson	Konrad Zuse	Alan Turing
253	Floppy Disk is the _____ type of memory.	Magnetic & Secondary	Primary	Secondary	None of these
254	How much bytes equal to the 1024 KB?	1024	1024 * 1024	8	1
255	All important data files are stored in...	Ram	Sram	Rom	Hard disk
256	'OS' computer abbreviation usually means?	Operating System	Optical Sensor	Order of Significance	Open Software
257	Your computer has gradually slowed down. What's the most likely cause?	Your processor chip is just getting old	You dropped a sandwich in your computer	Adware/spyware is infecting your PC	Overheating
258	A dual-layer DVD is valued because it:	Can hold more data	Contains a backup of the data stored	Creates alternative sound tracks	Uses a second layer to offer a speed increase
259	Mouse is the _____ type of the device.	Output	Pointing	Scanning	None of these
260	Which of the following is input device?	Scanner	Speaker	Printer	Plotter
261	ENIC stands for...	Electronic New Interchan	Electric Numerable	Electronic Numeric Integrator	Electronic Numerical Integrator

		ge and Calculate	Integrated and Calculus	and Calculator	and Computer
262	The letter's characters typed from keyboard can normally be seen on the	VDU	CPU	MOUSE	PRINTER
263	Computer is a system which includes...	CPU, Input devices, Monitor	Mainframe computer	Super computer	None of these
264	The capacity of 5.25 Floppy Disk is...	1.44MB	1.8MB	1.2MB	1.6MB
265	_____ isn't the primary memory.	EPROM	ROM	CDROM	RAM
266	The first calculating device is _____	Super Computer	Digital Computer	Abacus	None of these
267	Personal Computers are the type of computers.	Super computer	Mainframe computer	Mini computer	Micro computer
268	PC stands for...	Private Computer	Physical Computer	Personal computer	Personal Card
269	Computers used in house, business establishments & on the desktop of offices are called...	Personal computer	Mainframe computer	Super computer	None of these
270	The size of file is measured in...	Bite	Bit	Byte	None of these
271	_____ is a volatile memory.	Hard disk	ROM	RAM	EPROM
272	_____ is not logic gate.	NEC	AND	OR	NOT
273	Which of the following is the high speed printer?	Line printer	Inkjet printer	Laser Printer	Dot Matrix printer
274	Which is the first electronic computer of the world?	Niac-1	ENIAC	Micro frame	None of these
275	Super Computer is still in _____ generation.	Second	First	Fourth	Third
276	Which electronic device was used in Second Generation Computers?	Vacuum Tubes	VLSI	Transistor	None of these
277	_____ computer works on digital principle.	Hybrid	Analog	Digital	None of these

278	The MICR device uses a special type of font called...	Times	Helv	Arial	E13B
279	Which of the following is not a basic component of PC?	Monitor	Scanner	CPU	Keyboard
280	OCR reads only the ____ types of font.	Cursive writing	OCR	Hand written matter	None of these
281	The development period of Second Generation Computer is...	1965-1975	1967-1985	1955-1965	1945-1955
282	The input devices are connected to CPU by using...	Output port	Input port	Com port	None of these
283	In third Generation Computers..... is used.	LSI	Transistor	IC	EC
284	The Hybrid Computer works as a...	Digital Computer	Analog Computer	Both A & B	None of these
285	The development period of First Generation Computers is...	1945-1954	1987-1997	1967-1977	1946-1957
286	All arithmetic and logical processing done in ____	ALU	CU	MU	CPU
287	The computer that works on analogous way is called...	Hybrid computer	Digital Computer	Analog Computer	None of these
288	To move the cursor one screen up is called...	Home	Tab	Page up	End
289	A computer with the facilities of sound and video is called....	Movie media	Micro media	Multimedia	None of these
290	The software designed for accounting is...	Operating System	Application Software	System software	Hardware
291	Which is the interface between hardware and software?	Operating System	Application Software	System Software	Hardware
292	Which unit generates the timing signals for the execution of commands?	MU	CPU	MP	CU
293	Computer used for special effects in movies is....	Mainframe computer	Super computer	Micro computer	Macro computer
294	The printers that use impression technique for their printing is called...	Spray Printer	Nonimpact Printer	Laser printer	Impact Printer

295	In First Generation Computer _____ was used.	Vacum tube	IC	EC	Transistor
296	In keyboard, function of which keys are changed according to the software?	Function keys	Alphabetical keys	Arrow keys	Numeric Keys
297	Floppy disk and Hard disk are...	Software	Storage Device	Operating system	Types of scanner
298	The speed of CPU is measured in....	Bytes	Bit	Hz	Sec
299	To move cursor with five spaces in one keystroke which key is used?	Shift	Ctrl	Alt	Tab
300	To move the cursor to the end of line, which key is used?	Home	Page down	End	Page up

Answers

201	Digital computer
202	Windows
203	a co-processor
204	John McCarthy
205	Digital computer
206	Time To Live
207	Data Over Cable Service Interface Specification
208	Link Control Protocol
209	Fluorescent Multi-Layer Disc
210	Reduced Instruction Set Computer
211	Secure Socket Layer
212	Electro Magnetic Device
213	Virtual Channel Memory
214	McDonalds screensaver
215	Network Address Translation
216	Point to Point Tunneling Protocol
217	Trojan
218	Graphics Processing Unit
219	Network Interface Card
220	Internet Control Message Protocol
221	File server
222	To highlight
223	Cohen
224	Extended Capabilities Port
225	Retrovirus
226	Media Access Control
227	OS-2

228	Random Access Memory
229	ENIAC
230	Jerusalem
231	WordStar
232	Bell Laboratories
233	386DX
234	Novell
235	Less than 5 MHz
236	Turing
237	Microprocessor
238	29810
239	8
240	Paseo
241	PROM
242	Database
243	Placing it 18 to 30 inches away from your eyes
244	Decode
245	1990
246	8080
247	WAN (Wide Area Network)
248	Desktop Publishing
249	Sort
250	Disk Operating System
251	All the above
252	Konrad Zuse
253	None of these
254	1024 * 1024
255	Hard disk
256	Operating System Adware/spyware is infecting your PC
257	Can hold more data
258	Pointing
259	Scanner
260	Electronic Numerical

	Integrator and Computer
262	VDU
263	None of these
264	1.2MB
265	CDROM
266	Abacus
267	Micro computer
268	Personal computer
269	Personal computer
270	Byte
271	RAM
272	NEC
273	Laser Printer
274	ENIAC
275	Fourth
276	Transistor
277	Digital
278	E13B
279	Scanner
280	OCR
281	1955-1965
282	Input port
283	IC
284	Both A & B
285	1945-1954
286	ALU
287	Analog computer
288	Page up
289	Multimedia
290	Application Software
291	Operating System
292	CU
293	Mainframe computer
294	Impact Printer
295	Vacum tube
296	Function keys
297	Storage Device
298	Hz
299	Tab
300	End

Section-4

CYBER SECURITY



Computer security, cybersecurity or information technology security is the protection of computer systems and networks from information disclosure, theft of or damage to their hardware, software, or electronic data, as well as from the disruption or misdirection of the services they provide

Section-4

Each Section has 100 Multiple Choice Questions (MCQ).
Each question has four choices. Student to Tick the correct answer.

Sr. No.	Question	A	B	C	D
301	A set of program designed to perform some specific task is called...	Software	Hardware	Program	None of these
302	The touchable part of computer is called...	Program	Hardware	Software	None of these
303	If Num Lock key is off, the keys of numeric key pad act as...	Cursor key	Numbers only	Function keys	None of these
304	On numeric key pad _____ keys are available.	0 to 9 numbers	Arrow keys	characters	All of these
305	Which of the following is programmable ROM?	PROM	EPROM	EEPROM	All of these
306	If Num Lock is on, the keys of numeric pad act as...	Arrow only	Character only	Numbers only	None of these
307	If floppy disk is write protected then we can...	Only write the data	Floppy will not access	Only read the data	None of these
308	Serial mouse is connected to	Com 1	Com 1	Come 2	Serial Port
309	If Caps Lock key is on, then.....	Capital letters print	Small letters print	The lowercase letters print	None of these
310	_____ is used to translate scanned image into text for edition.	SCR	SCSI	OCR	USC
311	If Caps Lock key is on and any character key is pressed in combination with shift key then...	Capital letters print	Small letters print	Lowercase letters print	Both B & C
312	To move the cursor to the beginning of the line, which key is used?	Home	End	Page up	Delete
313	The quality of impact printer is decided by	PPI	DPI	SSP	MPI
314	The CPU access each location in memory by using unique number called...	Memory address	Data address	Data bus	None of these
315	Which of the following Dot Matrix printer is high quality printer?	12 pin	24 pin	18 pin	10 pin

316	In CPU's instruction set, each instruction is expressed in	Microcode	Minicode	Operand	Instruction
317	To draw the architectural drawings and graphics, which of the following is used?	Scanner	Printer	PDA	Plotter
318	The circuit board to which microprocessor attached is known as...	CPU	Keyboard	Motherboard	Monitor
319	Virus is...	A program	A device	An error	None of these
320 Computer is fastest computer system.	Mainframe	Super	Mini	Micro
321	To use numerical key pad on keyboard, you must turn on....	Caps Lock	Num Lock	Scroll Lock	None of these
322	SMPS stands for	Simple Mode Power Supply	Single Mode Power Supply	Switch Mode Power Supply	None of these
323	Website allows users to search data on keywords.	Net engine	Search engine	Web browser	None of these
324	Buying and selling on internet is known as...	E-business	E-buzz	E-commerce	None of these
325	The acronym 'PPP' stands for	Print Point Protocol	Point To Point Past	Point To Point Prompt	Point to point Protocol
326	GUI stands for	Graphic User Integrated	Graphic User Intership	Graphic User Interface	None of these
327	SLIP stands for	Serial Line Internet Protocol	Serial Line Internet Point	Serial Line Inter Protocol	Serial LAN Internet Protocol
328	MIME means	Multi Inner Mail Extension	Multipurpose Internet Mail Extension	Multiuse Inner Mail Extension	None of these
329	A computer in network which serve only network resources is known as.....	Node	Client	Server	None of these

330	Sending messages on internet is called.....	E-patra	E-mail	message	SMS
331	UPT & STP are terms related to	Networks	Twisted pair cable	Type of protocol	None of these.
332	VSNL stands for...	Videsh Sanchar Nigam Ltd.	Videsh Sanchar Nike Ltd.	Vishwa sanchar Nigam Ltd	None of these
333	Web document is stored as text file with extension....	.HTML	.HTM	both A & B	None of these
334	The first page displayed when user first visit site is called.....	First page	Home page	Front page	None of these
335	To view web pages you need....	www	TCP/IP	Browser	None of these
336	To transmit information in form of light pulsesmedia is used.	Coaxical cable	Fiber optic	Twisted pair	Satellite
337	The first ISP in India is	MTNL	VSNL	BSNL	Arpanet
338	Each component in network is called	Node	Domain	Terminal	Compter
339	Internet is.....	Collectin g	Software	Network	Format
340	A process know as ____ is used by large retailers to study trends.	Data mining	POS	Data selection	Data conversion
341	The ability to recover and read deleted or damaged files from a criminal computer is an example of a law enforcement specialty called.	Robotics	Computer Forensic	Simulation	Animation
342	After a picture has been taken with a digital camera and processed appropriately, the actual print of the picture is considered :	Data	input	Output	the process
343	Computers use the Language to process data.	Processi ng	binary	Kilobyte	representatio n
344	The CPU and memory are located on the :	Expansio n board	storage device	Motherbo ard	output device
345	A is approximately a million bytes.	Gigabyte	megabyte	Kilobyte	terabyte
346	A is approximately one billion bytes.	Kilobyte	Gigabyte	Bit	megabyte

347	Poor Response times is usually caused by.....	Process Busy	High Paging rates	High I/O	All of these
348	All hardware setting can be done using	Task bar	Edit	File	Control Panel
349	Which of the following menu is used to create new folder in Windows Explorer?	Edit	File	Help	Tools
350	In Paintbrush of Windows XP F1 IS used for	Word	Windows	File	Help
351	In Windows you can search files	By date of creation	By name	Type text	File
352	Files disappeared from the hard disk due to power failure can be received using...	Disk defragmenter	System auditor	Chkdsk	Scandisk
353	The disk defragmenter is used to	Arrange files alphabetical order	know the capacity of the unused disk	Know the capacity of the unused disk	None of these
354	The CD-ROM drive is used to	To install software	The control digital information	To play music	To play compact disk
355	How can you change the size of the recycle bin?	Right click on Recycle bin select setting	Right click on Recycle bin select properties	Right click on Recycle bin select change size	Double click on Recycle bin, select properties
356	You hard disk access speed gradually degraded, which of the following utility helps to detect the fault?	System monitor	Scandisk	Disk defragmenter	None of these
357	You can change screen saver settings using	Control Panel Dialog Box	Setting Dialog Box	Display Properties	Print Manager Dialog Box
358	Ctrl + F4 is used to ...	Close application	Close an active document window	Both A & B	None of these

359	Using File Manager, we can see information of drivers at a time.	Four	Two	One	Three
360	The Microsoft Corporation is an	Russian company	American company	Germany company	Indian company
361	A file name in office 97 can have maximum of ... characters.	16	256	32	11
362	The calculator is present in two different modes & modes are	Standard mode	Scientific mode	Both A & B	None of this
363	How many bits is a byte?	4	8	16	30
364	http://www.indiabix.com - is an example of what?	A URL	An access code	A directory	A server
365	Changing computer language of 1's and 0's to characters that a person can understand is...	Highlight	Clip art	Decode	Execute
366	The input used by an antenna or cable to a TV set uses frequencies called...?	IF	RF	AF	SAP
367	What is the term to ask the computer to put information in order numerically or alphabetically?	Crop	Record	Report	Sort
368	.BAT' extension refers usually to what kind of file?	Compressed Archive file	System file	Audio file	Backup file
369	Where is the headquarters of Intel located?	Redmond , Washington	Tucson, Arizona	Richmond , Virginia	Santa Clara, California
370	'BAK' extension refers usually to what kind of file?	Backup file	Audio file	Animation /movie file	MS Encarta document
371	'DTP' computer abbreviation usually means ?	Digital Transmission Protocol	DeskTop Publishing	Data Type Programming	Document Type Processing
372	Compact discs, (according to the original CD specifications) hold how many minutes of music?	74 mins	56 mins	60 mins	90 mins
373	Who built the world's first binary digit computer: Z1...?	Konrad Zuse	Ken Thompson	Alan Turing	George Boole

374	"FET" is a type of transistor, Its full name is _____ Effect Transistor...?	Field	Flash	Factor	Force
375	'.TXT' extension refers usually to what kind of file?	Text File	Image file	Audio file	Adobe Acrobat file
376	In what year was the "@" chosen for its use in e-mail addresses?	1976	1980	1972	1984
377	What do we call a collection of two or more computers that are located within a limited distance of each other and that are connected to each other directly or indirectly?	Internet	Interanet	Local Area Network	Wide Area Network
378	The language which is understood by computer is ---	American Language	Machine language	Secret Language	None of this
379	Computer Language JAVA developed by----	Sun Micro System	Microsoft	IBM	Infosystem
380	Mostly computer can understand----	English like high level instruction	any Language	Basic	Non of this
381	_____ is applicable in all computer	Cobol language	Machine language	Basic language	Fortan
382	_____ is a set of symbols, keywords and set of rules to construct statement	Computer programme	programming language	Assemble	Syntax
383	Computer language used on the internet is _____	Cobol language	Java	Pascal	None of this
384	A prescribed set of well defined instructions for solving mathematical problems is called _____	A compiler	A description	A code	A algorithm
385	which of the following is a popular programming language for developing multimedia web pages..	Cobol	JAVA	BASIC	Assembler
386	A _____ contains specific rules and words that express the logic steps of an algorithm.	Logic Chart	syntax	programming structure	programming language

387	A graphic presentation of the sequence of steps needed to solve a programming problem is called a _____	program flowchart	step chart	rule diagram	program graph
388	The operating system called UNIX is typically used for _____	desktop computers	laptop computers	super computers	web server
389	C, BASIC, COBOL, and Java are examples of _____ language.	low level	computer	High level	None of this
390	A set of rules for telling the computer what operations to perform is called a _____	Command language	Natural language	Programming language	procedural language
391	A mistake in an algorithm that causes incorrect results is called a _____	Logical error	syntax error	Procedural error	Compiler error
392	To calculate perform calculation and store data computer user _____	Decimal	Hexadecimal	Octal	Binary
393	The largest unit of storage is _____	GB	KB	MB	TB
394	The time bit is short for _____	Megabyte	Binary language	Binary digit	Binary number
395	Which of the following is true?	Byte is a simple digit in binary number.	Bit represents a group of digital numbers.	Byte is an eight digit binary number.	Bit is an eight digit binary number.
396	How many choices are there in binary choice?	One	Two	It depends upon the amount of memory in a computer	None of these
397	The smallest unit of computer memory is called _____	Bit	bytes	Megabyte	None of these
398	Which of the following is used for memory measurement?	Lb	Mg	Tb	GHs
399	What are the two digits of binary system?	1 and 9	1 and 0	1 and 4	1 and 2
400	The method to store characters and symbols in bytes is called _____	Number system	Alpha system	Byte system	coding system

Answers

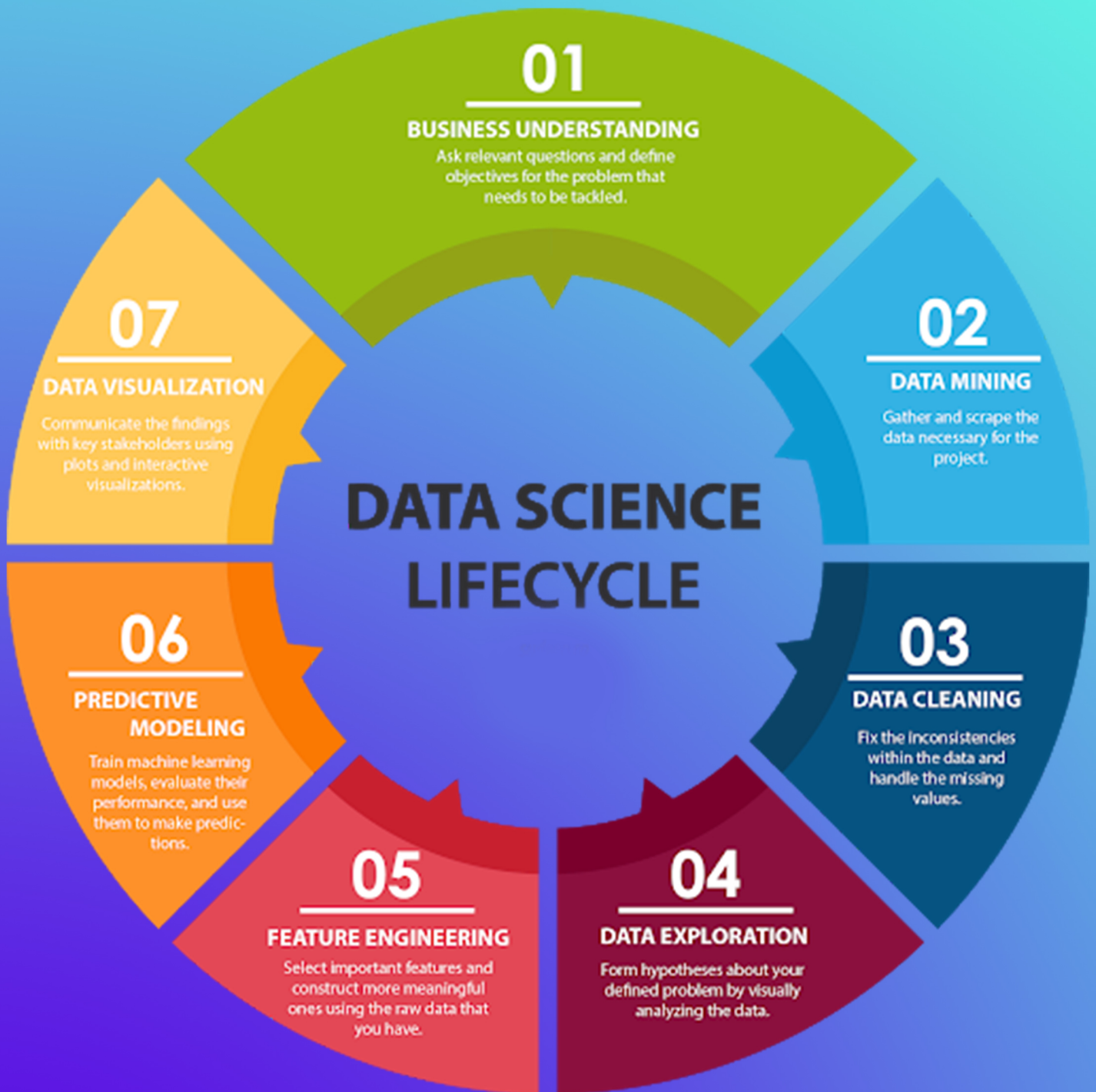
301	Software
302	Hardware
303	Cursor key
304	All of these
305	All of these
306	None of these
307	Only read the data
308	Serial Port
309	Capital letters print
310	OCR
311	Both B & C
312	Home
313	DPI
314	Memory address
315	24 pin
316	Operand
317	Plotter
318	Motherboard
319	A program
320	Super
321	Num Lock
322	Switch Mode Power Supply
323	Search engine
324	E-commerce
325	Point to point Protocol
326	Graphic User Interface
327	Serial Line Internet Protocol
328	Multipurpose Internet Mail Extension
329	Server
330	E-mail
331	Type of protocol
332	Videsh Sanchar Nigam Ltd.
333	both A & B
334	Front page
335	Browser

336	Twisted pair
337	VSNL
338	Node
339	Software
340	Data mining
341	Computer Forensic
342	Output
343	binary
344	Motherboard
345	megabyte
346	Gigabyte
347	High I/O
348	Control Panel
349	Help
350	Help
351	By date of creation
352	Scandisk
353	Know the capacity of the unused disk
354	To play compact disk
355	Right click on Recycle bin select properties
356	Disk defragmenter
357	Display Properties
358	Close an active document window
359	One
360	American company
361	256
362	Both A & B
363	8
364	A URL
365	Decode
366	RF
367	Sort
368	System file

369	Santa Clara, California
370	Backup file
371	DeskTop Publishing
372	74 mins
373	Konrad Zuse
374	Field
375	Text File
376	1972
377	Local Area Network
378	Machine language
379	Sun Micro System
380	English like high level instruction
381	Machine language
382	Syntax
383	Java
384	A algorithm
385	JAVA
386	syntax
387	program flowchart
388	web server
389	High level
390	Programming language
391	Logical error
392	Binary
393	TB
394	Binary digit
395	Byte is an eight digit binary number.
396	Two
397	Bit
398	Lb
399	1 and 0
400	coding system

Section-5

DATA SCIENCE



Data science is an interdisciplinary field that uses scientific methods, processes, algorithms and systems to extract knowledge and insights from structured and unstructured data, and apply knowledge and actionable insights from data across a broad range of application domains.

Section-5

Each Section has 100 Multiple Choice Questions (MCQ).
Each question has four choices. Student to Tick the correct answer..

Sr. No.	Question	A	B	C	D
401	Series of eight bits is called ____	Bit	Byte	Kilobyte	None of these
402	_____ shows 'off' state of current in binary code.	1	0	3	2
403	The length of any word in a computer is measured in ____	Bits	Meter	Bytes	None of these
404	1001, Series of four bits is called _____	Bytes	Nibble	Bit	Input
405	What is logic gate?	A software	A type of Circuit	A special Cd	A computer game
406	_____ measures in megabytes.	Intensity of earthquake	Capacity of power	Memory capacity of computers	None of these
407	One Kilobyte is equivalent to ____	1000 Bytes	1024 Bytes	10000 Bytes	100000Bytes
408	The ____ indicates how much data a particular storage medium can hold.	replace	Capacity	memory	torage
409	Information on a computer is stored as _____	analog data	digital data	modem data	watts data
410	Which of the following is the second largest measurement of RAM?	Terabyte	Megabyte	Byte	Gigabyte
411	The computer abbreviation KB usually means ____	Key Block	Kernal Boot	Kilo Byte	Kit Bit
412	What is a keyboard used for?	Input text and numbers and send commands to the computer	To create new keys to use with your computer	To open the computer up	To create picture and images and send them to your computer
413	What are the speakers attached to your computer used for?	Displaying image	Sending messages	Storing messages	Handling sound and music

414	The mouse_____ usually appears in the shape of an arrow.	Indicator	Marker	meter	Pointer
415	The most common storage device for the personal computer is the_____	Floppy disk	USB thumb drive	Zip disk	Harddisk drive
416	Which of the following could be digital input devices for computer	Digital camcorder	Microphone	Scanner	All of the above
417	If you open a menu and then decide you don't want to select an option after all, click the menu title again or press the___ key to close the menu.	Input automation	Item data Automation	Scanning automation	Source data automation
418	A key that will erase information from the computer's memory and characters on the screen___	edit	dummy out	trust key	delete key
419	A _____is often used to select or highlight.	icon	keyboard	Hard disk	mouse
420	The most frequently used piece of hardware for input data is the _____	keyboard	floppy disk	cursor	software
421	The _____may also be called the screen or monitor	printer	scanner	harddisk	display
422	An attempt to make a computer resource unavailable to its intended users is called	denial-of-service attack	virus attack	worms attack	botnet process
423	WPA2 is used for security in..	ethernet	bluetooth	wi-fi	none of these
424	Network layer firewall has two sub-categories as	stateful firewall and stateless firewall	bit oriented firewall and byte oriented firewall	frame firewall and packet firewall	none of the mentioned
425	Network layer firewall works as a...	frame filter	packet filter	both (a) and (b)	none of the mentioned
426	Extensible authentication protocol is authentication framework frequently used in...	wired personal area network	wireless networks	wired local area network	none of the mentioned
427	When a DNS server accepts and uses incorrect information from a host that has no authority giving that information, then it is called...	DNS lookup	DNS hijacking	DNS spoofing	none of the mentioned

428	In computer security, means that computer system assets can be modified only by authorized parities.	Confident ialiity	Integrity	Availabilit y	Authenticity
429	In computer security, means that the information in a computer system only be accessible for reading by authorized parities.	Confident ialiity	Integrity	Availabilit y	Authenticity
430	Which of the following is independent malicious program that need not any host program?	Trap doors	Trojan horse	Virus	Worm
431	The is code that recognizes some special sequence of input or is triggered by being run from a certain user ID of by unlikely sequence of events.	Trap doors	Trojan horse	Logic Bomb	Virus
432	Which of the following malicious program do not replicate automatically?	Trojan Horse	Virus	Worm	Zombie
433	A is a program that can infect other programs by modifying them, the modification includes a copy of the virus program, which can go on to infect other programs.	Worm	Virus	Zombie	Trap doors
434	Which of the following is/are the main part(s) of basic cellular system.	A mobile Unit	A cell Site	A mobile Telephone Switching Office	All of the above
435	Fading of the received radio signals in a mobile communication environment occurs because of	Direct propagation	Multipath Propagation	Bi-path Propagation	None of the above
436	State whether True or False. i) The cells or subdivisions of a geographical area are always hexagonal. ii) A land to Mobile call originates through the Telephone exchange.	True, False	False, True	False, False	True, True
437	The basic GSM is based on _____ traffic channels.	connectio n oriented.	connection less.	packet switching .	circuit switching.

438	In multiple access is achieved by allocating different time slots for the different users.	TDMA	CDMA	FDMA	FGMA
439	State whether True or False. i) In GSM only TDMA is used. ii) There is zero inter-channel interference in CDMA.	True, False	False, True	False, False	True, True
440 are typically characterized by very small cells, especially in densely populated areas.	2G system.	3G system.	2.5G system.	3.5G system.
441	A antenna which attempts to direct all its energy in a particular direction is called as a	Directional Antenna	One to One Antenna	Propagation Antenna	Single Direction Antenna
442	Which mode is used for installing networks in wireless communication device characteristics?	Fixed and wired.	Mobile and wired.	Fixed and wireless.	Mobile and wireless.
443 is not the component of data structure.	Operations	Storage Structures	Algorithms	None of above
444	Memory unit that communicates directly with the CPU is called the	Main memory	Secondary memory	Auxiliary memory	Register
445	CISC stands for	Common Instruction Set Computers	Complex Instruction Set Compilers	Complex Instruction Set Computers	Compound Instruction Set Computers
446	The communication between central system and the outside environment is done by	Input-output subsystem	Control system	Memory system	Logic system
447	A collection of lines that connects several devices is called	bus	peripheral connection wires	Both a and b	internal wires
448	Bluetooth is an example of	personal area network	local area network	virtual private network	none of these
449	A _____ is a device that forwards packets between networks by processing the routing information included in the packet.	bridge	firewall	router	all of the mentioned

450	The first Computer mouse was built by...	Douglas Engelbart	Oaniel Coogher	William English	Robert Zawacki
451	Which of the following software could assist someone who can not use their hands for computer input?	Video conferencing	Speech recognition	Audio digitizer	synthesizer
452	In EPROM cycles allowed.	1000	100	10	1
453	Pixel stands for	File format	Smallest Resolution	Program	None of these
454 designs floppy disk drivers.	Nokia	Intel	Sony	None of these
455	DMA means	Direct Memory Active	Direct Memory Access	Direct Method Access	None of these
456 relates with scanner.	TAIWAN	Media	Mouse	Mercury
457 is not logic gate.	NEC	AND	OR	NOT
458 cables can transmit data at high speeds.	UTP	Coaxial	Optical Fiber	Simple
459	If you will add any hardware, which of the following program you need?	Driver	Device Driver	Application Software	None of these
460	In system, buffers are placed in	Autoexec .bat	Config.sys	Both 1 & 2	None of these
461	Common extension of sound file is	WAVE	DAT	MIDI	None of these
462	The double sided and double density 5.25"flopy disk can storeof data	1.44MB	1.22MB	1.2KB	1.2 MB
463	Who invented the super computer?	PT Fransworth	Charles Ginsberg	JH Van Tassell	None of these
464	How many types of memory dose a computer have ?	Four	Eight	One	Two
465	The part of computer in which data and programs are stroed is called..	Memory	Software	Hardware	Processor
466	The storage devaice of computer is-	ALU	Control	RAM	Mouse

467	Main memory of computer is-	Internal	External	A and B both	Auxillary
468	Floppy discs is-	Internal	External	Volatile	A and B both
469	The contents of memory will not be lost, when the power goes off in.....	ROM	EPROM	EEPROM	All the above
470	Which one is random access memory-	RAM	ROM	EPROM	All of these
471	What is the permanent memory built into your computer called ?	RAM	ROM	P-ROM	All the above
472	When you save to this, Your data will remain intact even when the computer is turned off--	P-ROM	Motherboard	secondary storage device	Primary storage device
473	With a CD you can	read	write	read and write	either read or write
474	For permanent memory in computer objects used are--	Floppy disc	Magnetic tape	Optical disk	All of these
475	RAM is amemory--	External	Internal	main	Both (A) and (B)
476	What is the capacity of super computer floppy disc?	400 M	500 M	700M	None of these
477	Hard disc drives are consideredstorage--	flash	Non-volatile	Temporary	Non-permanent
478	Built in memory of computer is	RAM	ROM	EPROM	PROM
479	Flash is	software	Hardware	ROM	RAM
480	IN the following which is not ram ?	flash	P-RAM	D-RAM	S-RAM
481	Internal storage isstorage	primary	secondary	virtual	none of these
482	in computer dictionary letters CD are used for--	compress data	compress disc	computerised disk	computerised data
483	In which memory is data lost by power off ?	disc	floppy	CD	RAM
484	CD is an.....memory-	internal	external	auxiliary	a and b both
485is not a type of RAM--	megabyte	64 megabyte	32 megabyte	574 megabyte

486	ROM is used--	To read compact disc	To listen to music	To central digital information	none of these
487	which computer memory is used for storing programs and data currently being processed by the CPU ?	mass memory	internal memory	PROM	none of these
488	unit of storage capacity--	Byte	Bit	Cubic meter	Bug
489	firmware we understand.....	physical equipment used in a computer system	A set of instructions that cause a computer to perform one or more tasks	the people involved in the computing process	A set of programs that are pre-installed into the read only memory of a computer during the time of manufacturing
490	Computer hardware which stores large volume data is called--	Magnetic tape	disc	a and b both	none of these
491	The word 'memory' is related to...	logic	control	input	storage
492	The content ofare lost when the computer is turned off,	storage	memory	input	output
493	The most common type of storage device are--	persistent	optical	Magnetic	Flash
494	A disk's content that is recorded at the time of manufacture and that cannot be changed or erased by the user is-	memory only	Run only	Write only	Read only
495	Any data or instructions natured into memory of a computer is considered as.....	storage	output	input	information
496	CDs are of which shape ?	Square	Rectangular	Round	None of these
497	The instructions for starting the computer are housed in--	RAM	CD-ROM	ROM chip	All of these
498	Where is data saved permanently ?	memory	storage	CPU	Printer
499	A(n).....user laser technology to store large amount of information --	Floppy disc	CD-ROM	hard disc	ED-ROM

500	RAM isand	volatile, temporary	Nonvolatile permanent	nonvolatile, temporary	None of these
-----	-----------------------	---------------------	-----------------------	------------------------	---------------

Answers

401	Byte
402	0
403	Bits
404	Nibble
405	A type of Circuit
406	Memory capacity of computers
407	1024 Bytes
408	Capacity
409	digital data
410	Gigabyte
411	Kilo Byte
412	Input text and numbers and send commands to the computer
413	Handling sound and music
414	Pointer
415	Floppy disk
416	All of the above
417	Source data automation
418	delete key
419	mouse
420	keyboard
421	display
422	denial-of-service attack
423	wi-fi
424	stateful firewall and stateless firewall
425	packet filter
426	wireless networks
427	DNS spoofing
428	Integrity
429	Confidentiality
430	Worm
431	Trap doors
432	Trojan Horse
433	Virus

434	All of the above
435	Multipath Propagation
436	False, True
437	connection oriented.
438	TDMA
439	False, False
440	2.5G system.
441	Directional Antenna
442	Fixed and wired.
443	None of above
444	Main memory
445	Complex Instruction Set Computers
446	Input-output subsystem
447	bus
448	personal area network
449	router
450	Douglas Engelbart
451	Speech recognition
452	1000
453	Smallest Resolution
454	Sony
455	Direct Memory Access
456	TAIWAN
457	NEC
458	Optical Fiber
459	Device Driver
460	Config.sys
461	WAVE
462	1.2 MB
463	JH Van Tassell
464	Two
465	Memory
466	Ram

467	Internal
468	External
469	All the above
470	RAM
471	ROM
472	secondary storage device
473	read
474	All of these
475	main
476	500 M
477	Non-volatile
478	ROM
479	RAM
480	P-RAM
481	primary
482	compact disc
483	RAM
484	auxiliary
485	574 megabyte
486	To read compact disc
487	internal memory
488	Byte
489	A set of programs that is pre-installed into the read only memory of a computer during the time of manufacturing
490	a and b both
491	storage
492	memory
493	Magnetic
494	Read only
495	storage
496	Rectangular
497	ROM chip
498	storage
499	CD-ROM
500	volatile, temporary

Section-6

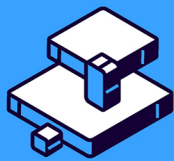
Enterprise

E



R

Resource



Planning

P



Enterprise resource planning is the integrated management of main business processes, often in real time and mediated by software and technology.

Section-6

Each Section has 100 Multiple Choice Questions (MCQ).
Each question has four choices. Student to Tick the correct answer.

Sr. No.	Question	A	B	C	D
501	CD ROM disc.....	has more storage capacity than a CD-R	hold less data than a floppy disk	cannot be erased and rewritten	can be written only once
502	How is it possible that both programs and data can be stored on the same floppy disk ?	A floppy disk has two sides, one for data and one for programs	programs and data are both software, and both can be stored of any memory device	A floppy disk has to be formatted for one or for the other	Floppy disks can only store data, not programs
503	Secondary storage.....	does not require constant power	does not use magnetic media	consist of for main types of devices	None of these
504	The place where the computer stores programs and data is called--	memory	storehouse	Storage unit	Backup
505	During processing data, programs and processed information are held temporarily in....	Secondary storage	ROM	RAM	CPU
506	A flat metallic disk that contains a large amount of permanently stored information read optically is called a.....	Monitor	ALU	CD-ROM	RAM
507	which type of memory holds only the program and data that the CPU is presently processing ?	CMOS	ROM	RAM	ASCII
508	what characteristic of read-only memory (ROM) makes it useful ?	ROM information can be easily updated	Data in ROM is nonvolatile, that is it remains there even without electrical power	ROM provides very large amounts of inexpensive data brands of	None of these

				computer s	
509	To put information in a file on a magnetic disk, or in a computer's memory, so that it can be used later.....	Store	Ship	Shift	Center
510	A place in the computer system where data and programs are temporarily stored	paste	Open	Memory	pocket
511	A removable magnetic disc that holds information.....	Floppy disc	hard drive	Monitor	Portable
512	the primary device that a computer uses to store information.....	TV	Storehouse	hard drive	None of these
513	All of the following storage media have read and write capacity except...	flash memory cards	CD-ROMs	hard disc	Floppy disks
514	The main system board of a computer is called the.	integrated circuit	motherboard	processor	microchip
515	Which of the following is a part of the system unit ?	CPU	Monitor	floppy disk	None of these
516	The box that contains the central electronic components of the computer is the	motherboard	system unit	input device	peripheral
517	Storage device found inside the computer-	CD ROM	Zip Disk	super disk	hard disk
518	A device that provides emergency power to your computer, conditions the voltage, and protects power surges is called a	PSU = power supply unit	USP = Universal surge protector	UPS = Universal power protection and supply	UPS = Uninterruptible Power and supply
519	Which of the following is a part of system unit ?	Monitor	CPU	CD-ROM	floppy disc
520	A UPS	limits damage caused by fluctuating levels of electricity	provides battery backup for a limited time	delivers electronic message via a bus	None of these

521	A disk on which you store information-	plate	data disc	paper disc	TV disc
522	A computer's hard disc is	operating system	computer system	computer hardware	None of these
523	A...is a device that not only provides surge protection, but also furnishes your computer with battery back up power during a power outage.	surge strip	USB	UPS	battery strip
524	The motherboard is the...	circuit board that house peripheral	same as the CPU chip	the first chip that is accessed when the computer is turned on	circuit board the contains a CPU and other chip
525	where is the disk put in a computer ?	in the modem	in the hard drive	in to the CPU	in the disc drive
526	thecontrols communications for entire computer system.	arithmetic-logic unit	semiconductor	motherboard	coprocessor
527	The system component that controls and manipulates data in order to produce information is called the...	keyboard	microprocessor	monitor	mouse
528	These provide expansion capability for a computer system	sockets	slots	bytes	bays
529	An example of processing device would be	a magnetic ink reader	a tablet PC	Special function cards	scanners
530	Ais hardware used to read disks.	floppy disk	hardware	input device	disk drive
531	The....is the box that houses the most important parts of a computer system.	software	hardware	input device	system unit
532hard drives are permanently located inside the system unit and are not designed to be removed,unless they need to be repaired or replaced	static	Internal errors	external	remove

533	What reside on the motherboard and connects the CPU to other components on the motherboard ?	Input unit	system bus	ALU	primary memory
534	Which of the following produces high quality output--	impact printer	Non impact printer	plotter	a and b
535	the work done by a computer operator is displayed in which part of computer ?	CPU	VDU	ALU	IBM
536	Which of the following is used to input in computer in digital form ?	Mouse	Keyboard	scanner	Touch screen
537	when was the computer mouse invented by Douglas Engelbart in standford reserch Laboratory	1977	1980	1952	None of these
538	How many types of printers are there ?	one	two	three	four
539	A character printer printscharacters per seconds.	100 to 200	5 to 50	200 to 400	5 to 75
540	A line printer printslines per minutes.	100 to 200	5 to 50	5 to 100	400 to 200
541	A scanner Looks like a.....machine.	type machine	Franking machine	photocopier	Cyclostyle
542	How many arrow keys are there in a computer ?	one	two	three	four
543	In any current available keyboard , how many times number key are repeated ?	one	two	three	four
544	The slate shaped object below mouse is called--	mouse cover	mouse pad	mouse port	None of these
545	Which of the following is an output device ?	printer	moniter	mouse	a and b both
546	what can be the form of data ?	Written	un written	Visual	a and b both
547	Link between computer and a human is possible by--	input and output	input	output	CPU
548	Which of the following is not a type of input and output ?	sound	light	Visual	None of these
549	Which of the following works as mouse ?	keyboard	scanner	icon	track ball
550	Generally which button of the mouse is used for OK ?	left	right	middle	wheel

551is fast speed printer.	Laser printer	jet printer	thermal printe	None of these
552	LCD stands for--	lead crystal device	light central display	liquid central display	liquid crystal display
553	The general method for to input the text and numerical data in computer is by.....	keyboard	scanner	printer	None of these
554	Output deices make it possible to	View and print a data	scan a data	input data	sending data
555	Hard copy of a document is....	printed on printer	stored in floppy	store in CD	store in hard disk
556	Which of the following groups have only input device ?	Mouse, keyboard , moniter	mouse, keyboard, printer	mouse, keyboard , plotter	mouse, keyboard, scanner
557	Any data and instruction entered in the memory of a computer is--	storage	input	Output	information
558	To make the number pad act as a directional arrow, we press	Num lock	caps lock	Arrow lock	shift
559	Which key is used in combination with another key to perform a specific task ?	Function	Spacebar	Arrow lock	control
560	Ctrl, Shift and Alt are calledkeys.	modifier	function	adjustment	None of these
561	Thw pattern printed lines on most produs are called	price	OCR	scanner	bar codes
562	What types of device is a computer printer ?	input	output	software	storage
563	A scanner scans.....	picture	text	a and b both	None of these
564	What would you do to highlight a word ? You position the cursor near to the word, and then....	Drag mouse while holding button down	click mouse once	Roll mouse around	roll and then click mouse
565	A....can make it easier to play games.	mouse	joystick	keyboard	pen

566	In MICR, c stand for	code	colour	computer	character
567	Soft copy is an intangible output, so then what is hard copy ?	The physical parts of the computer	The printed parts of the computer	The printed output	the physical output device
568	A printer is this kind of device--	input	word processing	processing	Output
569	The most common method of entering text and numerical data into computer system is through the use of a--	keyboard	scanner	printer	Output
570	A keyboard is this kind of device--	black	input	output	Word processing
571	Which part of a computer displays the work done ?	RAM	Printer	ROM	monitor
572	Codes consisting of bars or lines of varying widths or lengths that a computer readable are known as--	An ASCII code	A magnetic tape	An OCR scanner	a bar code
573	Whenever we have to give space between the two words while typing on a PC we have to press a key known as--	Backspace	Shift	Ctrl	Spacebar
574	Thekey and the.....key can be used in combination with other keys to perform shortcuts and special tasks.	control,Alt	function, toggle	Delete, insert	capslock, numlock
575	Which type of device is the computer monitor ?	input	output	processing	software
576	The primary output device for computer is a	video monitor	Printer	keyboard	mouse
577	_____ provides the means to move the pointer on the screen and give information to the computer by clicking its buttons.	Scanner	mouse	keyboard	program
578	Soft copy refers to	Printed output	Music sound	Screen output	Digitizing

579	Why is the CAPS LOCK key referred to as a toggle key ?	Because its function goes back and forth every time it is pressed	Because it cannot be used for entering time it is pressed	Because it cannot be used to delete	none of these
580	One puts information into the computer by pressing this key---	Caps lock	Tab	Enter	Esc
581	The key that must be pressed each time command or information is entered--	Esc	Return/Enter	Delete	Home
582	What term is used to describe the mouse to move an item on the screen to a new location ?	click	double-click	drag and drop	point
583	To select text by shading as you drag the mouse arrow over the text is referred to as	clip art	highlight	fetch	decode
584	A button that makes characters either upper or lower case and numbers to symbols--	monitor	shift key	icon	mouse
585	Pick the odd one--	Mouse	Scanner	keyboard	none of these
586	Letters, numbers, and symbols found on a keyboard are	Icon	Screen	Keys	Menu
587	You can use the tab key to	move a cursor across the screen	indent a paragraph	move the cursor down the screen	only (a) and (b)
588	Information that comes from an external source is fed into computer software is called	input	output	throughput	reports
589	Which keys enable the input of numbers quickly ?	Function keys	The numeric keypad	Ctrl, shift and alt	Arrow keys
590	You use a (n) ..., such as a keyboard or mouse, to input information.	storage device	processing device	input device	None of these
591	A(n)..... camera is a peripheral device used to capture still images in a digital format that can be easily transferred into a computer and	digital	analog	classic	film

	manipulated using graphics software.				
592	Digital photos and scanned images are typically stored as.... Graphics with extensions such as .bmp,.jpg, .tif, or gif.	bitmap	vector	either vector or bitmap	None of these
593	Which device is used as the standard pointing device in graphical user environment ?	keyboard	Mouse	joystick	track ball
594	Which of the following is not an output device ?	Flotter	Printer	Monitor	Touch screen
595	The arrow keys can be used to	move the cursor in the text that has already been entered	move the cursor while deleting text	same the document	None of these
596	An error is also known as	bug	Cursor	Debug	Icon
597	In order to tell Excel that we are entering a formula in cell, we must begin with an operator such as?	\$	@	=	+
598	Which of the following have the fastest access time?	Semiconductor Memories	Magnetic Disks	Compact Disks	Magnetic Tapes
599	Cursor is a_____	Pixel	Pointing device	Thin blinking line	None of these
600	Which of the following is not anti viruses software?	NAV	Oracle	F-Prot	McAfee

Answers

501	cannot be erased and rewritten
502	programs and data are both software, and both can be stored of any memory device
503	does not require constant power
504	Storage unit
505	RAM
506	CD-ROM
507	RAM
508	Data in ROM is nonvolatile, that is it remains there even without electrical power
509	Store
510	Memory
511	Floppy disc
512	hard drive
513	CD-ROMs
514	motherboard
515	CPU
516	system unit
517	hard disk
518	UPS = Uninterruptible Power and supply
519	CPU
520	provides battery backup for a limited time
521	Data disc
522	computer hardware
523	UPS
524	circuit board the contains a CPU and other chip
525	in the disc drive
526	motherboard
527	microprocessor

528	slots
529	Special function cards
530	disk drive
531	system unit
532	internal
533	system bus
534	plotter
535	VDU
536	scanner
537	None of these
538	two
539	200 to 400
540	400 to 200
541	photocopier
542	four
543	two
544	mouse pad
545	a and b both
546	a and b both
547	input and output
548	light
549	track ball
550	left
551	Laser printer
552	liquid crystal display
553	keyboard
554	View and print a data
555	printed on printer
556	mouse, keyboard, scanner
557	input
558	shift
559	control
560	modifier
561	bar codes
562	output
563	a and b both
564	Drag mouse while holding button down
565	joystick
566	character

567	The printed output
568	Output
569	output
570	input
571	monitor
572	a bar code
573	Spacebar
574	control, Alt
575	output
576	video monitor
577	mouse
578	Screen output
579	Because its function goes back and forth every time it is pressed
580	Enter
581	Return/Enter
582	drag and drop
583	highlight
584	shift key
585	keyboard
586	Keys
587	move a cursor across the screen
588	input
589	The numeric keypad
590	input device
591	digital
592	bitmap
593	Mouse
594	Touch screen
595	more the cursor in the text that has already been entered
596	bug
597	=
598	Semiconductor Memories
599	Thin blinking line
600	Oracle

Section-7

GAMING

MADE BY ASSASSINOZO



A video game or computer game is an electronic game that involves interaction with a user interface or input device – such as a joystick, controller, keyboard, or motion sensing device – to generate visual feedback.

Section-7

Each Section has 100 Multiple Choice Questions (MCQ).
Each question has four choices. Student to Tick the correct answer.

Sr. No.	Question	A	B	C	D
601	The Second Generation was based on_____	Vacuum Tube	Transistor	Silicon Chips	Bio Chips
602	In which mode Windows starts with only the core drivers and services?	Safe Mode	Normal Mode	Quick Mode	Repair Mode
603	Which disk format can access by MS-DOS 6.0?	OSX	NTFS	FAT	EXT2
604	The output quality of Printer is measured by	Dot per sq. inch	Dot per inch	Dots printed per unit time	All of the above
605	ASCII stands for	American Standard Code of Information Interchange	American Scientific Code of International Interchange	American Standard Code of Intelligence Interchange	American Scientific Code of Information Interchange
606	Which generation of computers is covered by the period 1964-77?	First	Second	Third	Forth
607	A digital device that processes data is known as	Data processor	Data entry	DBMS	Database
608	Computer cannot do anything without a	Chip	Memory	Output device	Program
609	Which one of the following is the first second-generation computer?	IBM 7090	IBM 801	IBM 7070	IBM 650
610	What is the term which represents the use of links between information of all sorts whether text, graphics, video oi audio-based?	Hypertext	Hypermedia	HyperCard	Wildcard
611	Offline device is	a device which is not connected to CPU	a device which is connected to CPU	a direct access storage device	an I/O device

612	Who is called the "grand father" of the computer?	Blaise Pascal	Charles Babbage	Joseph Jacquard	Dr. Herman Hollerith
613	The CPU chip used in a computer is partially made out of	silica	copper	Silver	carbon
614	Magnetic tape can serve as :	secondary-storage media	output media	input media	All of the above
615	A device that converts digital signals to analog signals is	A packet	A modem	A block	Both (A) and (B)
616	The first movie released in 1982 with terrific computer animation and graphics was	Star wars	Tron	Forbidden planet	Dark star
617	The first mechanical computer designed by Charles Babbage was called..	Abacus	Analytical Engine	Calculator	Processor
618	Where is the headquarters of Intel located?	Tucson, Arizona	Redmond, Washington	Richmond, Virginia	Santa Clara, California
619	Who co-founded Hotmail in 1996 and then sold the company to Microsoft?	Shawn Fanning	Ada Byron Lovelace	Sabeer Bhatia	Ray Tomlinson
620	Who developed Yahoo?	Dennis Ritchie & Ken Thompson	David Filo & Jerry Yang	Vint Cerf & Robert Kahn	Steve Case & Jeff Bezos
621	Who built the world's first binary digit computer: Z1...?	George Boole	Konrad Zuse	Ken Thompson	Alan Turing
622	Which Intel chip was the first to support a 32-bit bus architecture?	286	486SI	Pentium	386DX
623	On what date was the debut of the first IBM Personal Computer?	28876	29454	29963	29810
624	Which cable is used to connect your television set with cable TV Operator?	Co - axial Cable	Radio Cables	Fiber Optic	None of These
625	_____ is destroys the computer data.	Printer	DOS	Virus	ROM
626	_____ Information can be stored in one CD-ROM.	600 MB	700 MB	800 MB	1000 MB

627	GUI is used as an interface between _____	Hardware and Software	Man and Machine	Software and User	None of these
628	Comparing data values and taking decisions is called _____ operation.	Logical	sorting	Arithmetic	None of these
629	RAM stands for.....	photoshop raw data	right about mouth	remark	None of these
630	FIFO stands for.....	fiber imulson interpreter object	formula translation	first in first out	none of these
631	LAP stands for.....	link control protocol	link access program data	link access procedure	local area network
632	IF stands for.....	internet engineering	initial force	none of these	input file
633	CSU stands for.....	Carrier sensing unit	Carrier sense multiple access	Channel service unit	None of these
634	WAP stands for.....	wireless application protocol	wide area protocol	wide area information service	wireless access protocol
635	SCR stands for.....	sustained cell rate	significant cell rate	single channel per carrier	none of these
636	IBG stands for.....	Internet Activities Board	International Business Governance	Inter Block Gap	All of these
637	The term.....refuse the set of electronic instruction that tells the Hardware what to do.	Data	Hardware	Software	None of these
638	A computer performs following operation on data.....	Calculation	Storage/retrieval	Logic/comparison	All of these
639	Who invented the high level language c?	Dennis M. Ritchie	Niklaus Writh	Seymour Papert	Donald Kunth

640	BCD is...	Binary Coded Decimal	Bit Coded Decimal	Binary Coded Digit	Bit Coded Digit
641	The first computer introduced in Nepal was...	IBM 1400	IBM 1401	IBM 1402	IBM1403
642	In the following device _____ is a plug and play device.	Printer	Zip Drive	Key board	Scanner
643	Which of the following can be used as primary memory?	Cartridge	Optical disk	Hard disk	None of these
644	Add, Subtract, Divide, Multiply and Logic operations are performed by _____	Registers	Control Unit	ALU	None of these
645	A _____ is a collection of button which represents various operations that can be carried out within an application.	Buttons	Menu	Toolbar	None of these
646	The gigantic work of simulating the airflow around an entire aircraft can only be done by using fast _____	Micro Computers	Mini Computers	Super Computers	None of these
647	Which of the following admirable capability is provided in most of the workstations?	Numeric Processing	Graphics	Text Manipulation	None of these
648	The user protection feature of an operating system is required in _____	Single user systems	Multiuser systems	Both A and B	None of these
649	Which of the following software checks the syntax errors in program	Compiler	Interpreter	Both of A and B	None of these
650	Which of the following description is related to floppy disk?	9 track, 16 BPI	Double Sided, Double density	33 Mhz, Zero wait time	40MB space
651	The Difference between memory and storage is that memory is _____ and storage is _____	Temporary, Permanent	Permanent, Temporary	Slow, Fast	None of these
652	A Floppy disk contains _____	Circular tracks only	Sectors only	Both Circular tracks and Sectors	None of these
653	Which of the following is not a part of computer hardware	Keyboard	CPU	Operation System	Motherboard

654	Joy Stick is an example of _____	Input Device	Output Device	Primary Memory	Secondary Memory
655	Dialog box section in which we may enter data are _____	Spinners	Command Buttons	Sliders	All of these
656	First calculating device is-	clock	difference engine	calculator	Abacus
657	First mechanical calculator was invented by-	Josep Marie Jacquard	John Mauchley	Blaise Pascal	Haward Aiken
658	Who invented punch card ?	pavrus	Jacquard	Pascal	None of these
659	Computer that was made before 1st generation computer--	Mechanical	electromechanical	electrical	All of these
660	Analog computer is--	A machine which work on data which is always changeable	An arithmetic high level	communicate at low level	None of these
661	What is laptop ?	computer use in clinical laboratory	computer made ley compact	small, light weight computer which fits in suitcase	All of these
662	Super computer _____	it processes data of more than one user at a time	it is a fast and costly computer system	it is used in large organisations	All of these
663	Cooputer's basic arithitecture was developed by--	Jhone Van Neumann	charles Babbage	Blaise Pascal	Jordan Murn
664	Charaacteristic of fifth generation computer is--	Used in home	Artificial intelligence	Very loe cost	None of these
665	A Computer portable and easy to carry by traveller is--	super computer	Laptop	Mini computer	file servers

666	In production of I.C. chip of computer what is needed in the following --	Chromium	Silicon	Platinum	Gold
667	IN which generation did multiprogramming start ?	First generation	Second generation	Thired generation	fourth generation
668	Multics opreting system fore mainfirme was developed by--	Infuses	Microsoft	Jerman Laborator y	Bell laboratory
669	First mechanical calculator of charle babbage is known as--	Palmtop	Processor	Calculato r	None of these
670	First super computer of the world was devloped in--	1978	1976	1980	1981
671	computer for personal use is --	Mini computer	Super computer	Micro computer	mainframe computer
672	First super computer developed in india is--	Param	Aryabhata	Buddha	Ram
673	Faster computer is--	Mini computer	Super computer	Micro computer	Mainfirme
674	Which generation of computer is worked with FORTRAN ?	First	Second	thired	Fourth
675	IN which generation was microprocessor introyced ?	First	Second	thired	Fourth
676	Remote processing and time sharing was introduced in...genertion :	First	Second	thired	Fourth
677	Abacus was developed in--	India	china	America	Rassia
678	Remedy in first generation computer was--	Small size	Large size	No heat generatio n	B and C both
679	Types of computer on working style is -	Digital	Analog	Micro	a and b both
680	Microcomputer is convereted into super minicomputer by using the.....super chip--	80586	80386	70508	70309
681is television size computer-	Optical	Micro	Super mini	mainframe
682	Processing capacity of microcomputer is Per second--	one lac	two lac	five lac	four lac

683	Imac is a--	Processor	Modem	Machine	network
684	analytical engine was developed by--	Lovelace	H.Aiken	Charls Babbage	All of these
685	What is a main characteristic of computer in the following option ?	File	Game	Speed	CD
686	Main electronic part in first generation computer was--	Transistor	VLSI	Vacuum tube	IC
687	Which one is not a type of computer the basis of size--	Micro computer	Mini computer	Super mini computer	optical computer
688is not a micro computer--	Home computer	personal computer	Atomic computer	None of these
689	At first punched card was used by---	balise pascal	haward aiken	jhon mauchaly	joshep marie
690	Great contributor in devlopment of computer was by --	H.hallerilt	C.Babbage	Blaise Pascal	None of these
691	Great contributor in devlopment of blueprint of rhythical computer was--	H.hallerilt	C.Babbage	Blaise Pascal	Willium buras
692	Modem computer was developed in--	1946	1950	1960	1965
693	Who developed integrated chip ?	C.V.raman	Robert Nayak	C.Babba ge	j.s.kilbi
694	Which material is layered at megnetic disk ?	iron oxide	phosphorous bentaoxide	magnesium oxide	None of these
695	The most powerfull computer is--	super computer	Micro computer	Mini computer	All of these
696	In a silicon chip complete electronic circuit with transistors and other the electronic device is called--	work station	CPU	Integrate d circuit	magnetic disk
697	The digital computer is worked on the theory of--	Calculati on	Measurement	Electric	logical
698	The super computer is distinguish from other computer by--	high cost	problem of airconditiones	large memory and calculatin g power	many uses
699	A modem digital computer uses,number system--	binary	decimal	hexadeci mal	All of these

700	Which generation was developed by discovery of I.C.--	First generation	Second generation	third generation	fourth generation
-----	---	------------------	-------------------	------------------	-------------------

Answers

601	Transistor
602	Safe Mode
603	FAT
604	Dot per inch
605	American Standard Code of Information Interchange
606	Third
607	Data processor
608	Program
609	IBM 7090
610	Hypermedia
611	a device which is not connected to CPU
612	Charles Babbage
613	silica
614	All of the above
615	A modem
616	Star wars
617	Analytical Engine
618	Santa Clara, California
619	Sabeer Bhatia
620	David Filo & Jerry Yang
621	Konrad Zuse
622	386DX
623	29810
624	Co - axial Cable
625	Virus
626	700 MB
627	Man and Machine
628	Logical
629	none of these
630	first in first out
631	link access procedure
632	input file

633	Channel service unit
634	wireless application protocol
635	none of these
636	Inter Block Gap
637	Software
638	All of these
639	Dennis M. Ritchie
640	Binary Coded Decimal
641	IBM 1401
642	Key board
643	None of these
644	ALU
645	Toolbar
646	Super Computers
647	Text Manipulation
648	Both A and B
649	Both of A and B
650	Double Sided, Double density
651	Temporary, Permanent
652	Both Circular tracks and Sectors
653	Operation System
654	Input Device
655	Spinners
656	Abacus
657	Blaise Pascal
658	None of these
659	electrical
660	A machine which work on data which is always changeable
661	All these
662	All these

663	charles Babbage
664	Artificial intelligence
665	Laptop
666	Silicon
667	Thired generation
668	Bell laboratory
669	None of these
670	1976
671	Micro computer
672	Param
673	Super computer
674	Fourth
675	Fourth
676	thired
677	China
678	Large size
679	a and b both
680	80386
681	Micro
682	one lac
683	Machine
684	Charls Babbage
685	Speed
686	Vacuum tube
687	optical computer
688	Atomic computer
689	joshep marie
690	Blaise Pascal
691	Blaise Pascal
692	
693	j.s.kilbi
694	Iron oxide
695	super computer
696	Integrated circuit
697	Calculation
698	large memory and calculating power
699	binary
700	third generation

Section-8



INTERNET OF THINGS

The Internet of things describes the network of physical objects—a.k.a. "things"—that are embedded with sensors, software, and other technologies for the purpose of connecting and exchanging data with other devices and systems over the Internet.

Section-8

Each Section has 100 Multiple Choice Questions (MCQ).
Each question has four choices. Student to Tick the correct answer.

Sr. No.	Question	A	B	C	D
701	The main characteristic of 4th generation was --	Transister	VLSI	Ic	Vacuum tube
702	CRYA is a--	Mini computer	Super computer	Micro computer	mainframe computer
703	Which of following refers to the fastest, biggest and most expansive computer ?	Personal computer	Super computer	Laptop	Note book
704	Which type of computer could be found in a digital watch ?	Mainframe	Super computer	note book computer	Embedded language
705	The first computer programmed using	Assembly language	Machine language	source code	None of these
706	Digital computers use a....system to encode data and programs.	semi conductor	Machine language	binary	RAM
707	A computer falls into the ...category if it is, at the time of construction, one of the fastest computer in the world.	mini computer	Super computer	microcomputer	a and b both
708	Who is known as the father of computers?	Tim Berners Lee	Vinton Cerf	charles Babbage	Blaise pascal
709	What is the internet country code for India	com	ind	in	indy
710	What does AMD stands for what?	Advanced Micro devices	American Micro Devices	Atos Motion Detectors	Asus Micro Devices
711	What is the term used for the Citizens of the internet?	Citizens	Netizens	Citiwebs	Webinets
712	Valves are a part of which Generation of computers?	Fourth	First	Second	Third
713	What two words make up the word MODEM?	Modifier Demodifier	Modern Denominator	Modulator Demodulator	Multiple Defibrillator
714	What function is performed by the use of the Ctrl+S keys in MS Office?	Open	Select All	Paste	Save

715	On a power point presentation which key will begin the slideshow from the beginning?	F1	F8	F5	F2
716	Aamir Khan is the brand ambassador for which of these Digital TV Service Providers?	DD TV	Dish TV	BIG TV	Tata Sky
717	Akio Morita is the founder of which company?	Toshiba	Samsung	LG	Sony
718	Jack Kilby is associated with which of these?	Interconnect Calls	Integrated Circuits	Internal Circuits	Integrated Computers
719	Which of these is an input device?	Monitor	Light pen	Speaker	Printer
720	Which numeral system does a digital computer use?	Decimal system	Binary system	Quaternary system	Centenary system
721	Bit, a unit of computer stands for what?	Bidecimal Dial	Binary digit	Bilingual Information Technology	Binary informing Degree
722	Martin cooper is the father of which famous device?	Web browsers	e-mails	mobile phones	calculators
723	Expand LCD?	Light Controlled Device	Light Crystal Diode	Light Coloured Display	Liquid Crystal Display
724	What is the shortcut for undo in MS Office?	Ctrl + Z	Ctrl + U	Ctrl + X	Ctrl + A
725	What does USB stands for?	Universal Serial Bus	United Standard Binary	Universal Serial Bits	Unique Serial Bit
726	If SMS stands for short Messaging Service, what does MMS stand for?	Many Media Service	Motorola Media Service	Minor Messaging Service	Multimedia Messaging Service
727	Which OS has a green robot as its logo?	Explorer	Bada	Opera	Android
728	Which country's official country domain is .gb?	Gambia	Greenland	Great Britain	Greece
729	Expand XML?	Extended Markup Language	Xray Managed Language	Exclusive Monitor Language	XM Lingo
730	Flatron is a monitor from which company?	Samsung	Acer	Philips	LG

731	Robert Noyce is the co- founder of which company?	Intel	GE	Microsoft	Disney
732	You can use to copy selected text; and to paste it in a document.	CTRL + C, CTRL + V	CTRL + C, CTRL + P	SHIFT + C, ALT + P	CTRL + D, CTRL + A
733	Numbers in table columns are usuall	right-aligned	left-aligned	justified	centered
734	Each box in a spreadsheet is called a	cell	record	field	table
735	A collection of related files is called	Character	Field	Data base	Record
736	When a file is saved for the first time	a copy is automatically printed	file name and folder name must be the same	it does not need a name	it must be given a name to identify it
737	In which group do we work at the time of text formatting in word ?	Table, Paragraph and Indexes	Paragraph, Indexes and Sections	Characters, sections and paragraphs	Indexes, Characters and Tables
738	The letter and number of the intersecting column and row is the—	Cell location	Cell position	Cell address	Cell contents
739	To save an existing file with new name at new location we should use command.	Save	Save and replace	Save as	New file
740	Forms that are used to organize business data into rows and columns are called	Transaction sheets	Registers	Business forms	Spreadsheets
741	In power point, the Header & Footer button can be found on the insert tab in what group?	Illustration s group	Object group	Text group	Tables group
742	The PC productivity tool that manipulates data organized in rows and columns is called a	Spreadsheet	Word processing document	Database record manager	EDI creator
743	Which Powerpoint view displays each slide of the presentation as a thumbnail and is useful for rearranging slides ?	Slide Sorter	Slide Show	Slide master	Slide Design

744	If a previously saved file is edited	it cannot be saved again	the changes will automatically be saved in the file	the file will only have to be saved again if it is more than one page in length	the file must be saved again to store the changes
745	To print a document	select the Print command and then select OK	select the Ready Printer command then select OK	type Print and then press Enter	close the document, select the Print command, then select OK
746	Which option is correct to enter the charts in ms excel—	Formulas>>charts	Data>>charts	Insert menu>>charts	View>>charts
747	A is a collection of information saved as a unit.	folder	file	path	file extension
748	What is a list of data files of any database called ?	Data diary	Data list	Data disc	Data dictionary
749	What is the overall term for creating, editing, formatting, storing, retrieving and printing a text document ?	Word processing	Spreadsheet design	Web design	Database management
750	What is the main folder on a storage device called ?	Root directory	Interface	Device driver	Platform
751	A file is often referred to as a (n)	Wizard	Document	Pane	Device
752	Excel workbook is a collection of	Chart	Word book	Worksheet	a and c
753	Microsoft Office is an example of a	closed source software	open source software	horizontal market software	vertical market software
754	Which of the following is not related to text formatting ?	Line spacing	Text spacing	Margin change	Searching
755	To correct the spelling in Ms-Word we use	Spellpro	Spellcheck	Outlook Express	All of These
756	In a spreadsheet program the contains related worksheets and documents.	Workbook	Column	Call	Formula

757	Which one of the following software applications would be the most appropriate for performing numerical and statistical calculations ?	Data base	Document processor	Graphics package	Spreadsheet
758	The word wrap feature-	Automatically moves the text to next line when necessary	Appears at the bottom of the document	Allows you to type over text	Is the short horizontal line indicating the end of the document
759	The background of any word document	is always white colour	is the colour you preset under the option menu	is always the same for the entire document	Can have any colour you choose
760	What is a default file extension for all word documents ?	TXT	WRD	FIL	DOC
761	Text in a column is generally aligned	Justified	Right	Center	Left
762	A directory within a directory is called	Mini directory	Junior directory	Part directory	Sub directory
763	For opening and closing of a file in excel, you can use which bar ?	Formatting	Standard	Title	Formatting or Title
764	You click at B to make the text	Italics	Underlined	Italics and under lined	Bold
765	For creating a document, you use command at file menu.	Open	Close	New	Save
766	You can start Microsoft word by using button.	New	Start	Program	Control panel
767	In excel, charts are created using which option ?	Chart wizard	Pivot table	Pie chart	Bar chart
768	In page preview mode	You can see all pages of your document.	You can only see the page you are currently working on.	You can only see pages that do not contain graphics.	You can only see the title page of your document.

769	File extensions are used in order to	Name the file	Identify the file	Answer the file name is not last	Identify the file type
770	Which one of the following software applications would be the most appropriate for performing numerical and statistical calculations ?	Database	Document processor	Graphic package	Spreadsheet
771	Which elements of a word document can be displayed in colour ?	Only graphics	Only text	All elements	All elements, but only if you have a colour printer
772	Which keyboard shortcut bolds selected text ?	Ctrl + B	Alt + B	File / format /bold	These all
773	A collection of related information sorted and dealt with as a unit is a	Disk	Data	File	Floppy
774	MS-Word is an example of—	An operating system	A processing device	Application software	An input device
775	The blinking point which shows your position in the text is called—	Blinker	Cursor	Causer	Pointer
776	Which application is commonly used to prepare a presentation/ slide show?	Photoshop	Power point	Outlook Express	Internet explorer
777	The quickest and easiest way in word, to locate a particular word or phrase in a document is to use the command.	Replace	Find	Lookup	Search
778	What kind of software would you most likely use to keep track of billing account ?	Word processing	Electronic publishing	Spreadsheet	Web authoring
779	What are bas, doc and htm examples of ?	Data bases	Extensions	Domains	Protocols
780	A is a unique name that you give to a file of information.	Device letter	Folder	File name	File name extension
781	Editing document consists of reading through the document you've created, then-	Correcting your errors	Printing it	Saving it	Defeating it

782	In a database, fields store numbers used to perform calculation.	Next	Key	Alphanu meric	Numeric
783	All of the following terms are associated with spreadsheet software except—	Worksheet	Cell	Formula	Virus detection
784	Which of the following is not true about computer files ?	They are collections of data saved to a storage medium.	Every file has a file name.	A file extension is established by the user to indicate the files content	Files usually contain data.
785	The main directory of a file is called the directory.	Root	Sub	Folder	Network
786	To add or put into your document such as a picture or text use—	TV	Insert	Push in	Squeeze in
787	What is the main folder on a storage device called ?	Platform	Interface	Root Directory	Home page
788	For creating a document, you use command at file menu.	Open	Close	New	Save
789	A(n) is created by an application.	Executabl e file	Software program	Documen t	Operating system
790	Two different files can have the same name if	They are in different folders.	They are on different drives.	Never.	The names are capitalized differently.
791	Meaningful filename helps in easy file	Storing	Accessing	Identificat ion	Printing
792	A program that enables you to perform calculations involving rows and columns of numbers is called a	Spreadshe et program	Word processor	Graphics package	Window
793	To a document means to make changes to its existing content.	Format	Save	Edit	Print
794	Periodically adding, changing and deleting file records is called file	Updating	Removing	Restructu ring	Renewing
795	How do you save a presentation under a new file name ?	Select the file menu and	When you close power point the file	Select the file menu	The file will automatically be saved

		choose save as	will automatically be saved	and choose save	under the new name if you change the title
796	Saving is the process of	copying a document from memory to a storage medium	making changes to a document's existing content	changing the appearance, or overall look, of a document	developing a document by entering text using a keyboard
797	When computer users a document, they change its appearance.	Edit	Create	Save	Format
798	What menu is selected to print ?	File	Tools	Special	Edit
799	A saved document is referred to as a	File	Word	Folder	Project
800	A command that takes what has been typed into the computer and can be seen on the screen and sends it to the printer for output on paper	Print	Return	Jump	Attention

Answers

701	Vacuum tube
702	Super computer
703	super computer
704	Embedded language
705	Machine language
706	binary
707	Super computer
708	charles Babbage
709	in
710	Advanced Micro devides
711	Netizens
712	First
713	Modulator Demodulator
714	Save
715	F5
716	Tata Sky
717	Sony
718	Integrated Circuits
719	Light pen
720	Binary system
721	Binary digit
722	mobile phones
723	Liquid Crystal Display
724	Ctrl + Z
725	Universal Serial Bus
726	Multimedia Messaging Service
727	Android
728	Great Britain
729	Extended Markup Language
730	LG
731	Intel
732	CTRL + C, CTRL + V
733	right-aligned
734	cell
735	Data base
736	it must be given a name to identify it

737	Table, Paragraph and Indexes
738	Cell address
739	Save as
740	Spreadsheets
741	Text group
742	Spreadsheet
743	Slide Sorter
744	the file must be saved again to store the changes
745	select the Print command and then select OK
746	Insert menu>>charts
747	file
748	Data dictionary
749	Word processing
750	Root directory
751	Document
752	Worksheet
753	horizontal market software
754	Searching
755	Spellcheck
756	Workbook
757	Spreadsheet
758	Automatically moves the text to next line when necessary
759	Can have any colour you choose
760	DOC
761	Left
762	Sub directory
763	Standard
764	Bold
765	New
766	Start
767	Chart wizard
768	You can see all pages of your document.
769	Identify the file type

770	Spreadsheet
771	All elements
772	Ctrl + B
773	File
774	A processing device
775	Cursor
776	Power point
777	Find
778	Word processing
779	Extensions
780	File name
781	Correcting your errors
782	Numeric
783	Virus detection
784	A file extension is established by the user to indicate the files content
785	Root
786	Insert
787	Root Directory
788	New
789	Document
790	They are in different folders.
791	Identification
792	Spreadsheet program
793	Edit
794	Updating
795	Select the file menu and choose save as
796	copying a document from memory to a storage medium
797	Format
798	File
799	File
800	Print

Section-9

NETWORKING



A computer network is a group of computers that use a set of common communication protocols over digital interconnections for the purpose of sharing resources located on or provided by the network nodes.

Section-9

Each Section has 100 Multiple Choice Questions (MCQ).
Each question has four choices. Student to Tick the correct answer.

Sr. No.	Question	A	B	C	D
801	To find a saved document in the computer's memory and bring it up on the screen to view	Reverse	Rerun	Retrieve	Return
802	Allows you to print	Ribbon	Monitor	Go now	Control-P
803	The different styles of lettering in a word processing program	Font	Calligraphy	Writing	Manuscript
804	To change written work already done	File	Edit	Cut	Close
805	To exit the program without leaving the application	File	Edit	Copy	Cart away
806	A command that saves what you are working on into the hard drive, or onto a disk	View	Hold	Save	Go
807	A command to get a file you worked on from the memory where it was stored	Close	Delete	Open	Get it
808	A program that works like a calculator for keeping track of money and making budgets	Calculato r	Spreadsheet	Budgeter	Financier
809	What menu is selected to save or save as ?	Tools	File	Format	Edit
810	A includes the file name and possibly a directory of folder	File informati on packet	File button	File directory	File specification
811	To print a document, press then press Enter.	Shift + P	Ctrl + P	Alt + P	Esc + p
812	A(n) in text that you want printed at the bottom of the page.	Header	Endnote	Footnote	Footer
813	What menu is selected to change font and style ?	Tools	File	Format	Edit
814	Items such as names and addresses are considered	informati on	input	records	data
815	A telephone number, a birth date, and a customer name are all examples of	a record	data	a file	a database

816	Which of the following contains information about a single "entity" in the database—like a person, place, event or thing ?	query	form	record	table
817	Numbers in table columns are usually	right-aligned	left-aligned	justified	centered
818	By default, your documents print in mode.	Landscape	Portrait	Page Setup	Print View
819	Which type of file is created by word processing programs ?	database file	storage file	worksheet file	document file
820	Data (information) is stored in computers as	files	directories	floppies	matter
821	The name a user assigns to a document is called a(n)	filename	program	record	data
822	What is the main folder on a storage device called ?	Platform	Interface	Root directory	device driver
823	In order to e-mail a Word document from within Word	Go to file / Send To / Mail Recipient	Save the file as an e-mail attachment	Start Outlook and attach the file while open in Word	This is an impossible operation
824	The feature in Word automatically corrects certain spelling, typing, capitalization, or grammar errors.	AutoFix	AutoSpell	AutoMark	AutoCorrect
825	You organize files by storing them in	archives	folders	indexes	lists
826	In order to create columnar data in Word you need to	Tab consecutively until cursor reaches the desired place	Set tabs or use the Table menu	You need to use Excel	Press the space bar until your cursor reaches the desired place
827	When you want to move some text from one page to a different page, the best method is	drag and drop	cut and paste	delete and retype	find and replace
828	A red wavy line under a word indicates that the word	is too long for	is not in the dictionary file and therefore	is not appropriate for that	is a verb

		the line of text	might be spelt incorrectly	particular sentence	
829	When creating a word-processed document, this step involves the user changing how words on the page appear, both on the screen and in printed form	Editing text	Inserting tables and indexes	Formattin g text	Proofing documents
830	When a file is saved for the first time	a copy is automatic ally printed	it must be given a name to identify it	it does not need a name	it only needs a name if it is not going to be printed
831	The acronym DBMS stands for what ?	double-blind manage ment setup	document binder management system	data binding and marketin g structure	None of these
832	Software you can use to create a budget is called	word processin g software	graphics software	utility software	spreadsheet software
833	Numbers and formulae en ed in a cell are called	labels	numeric entries	intersecti on	text
834	The red wave underline in MS-Word document indicates—	Spelling errors	Grammar errors	Address block	Printing errors
835	ALU Stands for—	Arithmeti c logic unit	Arithmetic large unit	Arithmeti c long unit	All
836	Which of these is CPU ?	Chip	Box	Circuit	Peripheral
837	Basic operation done by computer is—	Arithmeti c operation	Logical operation	Data storage	All
838 is called brain of computer--	CPU	Monitor	Modem	Software
839	Which of these establishes link between V.D.U. and Keyboard ?	Printer	Mouse	C.P.U	Terminal
840	Whcih part of the computer is used for calculating and comparing ?	ALU	Control unit	Disk unit	Modem
841	Function of CPU is —	Arithmeti c calculatio n	Comparison between the value of two objects	Search of desired data in artificial memory	None of these

842	Which unit controls the movement of signals between CPU and I / O ?	ALU	Control unit	Memory unit	Secondary storage
843	Computer is named as intelligence.	pure	human	artificial	all
844	The three main parts of the processor are	ALU, Control unit and Registers	ALU, Control unit and RAM	Cache, Control unit and Registers	Control unit, Registers and RAM
845	is the function of the Central Processing Unit of a computer ?	Creates invoices	Performs calculations and processing	Deletes Data	Corrupts the data
846	Capacity of computer is —	Limited	Unlimited	Low	High
847	Controlling part of computer is—	Printer	Keyboard	C.P.U.	None of these
848	Computer-- 1.A device which is able to store data 2.A device which is able to analyse data 3.A device which is able to maintain full security 4.Sometime attacked by virus Select a correct answer—	1 and 2	1, 2, and 3	1, 2 and 4	All
849	The basic computer processing cycle consists of	Input, processing and output	Systems and application	Data, information and applications	Hardware, software and storage
850	Compare is —	Arithmetic function of ALU	Logical function of ALU	Input and output of ALU	All
851	Theory for working of computer is—	Input	Output	Process	All
852	Main component of CPU is—	Control unit	Memory	ALU	All
853	Processed data of computer is called—	Input	Output	Process	All
854	Function of CPU is—	Control input and output device	Immediate storage of data	Read the instruction and give command	All

855	What is output ?	Which is taken by user to processor	Which is get to processor by user	Which is get to user from processor	None of these
856	Part of computer which does addition, subtraction, multiplication, division and comparison--	ALU	Memory	CPU	Control
857	General mathematical operation performs for CPU is —	ALU	DIMM	BUS	Register
858	The basic goal of computer process is to convert data into—	Files	Tables	Information	Graphs
859	Arithmetic operations—	Involve matching one data item with another to determine if the first item is greater than or equal to or less than the other item	Sort data items according to standard, predefined criteria in ascending order or descending order	Use conditions with operators such as AND, OR and NOT	Include addition, subtraction, multiplication and division
860	Processing involves—	Inputting data into a computer system	Transforming input into output	Displaying output is a useful manner	Providing relevant answer
861	Input, output and processing devices grouped together represent—	Mobile device	Information processing cycle	Circuit board	Computer system
862	The name of the location of a particular piece of data is its—	Address	Memory name	Storage	Data location
863 is the part of the computer that does the arithmetical calculations.	Memory	OS	CPU	ALU
864	A CPU contains	A card reader and a	An analytical engine and a control unit	A control unit and an	An arithmetic logic unit and a card reader

		printing device		arithmetic logic unit	
865	The benefit of using computer is that-	Computers are very fast and can store huge amounts of data.	Computers provide accurate output even when input is incorrect.	Computers are designed to be inflexible.	All of these
866	Computations and logical operations are performed by the	RAM	ALU	Register	Control unit
867	The function of CPU is	To provide external storage of text	To communicate with the operator	To read, interpret and process the information and instruction	Assembler
868	Example of non-numeric data is	Employee address	Examination score	Bank balance	All of these
869	The information you put into the computer is called	directory	facts	data	files
870 is data that has been organized or presented in a meaningful fashion.	A process	Storage	Software	Information
871	The part of a computer that coordinates all its functions is called its--	ROM program	System board	Arithmetic logic unit	Control unit
872 represents raw facts. Whereas is meaningful data—	Information, reporting	Data, information	Information bits	Records, bytes
873	The benefit of using computers is that	computers are very fast and can store huge amounts of data.	computers provide accurate output even when input is incorrect.	computers are designed to be inflexible.	all of the above

874	The function of CPU is	to provide external storage of text	to communicate with the operator	to read, interpret and process the information and instruction	to provide a hard copy'
875 is the process of carrying out commands.	Fetching	Storing	Decoding	Executing
876	Computers gather data, which means they allow users to data.	present	store	output	input
877	Which of the following is not the major function of a computer ?	Processing data into information	Storing data or information	Gathering data	Analysing data or information
878	The central processing unit (CPU)	contains the electronic circuits that cause processing to occur	makes the information resulting from processing available for use	allows data programs , commands, and user responses to be entered into a computer	consists of electronic components that store data
879	A collection of unprocessed items is	information	data	memory	reports
880	The is responsible for performing calculations and contains decision-making mechanisms.	Central Processing Unit	Memory unit	Arithmetic and Logic Unit	Output Unit
881	This component is required to process data into information and consists of integrated circuits—	Hard disk	RAM	CPU	ROM
882	Computers manipulate data in many ways, and this manipulation is called	utilizing	batching	upgrading	processing
883 is the result produced by a computer.	data	Memory	Output	Input

884	In an information system, alphanumeric data normally takes the form of	Sentences and paragraphs	Numbers and alphabetical characters	Graphic shapes and figures	Human voices and other sounds
885	Memory unit is one part of	Control unit	Central Processing Unit	Input device	Output device
886	Computer is whatever is typed, submitted, or transmitted to a computer system—	input	output	data	circuitry
887	Manipulating data to create information is known as	feedback	programming	processing	analysis
888	Hardware used to translate words, sounds, images, and actions that people understand into a form that the system unit can process is known as	device drivers	device readers	input devices	output devices
889	The tells the rest of the computer how to carry out a program's instructions.	ALU	control unit	system unit	motherboard
890	The information processing cycle includes the following processes	input, processing, output, storage	input, output, manipulation, arithmetic	data, processing, printing, editing	storage, display, data, information
891	The arithmetic/ logic unit performs the following actions ...	checks data for accuracy	does calculations using addition, subtraction, multiplication, and division	does logical comparisons, such as equal to, greater than, less than	does both calculations and logical comparisons
892	The computer's processor consists of the following parts	CPU and Main Memory	Hard Disk and Floppy Drive	Main Memory and storage	Operating system and Applications
893	A microprocessor is the brain of the computer and is also called a(n)	microchip	macrochip	macroprocessor	calculator
894	Main memory works in conjunction with	special function cards	CPU	RAM	Intel

895	The main job of a CPU is to	carry out program instructions	store data/information for future use	process data and information	both (a) and (c)
896	When speaking of computer input and output, input refers to	any data processing that occurs from new data input into the computer	data or information that has been entered into the computer	the transmission of data that has been input into the computer	Both (b) and (c)
897	All of the logic and mathematical calculations done by the computer happen in/ on the	system board	central control unit	central processing unit	mother board
898	The primary goal of a computer system is to turn data into	ideas	suggestions	information	reports
899	Arithmetic operations	involve matching one data item to another to determine if the first item is greater than, equal to, or less than the other item.	sort data items according to standard, predefined criteria in ascending order or descending order	use conditions with operators such as AND, OR and NOT	include addition, subtraction, multiplication, and division
900	Once information is input into a computer it becomes	objects	data	ideas	facts

Answers

801	Retrieve
802	Control-P
803	Font
804	Edit
805	Cart away
806	Save
807	Open
808	Spreadsheet
809	File
810	File directory
811	Ctrl + P
812	Footer
813	Format
814	records
815	a database
816	record
817	left-aligned
818	Portrait
819	document file
820	files
821	filename
822	Root directory
823	Go to file / Send To / Mail Recipient
824	AutoCorrect
825	folders
826	Set tabs or use the Table menu
827	cut and past
828	is not in the dictionary file and therefore might be spelt incorrectly
829	Formatting text
830	it must be given a name to identify it
831	None of these
832	spreadsheet software
833	numeric entries
834	Grammar errors
835	Arithmetic logic unit
836	Chip
837	All
838	CPU
839	C.P.U
840	ALU
841	None of these
842	Control unit

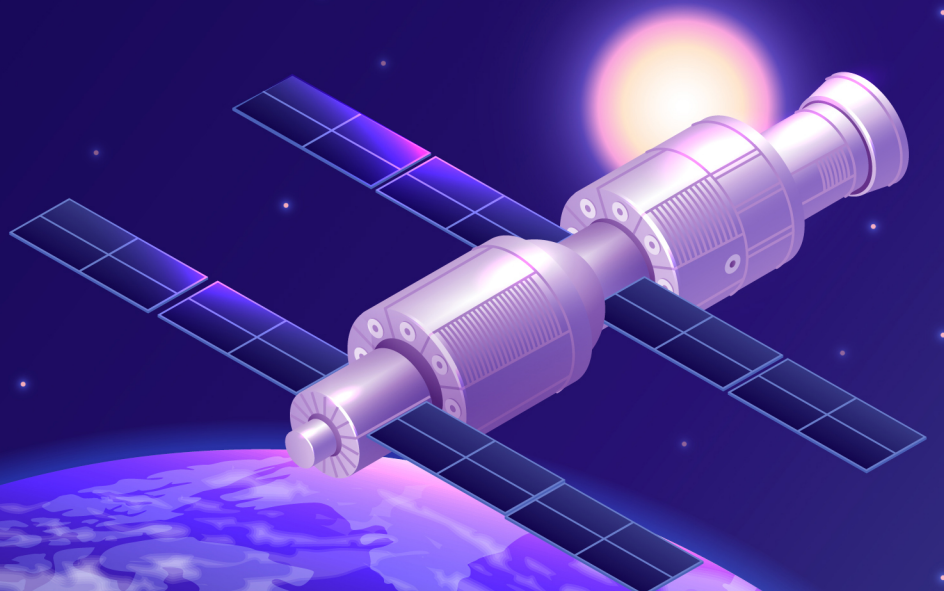
843	artificial
844	ALU, Control unit and Registers
845	Performs calculations and processing
846	Limited
847	None of these
848	All
849	Input, processing and ouptut
850	Logical function of ALU
851	Process
852	All
853	Output
854	All
855	Which is get to user from processor
856	ALU
857	ALU
858	Information
859	Include addition, subtraction, multiplication and division
860	Transforming input into output
861	Computer system
862	Address
863	ALU
864	A control unit and an arithmetic logic unit
865	Computers are very fast and can store huge amounts of data.
866	ALU
867	To read, interpret and process the information and instruction
868	Employee address
869	data
870	Information
871	Control unit
872	Data, information
873	computers are very fast and can store

	huge amounts of data.
874	to read, interpret and process the information and instruction
875	Executing
876	input
877	Analysing data or information
878	makes the information resulting from processing available for use
879	data
880	Arithmetic and Logic Unit
881	CPU
882	processing
883	Output
884	Numbers and alphabetical characters
885	Central Processing Unit
886	input
887	processing
888	input devices
889	control unit
890	input, processing, output, storage
891	does both calculations and logical comparisons
892	Main Memory and storage
893	microchip
894	CPU
895	both (a) and (c)
896	Both (b) and (c)
897	central processing unit
898	information
899	include addition, subtraction, multiplication, and division
900	data

Section-10

REMOTE SENSING

REMOTE SENSING IS THE ACQUISITION OF INFORMATION ABOUT AN OBJECT OR PHENOMENON WITHOUT MAKING PHYSICAL CONTACT WITH THE OBJECT, IN CONTRAST TO IN SITU OR ON-SITE OBSERVATION. THE TERM IS APPLIED ESPECIALLY TO ACQUIRING INFORMATION ABOUT THE EARTH AND OTHER PLANETS.



Section-10

Each Section has 100 Multiple Choice Questions (MCQ).
Each question has four choices. Student to Tick the correct answer.

Sr. No.	Question	A	B	C	D
901	Input, output, and processing devices grouped together represent a(n)	mobile device	information processing cycle	circuit board	computer system
902	An electronic device, operating under the control of information, that can accept data, process the data, produce output and store the results for future use	Input	Computer	Software	Hardware
903	Theof software contains lists of options and commands.	Menu bar	Tool bar	Title bar	None of these
904	MS. Office 2000 was developed by	Novel	Coral	Lotus Microsoft	Microsoft
905	Microsoft is an.....	Organization to manufacture a microchip	Organization to develop a software	Organization for micro engineering	Organization to manufacture hardware
906	A small arrow or blinking symbol on desktop is called a	Mouse	Logo	Hand	Cursor
907	Which of the following refers to the rectangular area for displaying information and running programme-	Desktop	Dialog Box	Menu	Window
908	A popular window environment window -3 launched by Microsoft in	1985	2000	1995	1990
909	Technique in link two computers is called	Internet	E-mail	E-prom	Interface
910	To increase or decrease a speed of mouse cursor, which option in need	Setting	Control	Control Panel	None of these
911	Windows Software was developed by	IBM	Apple corporation	Wipro	All of these
912	While on the desktop in Windows, what happens pressing F5 do?	Refreshes the screen	Opens help menu	Does nothing	Opens Search

913	Which of the following type of software is MS Window?	CUI	MUI	LUI	None of these
914	Which of the following tells us about used and free space available in a computer?	My Computer	My document	My briefcase	My search
915	Driver software does not need	Windows-95	DOS	3D	Photostyler
916	Windows-98 was developed in	1994	1998	2001	2004
917	What is close button?	window which is present at the end of title bar	like a small button	To click it opened dialogue box and document is closed	All of these
918 and..... Keys are used with the combination of other key for shortcut and other special functions.	Ctrl, Alt	Function, Toggle	Delete, Insert	None of these
919	Background of Screen is known as	Application	Window	Desktop	Frame
920	If Text was highlighted and Edit 'Copy' was clicked, what would happen?	Text would be copied from the document and placed in the clipboard	Text would be removed from the document and placed in the clipboard	Text from the clipboard would be placed in the document at the place where the cursor is blinking	Only b and c
921	At which button is Help Menu available?	End	Start	Turn Off	Restart
922	You can keep your personal files/folders in	My Documents	My folder	My files	My text
923	Various applications and documents are represented on the windows desktop by	Symbols	Labels	Icons	Graphs

924	Data that is copied from an application is stored in the	Driver	Terminal	Prompt	Clipboard
925	All the deleted files go to	Recycle bin	Task bar	Tool bar	My Computer
926	The rectangular area of the screen that displays a programme, data and/or information is a	Title Bar	Button	Dialog Box	Window
927	A Contains commands that can be selected	Pointer	Menu	Icon	Button
928	Text and graphics that have been cut or copied are stored in an area called the	Paste Board	Copy Board	Clip Board	Cutting Board
929	What is the significance of a faded (dimmed) command in pull-down menu ?	The command is not currently accessible	A dialog box appears if the command is selected	A help window appears if the command is selected	There are no equivalent keystrokes for the particular command
930	Generally, you access the recyclebin through an icon located	On the desktop	On the hard drive	On the short cut menu	In the properties dialog box
931	What menu is selected to cut, copy and paste ?	File	Edit	Tools	Table
932	What is a File?	A file is a selection of main storage used to store data.	A file is collection of information that has been given a name and is stored in secondary memory	A file is a part of a programme that is used to describe what the programme should do.	Floppy disks can only store data, not programs.
933	Deleted data remains on a disk until	The data is overwritten	The recycle bin is empty	A file compression utility is used	The disk is scanned

934	When you cut or copy information it gets place in the	Clipart	Clipboard	Intrenet	Mother board
935	The side bar in a window or word processor that has an arrow on both ends and a box in the middle that you use your mouse to move the pages up or down-	Scroll bar	Roll bar	Page bar	Box bar
936	Which is the graphical representation of an application ?	Windows 95	Windows Explorer	Icon	Task bar
937	To shrink a window to an icon	Open a group window	Minimise a window	Maximise a window	Restore a window
938	Some thing which has easily-understood instructions is said to be	Analog data	Digital data	Modem data	Watts data
939	The portion that shows all the choices you can make while working in a window is called the	Options	Table	Menu bar	Item bar
940	A (n) Contains commands that can be selected.	Pointer	Menu	Icon	Button
941	A (n) Is a small image that represents a program, an instruction, a file, or some other object.	Keyword	Interface	Menu	Icon
942	A.....is an icon on the desktop that provides a user with immediate access to a program or file.	Kernal	Buffer	shortcut	Spooler
943	Date and Time are available on the desktop at.....	Keyboard	Recycle bin	My computer	Task bar
944	A symbol on the screen that represents a disk, document or program that you can select.....	Keys	Caps	Icon	Monitor
945	To "maximize " a window means to	Fill it to capacity	Expand it to fit the desktop	Put only like files inside	Drag it to the Recycle bin
946	Easy to use	User friendly	Select	Helpful	Ever - ready

947	Choices are referred to as	Option	Exit	Boot	Folder
948	A place that a user can creat to store files.....	Cursor	Text	Folder	Boot
949	Commands at the top of a screen such as FILE-EDIT-FONT-TOOLS to operate and change things within programs.....	Menu bar	Tool bar	User friendly	Word Processor
950	To insert a copy of the clipboard contents, whatever was last cut or copied at the insertion point.....	Paste	Cut	Clip	Push
951	The command used to remove text or graphics from a document. The information is then stored on a clipboard so you can paste it.	Crop	Cut	Clip	Cart away
952	To move down a page in a document	Jump	Fly	Wriggle	Scroll
953	Screen that comes on when you turn on your computer that shows all the icons.....	Desktop	Face to face	Viewer	View space
954	Each On a menu performs a spacific action.	Client	Server	Node	Command
955	A menu contains a list of	Comman ds	Data	Objects	Report
956	Files are organized by storing them in	Tables	Database	Folders	Graphs
957 Is when the more power hungry components, such as the monitor and the hard drive are put in idle.	Hibernati on	Power down	Stand by mode	The shut down procedure
958	When you install a new program on your computer, it is typically added to the Menu.	all programs	select programs	start programs	desktop programs
959	A..... Contains buttons and menus that provide quick access to commonly used commands.	Menu bar	Tool bar	window	action bar
960	Which of the following menu type is also called a drop-down menu?	flyo-ut	cascading	pop-up	pull-down
961	Most application software today comes with an interface called a(n)	graphical used interface	character user interface	Icon user interface	button user interface

962 Shows the files, folder, and drives on your computer, making it easy to navigate from one location to another within the file hierarchy.	Microsoft office Internet Explorer	Windows Explorer	My computer	Folder Manager
963 are lists of commands that appear on the screen .	GUIs	Icons	Menus	Windows
964					
965	A(n) Uses pictures (called icons) and menus displayed on the screen to send commands to the computer system.	Command based user interface	GUI	API	system utility
966	The Allows you to access objects and start programs.	Default menu	XP menu	Start menu	Stop menu
967	"GUI" stands for	General Universal Interface	Graphical User Interface	Graphic Uninstall/install	General Utility Interface
968	Which of the following languages is more suited to a structured program?	PL/1	FORTRAN	BASIC	PASCAL
969	A computer assisted method for the recording and analyzing of existing or hypothetical systems is	Data transmission	Data flow	Data capture	Data processing
970	The brain of any computer system is	ALU	Memory	CPU	Control unit
971	Which of the following computer language is used for artificial intelligence?	FORTRAN	PROLOG	C	COBOL
972	The tracks on a disk which can be accessed without repositioning the R/W heads is	Surface	Cluster	Cylinder	None of these
973	Which of the following is the 1's complement of 10?	1	110	11	10
974	A section of code to which control is transferred when a processor is interrupted is known as	M	SVC	IP	MDR
975	Which part interprets program instructions and initiate control operations.	Input	Storage unit	Logic unit	Control unit

976	The binary system uses powers of	2	10	8	16
977	A computer program that converts assembly language to machine language is	Compiler	Interpreter	Assembler	Comparator
978	The time required for the fetching and execution of one simple machine instruction is	Delay time	CPU cycle	Real time	None of these
979	Which access method is used for obtaining a record from a cassette tape?	Direct	Sequential	Random	All of the above
980	A name applied by Intel corp. to high speed MOS technology is called	HDLC	LAP	HMOS	SDLC
981	The radian of a number system	Is variable	Has nothing to do with digit position value	Equals the number of its distinct counting digits	Is always an even number
982	The process of communicating with a file from a terminal is	Interactive	Interrogation	Heuristic	All of the above
983	The examination and changing of single bits or small groups of bits within a word is called	Bit	Byte	Bit manipulation	Bit slice
984	Which computer has been designed to be as compact as possible?	Mini	Super computer	Micro computer	Mainframe
985	Which method is used to connect a remote computer?	Device	Dialup	Diagnostic	Logic circuit
986	How many bit code is used by Murray code for TELEPRINTER machines.	4	5	9	25
987	The symbols used in an assembly language are	Codes	Mnemonics	Assembler	All of the above
988	A systems programming language for microcomputers in the Intel family is	PL/C	PL/CT	PL/M	PLA
989	A datum that indicates some important state in the content of input or output is	Sequence	Sentinel	SIO	Sibling
990	Which is a non-standard version of a computing language?	PROLOG	APL	Army	PL/1

991	Winchester Disk is	Stack Disk	Removable Disk	Flexibal Disk	None of these
992	The microcomputer, Intel MCS-80 is based on the widely used Intel	8080 microprocessor	8085 microprocessor	8086 microprocessor	8082 microprocessor
993	Which is a machine-oriented high-level language for the GEC 4080 series machines.	LOGO	SNOBOL	Babbage	ALGOL
994	The list of coded instructions is called	Computer program	Algorithm	Flowchart	Utility programs
995	An optical input device that interprets pencil marks on paper media is	O.M.R	Punch card reader	Optical scanners	Magnetic tape
996	Most important advantage of an IC is its	Easy replacement in case of circuit failure	Extremely high reliability	Reduced cost	Low power consumption
997	Data division is the third division of a _____ program.	COBOL	BASIC	PASCAL	FORTH
998	Which language was devised by Dr. Seymour Aubrey Papert?	APL	COBOL	LOGO	FORTRAN
999	A device designed to read information encoded into a small plastic card is	Magnetic tape	Badge reader	Tape puncher	Card puncher
1000	A hybrid computer uses a _____ to convert digital signals from a computer into analog signals.	Modulator	Demodulator	Modem	Decoder

Answers

901	computer system
902	Computer
903	Menu bar
904	Microsoft
905	Organization to develop a software
906	Cursor
907	Window
908	1990
909	Interface
910	None of these
911	IBM
912	Refreshes the screen
913	None of these
914	My Computer
915	Windows-95
916	1998
917	like a small button
918	Ctrl, Alt
919	Desktop
920	Text would be copied from the document and placed in the clipboard
921	Start
922	My Documents
923	Icons
924	Clipboard
925	Recycle bin
926	Window
927	Menu
928	Clip Board
929	The command is not currently accessible
930	On the desktop
931	Edit
932	A file is collection of information that has been given a name

	and is stored in secondary memory
933	The recycle bin is empty
934	Clipboard
935	Scroll bar
936	Icon
937	Minimise a window
938	Analog data
939	Menu bar
940	Menu
941	Interface
942	shortcut
943	Task bar
944	Icon
945	Expand it to fit the desktop
946	User friendly
947	Exit
948	Folder
949	Menu bar
950	Paste
951	Cut
952	Scroll
953	Desktop
954	Command
955	Commands
956	Folders
957	Stand by mode
958	all programs
959	Tool bar
960	pull-down
961	graphical used interface
962	My computer
963	Menus
964	command
965	Command based user interface

966	Start menu
967	Graphical User Interface
968	PASCAL
969	Data flow
970	CPU
971	PROLOG
972	Cylinder
973	1
974	M
975	Control unit
976	2
977	Assembler
978	CPU cycle
979	Sequential
980	HMOS
981	Equals the number of its distinct counting digits
982	Interrogation
983	Bit manipulation
984	Micro computer
985	Dialup
986	5
987	Mnemonics
988	PL/M
989	Sentinel
990	Army
991	Stack Disk
992	8080 microprocessor
993	Babbage
994	Computer program
995	O.M.R
996	Extremely high reliability
997	COBOL
998	LOGO
999	Badge reader
1000	Modem

Section-11

ROBOTICS



Robotics is an interdisciplinary field that integrates computer science and engineering. Robotics involves design, construction, operation, and use of robots. The goal of robotics is to design machines that can help and assist humans.

Section-11

Each Section has 100 Multiple Choice Questions (MCQ).
Each question has four choices. Student to Tick the correct answer.

Sr. No.	Question	A	B	C	D
1001	A group of magnetic tapes, videos or terminals usually under the control of one master is	Cylinder	Cluster	Surface	Track
1002	Any device that performs signal conversion is	Modulator	Modem	Keyboard	Plotter
1003	Codes consisting of light and dark marks which may be optically read is known as	Mnemonics	Decoder	Bar code	All of the above
1004	The first generation of computers available was based on the bit micro processors.	4	8	16	64
1005	The complete picture of data stored in database is known as	Record	Schema	System flowchart	DBMS
1006	A language which is close to that used within the computer is	High-level language	Assembly language	Low-level language	All of the above
1007	Which is a unit representing the no bits of discrete.	Baud	Byte	Bit	All of the above
1008	The device that can both feed data into and accept data from a computer is	ALU	CPU	Input-Output device	All of the above
1009	A modern digital computer has	Extremely high speed	Large memory	Almost unlimited array	All of the above
1010	Which of the following can store information in the form of microscopic pits on metal disks.	Laser disks	Tape cassettes	RAM cartridge	Punched cards
1011	A storage system for small amounts of data is	Magnetic card	Magnetic tape	Punched card	Optical mark reader
1012	Compilers and interpreters are themselves	High-level language	Codes	Programs	Mnemonics
1013	Which is a device that changes information into digital form?	Modem	Digitizer	Mouse	Light pen

1014	Which network is a packet switching network?	Ring network	LAN	Star network	EuroNET
1015	Symbolic languages were developed in	1962	1950	1974	1980
1016	When was Apple Macintosh II microcomputer introduced in the market?	1964	1970	1983	1986
1017	Control Unit of a digital computer is often called the	Clock	Nerve center	ICs	All of the above
1018	Human beings are referred to as Homosapiens. Which device is called Silico sapiens?	Monitor	Hardware	Robot	Computer
1019	The most important advantage of a video disk is	Compactness	Potential capacity	Durability	Cost effectiveness
1020	The software used to convert source program instructions to object instruction is known as	Compiler	Assembler	Interpreter	Language processor
1021	Backing storage is so named because it	is always kept at the back of the CP.U.	is always not kept at the back of the CP.U.	backs up the computer's main memory	lags behind the main memory
1022	The ASCII code for the character J is:	1001 0001	1001 1010	0100 1010	1010 0001
1023	Off-line operation is the operation of devices without the control of	Memory	CPU	ALU	Control unit
1024	What is meant by a dedicated computer?	Which is used by one person only	Which is assigned one and only one task	Which uses on kind of software	Which is meant for application software only
1025	Which of the following is the user programmed semiconductor memory?	SRAM	DRAM	EPROM	All of the above
1026	The two kinds of main Memory are:	Primary and secondary	Random and sequential	ROM and RAM	All of the above

1027	Programs designed to perform specific tasks is called known as	System software	Application software	Utility programs	Utility programs
1028	What is the name given to the weapons which use computerised guidance system?	Guided weapons	Smart weapons	Dumb weapons	Dumb weapons
1029	Conversion of binary number 1010101000010111 to hexadecimal number is	D8F916	D8F916	AA1716	D9F816
1030	Which of the following holds data and processing instructions temporarily until the CPU needs it?	ROM	control unit	main memory	coprocessor chips
1031	A multi programming system is one that can	run very fast	share hardware resources with many programs simultaneously	compute many programs simultaneously	use many operating systems
1032	The language that is an input for statement translation is called	Assembly language	Source language	High-level language	Object language
1033	A high speed device used in CPU for temporary storage during processing is called	A register	A bus	A databus	All of the above
1034	The first electronic digital computer contained?	Electronic valves	Vacuum tubes	Transistors	Semiconductor memory
1035	Name the two persons who were the first to develop a model of the microprocessor chip.	Marcian Ted Hoff	Victor Poor	Harry pyle	Both (b) and (c)
1036	EBCDIC can code up to how many different characters?	16	32	64	256
1037	Who is credited with the idea of using punch cards to control patterns in a weaving machine?	Pascal	Hollerith	Babbage	Jackquard
1038	Which 32-bit microprocessor is used in IBM's PS/2 model-80 computer?	8088	80286	80386	80486
1039	The memory which is ultraviolet light erasable and electrically programmable is	ROM	PROM	RAM	EPROM

1040	What is the name of the computer which was first used for programming and playing of music?	ELLIAC	ENIAC	UNIVAC	All of the above
1041	Who is the creator of the PASCAL language?	Niklaus Wirth	Dijkstra	Donald Knuth	Basic Pascal
1042	When was punched-card equipment used for the first time to process the British census?	1910	1911	1907	1914
1043	A hashing scheme is used with	sequential file organization	direct file organization	indexed sequential file organization	partitioned file organization
1044	The time taken for the read/write head to move to the correct track on the magnetic disk is called	epoch delay	delay	seek time	approach time
1045	A computer has a 1024K memory. What does the letter K stand for	Kilometre	Thousand	1024	MB
1046	Computer instructions written with the use of English words instead of binary machine code is called	Mnemonics	Symbolic code	Gray code	Op-code
1047	The system unit of a personal computer typically contains all of the following except:	microprocessor	disk controller	serial interface	modem
1048	Which of the following are the two main components of the CPU?	control unit and registers	registers and main memory	control unit and ALU	ALU and bus
1049	A directly accessible appointment calendar is a feature of a _____ resident package.	CPU	Memory	Buffer	ALU
1050	1024 bytes represent a	Megabyte	Gigabyte	Kilobyte	None of the above
1051	Which type device is a piece of equipment that receives information from a CPU?	Input	Output	CPU	Memory
1052	When was the IBM XT microcomputer released in the market?	1970	1971	1987	1986

1053	Which is true for the digital computer?	It is less accurate than the analog computer	It represents the decimal numbers through a string of binary digits	It is used primarily in scientific applications	Both (a) and (c)
1054	Which of the following is used for serial access storage only?	RAM	Magnetic tape	Magnetic tape	Core memory
1055	A memory space used for the temporary storage of data is	PROM	SAM	Scratchpad storage	Buffer
1056	When did arch rivals IBM and Apple Computers Inc. decide to join hands?	1984	1978	1990	1991
1057	To locate a data item for storage is	Feed	Field	Database	Fetch
1058	When an input electrical signal A=10100 is applied to a NOT gate, its output signal is	1011	1011	10101	101
1059	The first practical commercial typewriter was invented in 1867 in the United States by	Christopher Latham Sholes	Carlos Glidden	Samuel Soule	All of the above
1060	Large computer system typically uses:	Line printers	Ink-jet printers	Dot-matrix printers	Daisy wheel printers
1061	The heart of any computer is the	CPU	Memory	I/O Unit	Disks
1062	What do you call a portable computer?	Laptop	Booktop	RAM	Computer
1063	What do you do if your computer dies/malfunctioning?	Reboot (Restart)	Shut Down	Recovery CD and Recover your system	Call a person to fix it
1064	What do you use to type?	Mouse	Keyboard	CPU	ROM
1065	What memory below is the largest?	1TB	10GB	500 Bytes	500 GB
1066	What do you use to read CDs/DVDs?	DVD ROM	CD ROM	CD DVD PLAYER	All of above
1067	Which line do you use to connect to the internet?	Phone Line	Mouse	Ethernet	Motherboard

1068	What do you use to connect to the internet?	CPU	Mouse	Modem	Software
1069	What Is an icon?	You play with it	You click to start something	You ignore it	All of above
1070	What do you use to click stuff?	RAM	CPU	Keyboard	Mouse
1071	Dose software comes with a product key?	True	False		
1072	What type of device is a computer monitor?	Input	Output	Software	Storage
1073	What type of devices are computer speakers or headphones?	Input	Output	Software	Storage
1074	A computer tower is NOT:	A CPU	Hardware	the "Heart" of the computer	A peripheral
1075	What type of device is a computer printer?	Input	Output	Software	Storage
1076	What type of device is a 3 1/2 inch floppy drive?	Input	Output	Software	Storage
1077	What type of device is a computer mouse?	Input	Output	Software	Storage
1078	A report generator is used to	update files	print files on paper	data entry	All of the above
1079	Which of the following is not a logical data-base structure?	tree	relational	network	chain
1080	Express 8192 in K units.	8 x 103 K	8.192 k	8K	All of the above
1081	The functional capacity for LSI devices is	1 to 11 gates	12 to 99 gates	100 to 10,000 gates	more than 10,000 gates
1082	What is the 2's-complement representation of -24 in a 16-bit microcomputer?	0000 0000 0001 1000	1111 1111 1110 0111	1111 1111 1110 1000	0001 0001 1111 0011
1083	Which gates is known as universal gate?	NOT gate	AND gate	NAND gate	XOR gate

1084	_____ is an abbreviation for binary digit.	0 and 1	bingit	base	bit
1085	Conversion of hexadecimal number 1D7F16 to a decimal number is	755110	877110	555710	778110
1086	Parallel adders are	combinational logic circuits	sequential logic circuits	both of the above	All of the above
1087	A microcomputer is a computer that uses a _____ for its CPU	chips	registers	microprocessor	vacuum tube
1088	Which command of MS-DOS is used to copy only files that have been modified on or after the date you specify?	XCOPY /D : date	COPY/D : date	COPY/M	XCOPY/V
1089	While working with MS-DOS, which command is used to restore files that were backed up using the BACKUP command?	COPY	DISKCOPY	RESTORE	STORE
1090	The term TSR is an abbreviation for:	Terminate Stay Ready	Testing System Read	Terminal Still Ready	Terminate Stay Resident
1091	Using the _____ switch causes FDISK to display the partition status of your hard disk without executing FDISK.	/show	/display	/status	/part
1092	Shortcut Key to center a paragraph is:	Ctrl + J	Ctrl + J	Ctrl + L	Ctrl + R
1093	Shortcut Key to justify a paragraph is:	Ctrl + E	Ctrl + C	Ctrl + J	Ctrl + P
1094	Shortcut Key to move next workbook is:	Ctrl + F6	Alt + F6	Shift + F6	F6
1095	Shortcut Key to paste a cell is:	Ctrl + P	Ctrl + X	Ctrl + V	Ctrl + Z
1096	Shortcut Key to open old workbook is:	Ctrl + F	Ctrl + O	Ctrl + N	Ctrl + Y
1097	Shortcut Key for double line spacing is:	Ctrl + 1	Ctrl + 3	Ctrl + 2	Ctrl + 4
1098	Shortcut Key for renaming file and folder is:	F3	F1	F4	F2
1099	Which of the following is loaded for CD-ROM support?	VLM.EXE	CDDEX.EXE	DOSKEY .EXE	MSCDEX.EXE

1100	Suppose you had an incurable computer virus and decided to wipe out all the data and partitions on your hard drive and reformat. What is the order in which you must delete the partitions?	Extended, Logical, Primary	Primary, Extended, Logical	Logical, Extended , Primary	Logical, Primary, Extended
------	---	----------------------------------	----------------------------------	--------------------------------------	----------------------------------

Answers

1001	Cluster
1002	Modulator
1003	Bar code
1004	8
1005	Schema
1006	Low-level language
1007	Baud
1008	Input-Output device
1009	All of the above
1010	Laser disks
1011	Magnetic card
1012	Programs
1013	Digitizer
1014	EuroNET
1015	1950
1016	1983
1017	Nerve center
1018	Computer
1019	Potential capacity
1020	Language processor
1021	backs up the computer's main memory
1022	0100 1010
1023	CPU
1024	Which is assigned one and only one task
1025	EPROM
1026	ROM and RAM
1027	Application software
1028	Smart weapons
1029	AA1716
1030	main memory
1031	share hardware resources with many programs simultaneously
1032	Source language

1033	A register
1034	Electronic valves
1035	Both (b) and (c)
1036	256
1037	Jackquard
1038	80386
1039	EPROM
1040	ELLIAC
1041	Niklaus Wirth
1042	1911
1043	direct file organization
1044	seek time
1045	1024
1046	Symbolic code
1047	modem
1048	control unit and ALU
1049	Memory
1050	Kilobyte
1051	Output
1052	1987
1053	It represents the decimal numbers through a string of binary digits
1054	Magnetic tape
1055	Scratchpad storage
1056	1991
1057	Fetch
1058	1011
1059	All of the above
1060	Line printers
1061	CPU
1062	Laptop
1063	Shut Down
1064	Keyboard
1065	1TB
1066	DVD ROM
1067	Phone Line
1068	Modem

1069	You click to start something
1070	Mouse
1071	True
1072	Output
1073	Output
1074	A peripheral
1075	Output
1076	Storage
1077	Input
1078	print files on paper
1079	chain
1080	8K
1081	100 to 10,000 gates
1082	1111 1111 1110 1000
1083	NAND gate
1084	bit
1085	755110
1086	combinational logic circuits
1087	microprocessor
1088	XCOPY/D : date
1089	RESTORE
1090	Terminate Stay Resident
1091	/status
1092	Ctrl + J
1093	Ctrl + J
1094	Ctrl + F6
1095	Ctrl + V
1096	Ctrl + O
1097	Ctrl + 2
1098	F2
1099	MSCDEX.EXE
1100	Logical, Extended, Primary

Section-12

Supercomputer



पारस इशवाके

A supercomputer is a computer with a high level of performance as compared to a general-purpose computer. The performance of a supercomputer is commonly measured in floating-point operations per second instead of million instructions per second. Since 2017, there are supercomputers which can perform over 10^{17} FLOPS.

Section-12

Each Section has 100 Multiple Choice Questions (MCQ).
Each question has four choices. Student to Tick the correct answer.

Sr. No.	Question	A	B	C	D
1101	A _____ boot is when DOS is restarted without turning off the computer.	warm	reboot	shutdown	system up
1102	How many digits of the DNIC (Data Network Identification Code) identify the country?	first three	first four	first five	first six
1103	Frames from one LAN can be transmitted to another LAN via the device	Router	Bridge	Bridge	Modem
1104	What are the most commonly used transmission speeds in BPS used in data communication?	300	1200	2400	9600
1105	What is the default subnet mask for a class C network?	127.0.0.1	255.0.0.0	255.255.0.0	255.255.255.0
1106	Now-a-days computers all over the world can talk to each other. Which is one of the special accessories essential for this purpose?	Keyboard	Modem	Scanner	Fax
1107	Which file transfer protocol uses UDP?	NFS	TELNET	TFTP	FTP
1108	A network designer wants to connect 5 routers as point-to-point simplex line. Then the total number of lines required would be	5	10	20	32
1109	What is the first octet range for a class A IP address?	1 - 126	192 - 255	192 - 223	1 - 127
1110	What is the first octet range for a class B IP address?	128 - 255	1 - 127	192 - 223	128 - 191
1111	Which of the following items is not used in Local Area Networks (LANs)?	Computer	Modem	Printer	Cable
1112	Byte = how many bits ?	16 bits	8 bits	32 bits	64 bits

1113	What in this world uses MPEG-2 and MPEG-4 digital compression technology and is transmitted using INSAT 4A at 83 degrees E ?	Dish tv	Videocon	Airtel	TATA Sky
1114	Grace Murray Hooper wrote the first_____ in 1952?	Bug	BIOS	Compiler	DOS
1115	What is Google's headquarters nicknamed ?	GooglePi ay	GooglePlex	GooglePI us	All of above
1116	Connect SPSS , LEXMARK , Pwc and the sale of Thinkpad in 2005.	IBM	Acer	Dell	Lenevo
1117	What was created by Eduardo Saverin ,Chris Huges , Dustin Muzkovitz and other guy?	Twitter	Gmail	Faceboo k	All of above
1118	X was officially launched on MTV on May 12, 2005.The detailed launch and game information divulged later that month at the Electronic Entertainment Expo.What is X ?	Xbox 260	Xbox 300	Xbox 360	Xbox 500
1119	Which brand in this world created the Whispernet for its trademark device?	Flipkart	Amazon	Ebay	Sneapdeal
1120	Chrome :: Google :::: Firefox :: _____ ?	Mozilla	internet	All of above	None of the above
1121	Who has developed AISHA a competitor for SIRI in the market?	Xolo	Micromax	Sony	Samasung
1122	What was developed by Justin Frankel, Dmitry Boldyrev, and Shiva Ayyadurai and its popularity grew quickly, along with the developing trend of MP3 file sharing.	VLC	Windows player	Winamp	All of above
1123	Leopard, Snow Leopard, Lion are all versions of which famous OS?	Apple	Mac OS	Chrome	None of the above
1124	He has been heading Cisco since 1995 ?	John Martin	John Methew	John Chambers	Charlie
1125	Series 40 is a mobile OS by which company?	Sony	Apple	Nokia	Samasung
1126	Which company was founded by John Bullough Lansing in 1946 ?	BPL	JBL	APL	SPL
1127	It was also ranked as the No. 1 for customer satisfaction within the	Virgin Mobile	Airtel Mobile	Relience	Videocon

	first ear of its launch with an overall score of over 95%. It have also been adjudged the 'Buzziest Brands of 2009' i.e. the most searched for brands by surfers, in a survey carried out by a leading online portal in India!				
1128	Denis Ritche created C and other computer language.Which is the other one?	OS	DOS	LINUX	UNIX
1129	Who founded NEXT computer corp?	Steve Hunt	Steve Jobs	Steve Mathew	Steve Anderson
1130	It looks like a dog , but it is a robot.Identify the robot created by Sony ?	AIBO	ABIO	AIOB	OIAB
1131	Which is the computer language developed by John Backus ?	FOTRAR N	FORTRAN	TFORAR N	None of the above
1132	Expand VoIP	Video Over Internet Protocol	Voice Over Internet Protocol	Voice Over Internet Proto	Voice Omega Internet Protocol
1133	What is Android 4.0 commonly called ?(hint:What we would like to eat)	Kitkat	Icecream Sandwich	Lollypop	Jallybean
1134	Which software was developed at the Cowpland Research Laboratories by Michael Cowpland	Photosho p	Corel Draw	I Design	Paint
1135	Who is the Father of Free Software Movement ?	Richard Jobs	Richard Stallman	Richard Steve	Alex Stallman
1136	Sean _____ and Sean _____ created Napster.Name them	Sean Parex and Sean Fanning	Sean Parker and Sean Fannel	Sean Parker and Sean Fanning	Sean Parker and Sean Fanes
1137	Which game was created by Sami Jarvi ? (hint:its a Person shotter game)	MIN PAYNE	MAX PAY	MAX PAYNE	MAX PAYE
1138	With which indain mobile maker did intel make xolo ?	Intel	NOKIA	Karbons	LAVA
1139	What is macsyma, a programming language used for?	COBOL	Algebra	C++	Pascal

1140	This IT company was initially set up as a manufacturer of vegetable ghee, vanaspati, refined oils including salad oil in Maharashtra under the trade names of Kisan, Sunflower and Camel.ID the company.	WIPRO	KISAN	ANKUR	SAFFOLA
1141	He is the President of National Ethical Hackers' Association(NEHA),India.He has co-authored a book "Software Hacking" with Ankit Fadia.Orissa Police has consulted him on a few online security related cases.He was awarded the "Youth Icon of Orissa 2009" by RedFM 93.5.ID him	Nishant Das Patnaik	Nishant Das Pathek	Nishant Das Patnaik	Nishant Patnaik
1142	_____ is a web-based 3D satellite mapping tool similar to google earth developed by ISRO.It is based on TerraExplorer software developed by Skyline Systems.	Bhuvan	GooglePlex	Ganga	Bhavan
1143	He is the founder of Info Edge,a company which runs Naukri.com portal .ID him	Sanjeev Pateel	Sanjeev Bikhchandani	Sanjeev Mishra	None of the above
1144	Identify the person associated with this who is the founder of Intel	Robert Noyce	Robert Noy	Robert walker	None of the above
1145	Web OS, is a mobile operating system that was earlier owned by HP.It has been acquired by which company now ?	Sony	LG	Samsung	Videocon
1146	When is the World Backup Day celebrated (March 31, December 31, June 1)	March 3rd	March 1st	March 31st	March 27th
1147	Born : January 30, 1925. Died: July 2, 2013, American engineer and inventor who changed computing for life. Who ?	Douglas Engel	Douglas Engelbert	All of above	None of the above
1148	What is 'S' is SRAM ?	Static	System	Stategic	None of the above
1149	EOS is a product by which company ?	nikon	Canon	LG	SONY

1150	"Keep Moving" is the tagline of which product? (model no wasn't required)	Blackberry S10	Blackberry Z5	Blackberry Z10	Blackberry Z7
1151	Who developed the first compiler for a programming language in 1952 ?	Grace Hopper	Murray Hopper	Grace Murray Hoges	Grace Murray Hopper
1152	Webkit is from which famous recently released browser?	Google Chrome	Google PLUS	Google	None of the above
1153	Which celebrity became the first Indian to cross 1 million follower mark on Twitter ?	Salim Ali	A R Rahman	Lata Mangeshkar	Shraddha Kapoor
1154	Which site makes users copy another persons photos and put them on instagram as their own?	Instasubah	Instalive	Instasham	Instarat
1155	nexGTV is a mobile application,which provides access to live TV channels and video on demand on handsets. This app allowed people to watch videos of one of the largest events in human history this year. Which event ?	Maha Kumbh Mela	Pushkar Mela	Shiv-ratri Mela	Janmasthan Mela
1156	Which famous company did Sanjay Mehrotra form, headquartered at Milpitas, california, this company produces what are today known as pendrives?	Intex	Sandisk	Hp	iball
1157	In the world of books what is the full form of ISBN ?	Initiative Standard Book Number	Inter Standard Book Number	International Standard Book Number	None of the above
1158	We all say Giga bye. Now this is 10 to power how much ?	9	15	7	21
1159	In which famous indian directors memory did Google have this doodle.	Sanjeev Pateel	Satyajit Ray	Sanjeev Mishra	Satyajit Roy
1160	What is Samsung's answer to Siri ?	S Voice	Z Voice	A Voice	N Voice
1161	Pranay Chulet, is the founder and CEO of which online classifieds	Quickr	OLX	Facebook	Twitter

	portal launched the website in 2008 in India ?				
1162	Bloodline Club, a initiative for blood donation was launched by which famous Indian mobile operator?	Reliance	Vodafone	Tata Docomo	Airtel
1163	Which motion sensing input device, stems from early work on the EyeToy, a webcam-based controller for the PlayStation 2 conceived in 1999 and released in 2003 ?	Xbox 500	Playstation	Xbox 360	Playstation Move
1164	Which company changed its strategy in November 2009 by changing the question asked the users for status updates from "What are you doing?" to "What's Happening?"	Google+	Twitter	Facebook	Linkedin
1165	Datacash, comes from which company ?	Credit Card	Buisness Card	Mastercard	Visa
1166	Name the TCS initiative which uses mobile phones and sensor technology to give personalized advice to farmers	M-Agro	M-Krishi	E-Krishi	E-Ago
1167	Which company did BSNL tie up with to come out with a range of tablets ? (Samsung , Pantel , Aakash)	samsung	Aakash	Pantel	HP
1168	If 10 to the power 3 is Kilobyte . Then what is 10 to the power 24 [hint: it is extreme] (Picabyte, Petabyte , Yottabyte)	Yottabyte	Picabyte	Petabyte	None of the above
1169	French word for 'courriel' . How do we know it ?	Letter	Draft	e-mail	None of the above
1170	Which company was founded by Akio Morita and Masaru Ibuka?	Motorolla	Sony	Nokia	Apple
1171	Yammer was acquired by which company in 2012 ?	yahoo	Twitter	facebook	Microsoft
1172	Which educational institute was founded by Vijay K Thandani and Rajendra S Pawar?	NIFT	NIFD	NIIT	None of the above

1173	It was originally created by Phil Katz in 1989 and was first implemented in PKWARE.Identify.	.zip	zip	.zop	zeep
1174	Meg Whitman is the Present CEO of which famous compay?	Micromax	Sony	Apple Inc.	HP
1175	It was initially called Oak. it went by the name Green later, and was later renamed what?	C++	C	Java	None of the above
1176	Yahoo has partnered with which company to help Yahoo mail users attach files easily and quickly ?	Inbox	Dropbox	Spam	None of the above
1177	Pulse' is a News Reader App acquired by Which tech giant ?	yahoo	Scoop	Linkedin	Gmail
1178	Which company has recently launched the 'Cup of Coffee' campaign to demonstrate to small business owners how easy it is to built websites ?	First cry	Beebay	Godaddy	None of the above
1179	Which global company has partnered with small companies in India to build several technologies	hot	Google	Rediff	Yahoo
1180	Company started by Kunal Bahl and Rohit Bansal?	Flipcart	Fashion and you	Snapdeal	ebay
1181	Current CEO of HCL? (options provided	Kiran Yadav	Punit Dave	Aashutos h Gor	Anant Gupta
1182	According to a Google 2012 study which movie topped the 'most searched movie in India' category ?	Bunty aur Bubbly	Pipli live	Ek Tha Tiger	None of the above
1183	"Just spent amazing time with Colbert?" Is he sane? " which former American president's tweet?	Waren Buffet	Obama	Bill Clinton	None of the above
1184	MobiCash Easy is mobile wallet offered by which major bank in India?	PNB	SBI	HDFC	ICICI
1185	On ebay census of most online shoppings.Which city topped?	Gujrat	Mumbai	New Delhi	Bangluru

1186	It is named after former American NBA player Larry Bird. What is being spoken about ?	Google Plus	Gmail	Facebook	Twitter logo
1187	What is the full form of ENIAC ?	Electric Number Integration and Computer	Electronic Numerical Integrator and Computer	Electronic number Integration and Computer	None of these
1188	What in the world of computers was initially designed to prevent phosphor burn-in on CRT and plasma computer monitors?	Screen Saver	Windows player	Winamp	Windows
1189	What do you call a person who spends a great deal of his time on computers ?	Mouse	Mouse Potato	Windows 7	Keyboard
1190	Which company in 2013 launched a tablet named 'FonePad' ?	Lenovo	Asus	Oppo	htc
1191	The codename of this was emerald sea, named after the given painting. What ?	Yahoo+	Google	Google +	None of these
1192	In 1979 DEC and Intel joined forces to come up with the DIX Standard, and the publication was called the _____ Bluebook.	Extranet	Enternate	Ethernet	None of these
1193	This was invented in 1994 by Toyota's Subsidiary, Denso Wave. It's purpose was to track vehicles during manufacturing. How do we know it today?	MP Code	QR Code	SV Code	PH Code
1194	With which company would you associate the name TIM COOK?	Microsoft	HTC	Apple Inc.	Samsung
1195	Expand LED.	Light Expand Diode	Light Emitting Diode.	Light Emission Diode	None of the above
1196	Funbook is the tablet from which company?	Gionee	Lenovo	Micromax	Blackberry
1197	In India, DOCOMO is a part of which group?	Airtel	Vodafone	Idea	TATA
1198	What term was coined by Ericsson in 1997 to describe its GS 88 "Penelope" concept?	Phone	Android phone	Smart phone	Tablet

1199	Android is to Google as _____ is to Microsoft ?	Windows.	DOS.	Linux.	Unix
1200	What name do we know the Smart watch from Samsung?	Samsung galaxy	Samsung Gear s	Samsung Gear (Altius)	None of these

Answers

1101	warm
1102	first three
1103	Bridge
1104	9600
1105	255.255.255.0
1106	Modem
1107	TFTP
1108	10
1109	1 - 126
1110	128 - 191
1111	Modem
1112	8 bits
1113	TATA Sky
1114	Compiler
1115	GooglePlex
1116	IBM
1117	Facebook
1118	Xbox 360
1119	Amazon
1120	Mozilla
1121	Micromax
1122	Winamp
1123	Mac OS
1124	John Chambers
1125	Nokia
1126	JBL
1127	Virgin Mobile
1128	UNIX
1129	Steve Jobs
1130	AIBO
1131	FORTRAN
1132	Voice Over Internet Protocol
1133	Icecream Sandwich
1134	Corel Draw
1135	Richard Stallman

1136	Sean Parker and Sean Fanning
1137	MAX PAYNE
1138	LAVA
1139	Algebra
1140	WIPRO
1141	Nishant Das Patnaik
1142	Bhuvan
1143	Sanjeev Bikhchandani
1144	Robert Noyce
1145	LG
1146	March 31st
1147	Douglas Engelbert
1148	Static
1149	Canon
1150	Blackberry Z10
1151	Grace Murray Hopper
1152	Google Chrome
1153	A R Rahman
1154	Instasham
1155	Maha Kumbh Mela
1156	Sandisk
1157	International Standard Book Number
1158	9
1159	Satyajit Ray
1160	S Voice
1161	Quickr
1162	Tata Docomo
1163	Playstation Move
1164	Twitter
1165	Mastercard
1166	M-Krishi

1167	Pantel
1168	Yottabyte
1169	e-mail
1170	Sony
1171	Microsoft
1172	NIIT
1173	.zip
1174	HP
1175	Java
1176	Dropbox
1177	Linkedin
1178	Godaddy
1179	Yahoo
1180	Snapdeal
1181	Anant Gupta
1182	Ek Tha Tiger
1183	Bill Clinton
1184	SBI
1185	New Delhi
1186	Twitter logo
1187	Electronic Numerical Integrator and Computer
1188	Screen Saver
1189	Mouse Potato
1190	Asus
1191	Google +
1192	Ethernet
1193	QR Code
1194	Apple Inc.
1195	Light Emitting Diode.
1196	Micromax
1197	TATA
1198	Smart phone
1199	Windows.
1200	Samsung Gear (Altius)

Section-13

TELEMEDICINE



Telehealth is the distribution of health-related services and information via electronic information and telecommunication technologies. It allows long-distance patient and clinician contact, care, advice, reminders, education, intervention, monitoring, and remote admissions

Section-13

Each Section has 100 Multiple Choice Questions (MCQ).
Each question has four choices. Student to Tick the correct answer.

Sr. No.	Question	A	B	C	D
1201	Motorola Mobility is a company owned by which Technological giant?	Lenovo.	Sony	Samsung	None of the above
1202	Tag,Wall,Post,Poke are all features of which Website?	Google.com	Facebook.com	Orkut.com	Twitter.com
1203	Lumia is the range of Smartphones from which company?	Apple	Airtel	Relience	Nokia Inc.
1204	On Which Google product did 'Oppa Gangnam style' & 'Kolaveri Di' achieved millions of views?	Youtube	Video Player	Media Player	None of these
1205	Brave and Oz are spinoffs of which never ending game?	Counter-strike	Candy crush	Temple Run	Subway
1206	What is the version 4.4 of Android OS called?	lollypop	candy	ice cream sandwich	Kitkat
1207	Storm,Tour,Style & Z10 are all products of which company?	BlackBerry.	Apple	Intel	None of the above
1208	The Stoag and Bliss were computer viruses that were aimed at which operating systems?	xp	Linux	OS	Windows
1209	What is the process of affecting the visibility of a Website or a Web page in a search engine's "natural" or un-paid ("organic") search results?	Bring Your Own Device	Search Engine Optimization(SEO)	Both (A) & (B)	None of these
1210	This software company gets its name form Cowpland research Laboratory,after the name of the company's founder,Dr.Michael Cowpland.What?	I-Design	paint	photoshop	Corel
1211	What is the full form of DRM in Digital World	Digital Rights Management	Digital Radio Mondiale	Divisional Railway Manager	None of these

1212	According to wikipedia, this involves various aspects of farm management such as plowing land, planting, growing and harvesting crops, harvesting trees and bushes, and raising livestock. What ?	Farmville	Subway	Both (A) & (B)	None of these
1213	Which was the first car maker to integrate Apple's Siri personal assistant into its vehicles?	GM	Audi	BMW	Volvo
1214	It is a web browser developed by Apple Inc. and included with the Mac OS X and iOS operating systems. Identify?	Chrome	Opera	Safari	Mozilla Firefox
1215	"Lean In: Women, Work and the Will to Lead" is a book by Sheryl Sandberg, the COO of which company ?	Twitter	Facebook	YouTube	None of these
1216	"The Human Network" is the advertising campaign of which global MNC ?	Cisco	Microsoft	IBM	None of these
1217	What is this device called: it was used to watch movies nearly 15-20 years back, it was big than today's CD-ROMs?	DVD	VCR	VCD	None of these
1218	What is Mozilla's online payment application called?	MozPay	Mozilla Play	Mopay	None of these
1219	Mozilla and which famous Korean telecom giant is collaborating to produce Mozilla's next generation web browser SERVO?	Intel	BlackBerry	Samsung	Sony
1220	The website Symbolics.com was in the news recently. What is special about this website ?	Last registered domain	First registered domain	Not registered domain	Second registered domain
1221	Which company has been named as the official IT consulting partner of the New York City race, the flagship NYC Half 2013 ?	TCM	TCS	Above (A) & (B)	None of these
1222	In the world of Gaming we have MMOSG. What does SG stand for ?	Special Gaming	Synchronous Gaming	Social Gaming	None of these

1223	Whose DTH signals are transmitted using MPEG-2 digital compression technology, from the satellite INSAT 4A at 83.0 degrees East ?	Airtel digital TV	Videocone D2H	GTPL	Tata Sky
1224	It is the set of rules that defines the combinations of symbols that are considered to be a correctly structured document or fragment in that language. (He gave the clue ' _____ error')	Syntax errors	Internal errors	Semantic errors	Logical errors
1225	Which famous software suite was originally created by StarOffice?	Staroffice	Openoffice	Officesuit	None of these
1226	Which famous utility was started by Drew Houston, the idea for which he conceived while at MIT?	Emailbox	Paytm	Dropbox	None of these
1227	The _____ tells the computer how to use its components.	utility	application	operating system	network
1228	The transfer of data from a CPU to peripheral devices of computer is achieved through _____	Modems	Computer ports	Interfaces	Buffer memory
1229	Repair for known software bug, which is generally available free of cost on internet is called _____	Version	Patch	Tutorials	FAQ
1230	What is backup?	Connect his network to more component.	Copy to save a data from original source to other destination	Filter on old data from new data	Access data from tape
1231	The _____ manual tells you how to use a software programme	Documentation	Programming	User	Technical
1232	Linux is an example of ...	Freeware	Open source software	Shareware	Complimentary
1233	The physical structure of computer is called a _____	Hardware	software	keyboard	memory
1234	Generally which software uses to keep record of data?	Database software	Word processing software	Operating system	Utility software
1235	To work on a computer mainly we need _____	hardware	software	A and B	None of these
1236	When was Unix developed?	1950	1969	1955	1960

1237	Basic language of Unix is	Cobol	Basic	Assembly	Java
1238	What is Linux?	An operating system	A software	A site	A graphics
1239	What was created by Dr. August Dvorak to replace the QWERTY version?	Keyboard	Touch Screen	Scaneer	None of these
1240	Which of the following is commonly called the IC?	Ink case	Image controller	Integrated Circuit	None of these
1241	The headphones used in computer are the example of what type of device?	Input	Output	Storage	All of these
1242	Find the odd one in following...	Tablet	Phone	Printer	None of these
1243	What is the full form of .png?	Portable network graphics	Phone not Graphics	Picture network Graphics	None of these
1244	Which of this is not an operating system?	MS office	Windows 8	Windows 7	Windows Vista
1245	Which Indian actress endorses the Sony digital cameras?	Kareena Kapoor	Priyanka chopara	Dipika Padukone	Alia Bhatt
1246	What is the full form of Wi-Fi?	Wireless Firewall	Wireless Fidelity	Wireless Finder	None of these
1247	Cleartrip.com, Yatra.com, and Makemytrip.com help in online bookong for what?	Movie Tickets	Air Tickets	Cricket match tickets	All of these
1248	Which one of this is a predictive text technology used in mobile phones?	T8	T9	T10'	T5
1249	If in. is the country code for india, for which country is .sg used for?	Swedan	Singapore	Switzerland	Sydney
1250	What is the character limit for a tweet that you can post on twitter.com?	140 Characters	120 Characters	99 Characters	160 Characters
1251	To quit the view menu is.....	Select exit from the file menu	Choose close from the menu	Choose close from the file menu	None of these
1252allows you to accurately set the layout of the document.	The scroll bar	The tool bar	The menu bar	The ruler bar

1253	There are large number of templettes that are provided by Microsoft word is used for.....	The templettes are for generatin g business documen ts	They have many built in formatting features	The user can add his own to the existing list	All of these
1254	To display a toolbar.....	Select toolbar from view menu	Choose customize from toolbar	Choose customize from toolbar	Select toolbar from slide view
1255	In order to open an existing document,you can click on.....	File/Open	None of these	Edit/Open	View/Open
1256	To insert a tab character in cell...	Press Shift+Tab	Press ALT+TAB	Press CTRL+ALT +TAB	Press CTRL+TAB
1257	To find and replace text,click on.....menu.	View	Edit	file	Non of these
1258	. In MS-WORD every command is available in.....	Letter	Icons	print	Digit
1259	while working in MS-WORD you have to work with?	Both mouse and key board	Key board only	Mouse only	Non of these
1260	The toolbar in MS-WORD.....	Allow us to perform different functions without using menu bar	Allow the current time to be displayed	helps in displaying the position of insertion point	Allows you to move around in a document
1261	When you save a document for the first time,you have to click.....	Undo	Edit	Rename	Save
1262	Pressing enter key in document will.....	Starts a new line	Inserts a blank line	Starts a new paragraphs	None of these
1263	The page setup can used to set.....	Margins	Both A and D	None of these	Page layout
1264	Which of the following cannot be created by the mail merge command?	Envelops	Mailing labels	Form letters	None of the above

1265	To remove a tab from the ruler.....	Drag the tab from the ruler	Select the tab and press the delete key	double click the tab on the ruler	Select the tab and press the backspace key
1266	To insert a hard page break press....	ctrl+alt+d el	ctrl+shift	ctrl+enter	ctrl+tab
1267	The pagination of the document depends upon.....	The margin setting	The size of the paper	Page layout	All of these
1268	Which of the following is not a part of editing the text?	Replacin g words	Resizing text box	Running the spelling cheaker	None of these
1269	when you use an open command in the dialog box at a time,WORD lets you specify?	All the files	Miltiple file extension names	All of these	None of these
1270	Paragraph and character styles are available on?	Standard toolbar	Formatting toolbar	None of these	Drawing toolbar
1271	In the portrait orientation,the format of the page in which items are printed is.....	11-by-8.5 inch	8.5-by-11 inch	Any of A & B	None of these
1272	The temporary name given by MS-WORD to a newly opened document is.....	Graphic 1	Document 1	Picture 1	Worksheet 1
1273	The set of instruction which tells a computer how to perform any special work is called	data calculatio n	Program	file	information
1274	Which of the following works as an agent between hardware and user ?	Compiler	Operating system	Translator	All of these
1275	Programs written in an assembly language are converted into machine language in a computer by	assemble r	compiler	interpreter	processor
1276	Any program translated into machine language is calles.....	analog program	object code	personal program	official program
1277	The original program written in programming language is called	Youth program m	Source program	Ferm program	Loop program
1278	The word CAD is related to	account	design	media	science

1279	What is the use of back up in data base ?	to check the working of the system	for safety	To provide record of transaction	To find the lost data
1280	Page maker software is related to which operating system?	MS-DOS	Unix	Window	All of these
1281	A software which converts a huge levels language program into machine language called-	Compiler	Assemble	Loader	Interpreter
1282	Oracle is a	An operating system	Word processor	Datebase software	All of these
1283	Which software is used in word processing?	Page maker	Wordstar	MS-Word	All of these
1284	CAD stands for	Computer Algorithm for design	Computer Application in design	Computer Aided Design	All of these
1285	The function of an Assembler is.....	To convert basic language into machine language	To convert high level language into machine language	To convert assemble language into machine language	To convert assemble language into high level language
1286	he legel right to use software bsd on specific restrictions is granted via a	Software privacy policy	Software license	Software password manager	Software log
1287	Which software is used for creating resume?	MS-Word	Page maker	a and b both	None of these
1288	MS-Word is an example of -	Operatin g System	Application Software	Processing device	Input device
1289	People who write and taste the program are called-	Program mer	Computer Scientist	Software Engineer	Project Developer
1290	When you turn off the computer, the boot routin will perform this taste-	RAM test	Disk drive test	Memory Test	Power-on-self-test
1291	A detailed, written description of the programming cycle and the program, along with the test results and a printout of the program is called	Documen tation	Output	Reporting	Specsheet

1292	After turns on computer light the process of start is called.....	Application	Boot strap	System	Boot Strap
1293	The type of software that contols the internal operations in the computer and controls how the computerworks that all its part is which of thw following?	Sharewar e	Public Domain Software	Application Software	Operating System software
1294	Physical components that make up your computer are known as	Operatin g System	Software	Hardware	Web Browsers
1295	What is correcting errors in a program called ?	Compling	Debugging	Grinding	Interpreting
1296	In MS-WORD ,soft page break is.....	Manually inserted by user	Automatically inserted by word	Both A & B	None of these
1297	We can give paragraph spacing in.....	Cm .	Pt	Inch	All of these
1298	Pick out the wrong statement among the following?	A template also stores styles and macros	A template stores customized word command setting	A template is a blueprint for the text and graphics	You cannot make changes in the available template
1299	Using GO TO command in MS WORD,to go to page number 20 we enter.....and press ok.	20P	P20	20+	None of these
1300and.....are places to put repetitive information in a document's top and bottom margins in MS-WORD.	Rows setup	Gutter margins,Alternate facing margins	Headers/Footers	None of these

Answers

1201	Lenovo.
1202	Facebook.com
1203	Nokia Inc.
1204	Youtube
1205	Temple Run
1206	Kitkat
1207	BlackBerry.
1208	Linux
1209	Search Engine Optimization(SEO)
1210	Corel
1211	Digital Rights Management
1212	Farmville
1213	GM
1214	Safari
1215	Facebook
1216	Cisco
1217	VCR
1218	Mozpay
1219	Samsung
1220	First registered domain
1221	TCS
1222	Social Gaming
1223	Tata Sky
1224	Syntax errors
1225	Openoffice
1226	Dropbox
1227	utility
1228	Interfaces
1229	Patch
1230	Copy to save a data from original source to other destination
1231	User
1232	Open source software
1233	Hardware
1234	Database software
1235	A and B
1236	1969

1237	Assembly
1238	An operating system
1239	Keyboard
1240	Integrated Circuit
1241	Output
1242	Printer
1243	Portable network graphics
1244	MS office
1245	Dipika Padukone
1246	Wireless Fidelity
1247	Air Tickets
1248	T9
1249	Singapore
1250	140 Characters
1251	None of these
1252	The ruler bar
1253	All of these
1254	Select toolbar from view menu
1255	File/Open
1256	Press CTRL+TAB
1257	Edit
1258	Icons
1259	Both mouse and key board
1260	Allow us to perform different functions without using menu bar
1261	Save
1262	Starts a new paragraphs
1263	Both A and D
1264	None of the above
1265	Drag the tab from the ruler
1266	ctrl+enter
1267	All of these
1268	Resizing text box
1269	All of these
1270	Formatting toolbar

1271	8.5-by-11 inch
1272	Document 1
1273	Program
1274	Operating System
1275	assembler
1276	object code
1277	Source program
1278	design
1279	To find the lost data
1280	Window
1281	Compiler
1282	Datebase software
1283	All of these
1284	Computer Aided Design
1285	To convert assemble language into machine language
1286	Software license
1287	a and b both
1288	Application Software
1289	Programmer
1290	Power-on-self-test
1291	Documentation
1292	Boot strap
1293	Operating System software
1294	Hardware
1295	Debugging
1296	Automatically inserted by word
1297	All of these
1298	You cannot make changes in the available template
1299	P20
1300	Headers/Footers

Section-14

TELEMEDICINE



Telehealth is the distribution of health-related services and information via electronic information and telecommunication technologies. It allows long-distance patient and clinician contact, care, advice, reminders, education, intervention, monitoring, and remote admissions

Section-14

Each Section has 100 Multiple Choice Questions (MCQ).
Each question has four choices. Student to Tick the correct answer.

Sr. No.	Question	A	B	C	D
1301	The data for the graph can be taken from.....	A table in word document	Data file of a database package	A excel worksheet	All of these
1302	The fastest way to select sentence is.....	ctrl+shift	shift+s	ctrl+click on sentence	ctrl+A
1303	In MS-WORD already opened file can be closed by clicking on.....	On the left tip corner	button	X button on title bar	None of these
1304	Which is not type of indent?	Centre	Hanging	Left	First line
1305	In MS-WORD the easiest way to send consistant spacing before and after paragraph of a particular type is to use.....	Word style	Format/Paragraph	Page set up	Indenting
1306	With the help of break which can not broken?	Field	Column	Section	Page
1307is not present in goto option.	File	Page	section	Bookmark
1308	To get the rough idea of how your document would be printed select the.....menu.	Print	View normal	File print preview	Outline
1309	In MS-WORD to appear full form abbreviation automatically we can use.....option.	Auto text	Comments	Auto correct	Drop cap
1310	using MS-WORD a document file can not be saved as.....	Pagemaker	Text	HTML	None of these
1311	In print dialog box if the print range is given 10 then result will be.....	Print page 10	Print page 10 to last	Print pages from 1 to 10	Give error
1312	If you click on undo button?	It remove character formatting	It remove new text & restore old text	It removes old text	None of these

1313	Whenever a word does not fit at the end of current line it goes to starting of the next line is called.....	Word style	Auto correct	Word wrap	Paragraph
1314	A letter ,memo,report or other prepared is called.....	Slide	Database	Document	Worksheet
1315	The combination key to find command in MS-WORD is.....	ctrl+f1	ctrl+f	ctrl+f5	ctrl+s
1316	A way of assigning the name to the part of documents so that they can be easily accessed is called.....	File	Bookmark	Caption	Save
1317	Which key stroke is used to move end of document quickly?	Pgdn	Ctrl+end	Pgup	End
1318	While editing the document ctrl+àis the insertion point to.....	One line right	One line right side end	One line left	Next page
1319	While editing document,the color of selected text can be changed by.....	Format paragraph	Format text	Format font	None of these
1320is not present in picture option.	From file	Clip art	Object	Autoshape
1321	To create tab leader.....is used.	Ruler	Tabs	Table	Format tab
1322	To move selected text.....is used.	Cut/paste	Copy/paste	Copy	Replace
1323	To change size of document page.....	Page setup	Font	Paragraph	Enter
1324	Which is not in toolbar?	View	Drop cap	Ruler	File
1325is in tool menu.	Column	Mail merge	Font	Cut
1326	Text that justified is.....	Bold	Adjust to both margin	Centered	Text
1327	If you copy selected text.....is used.	Cut	Duplicate	Move	Copy
1328	The list in bottom of file menu.....	Display all files	None of above	Display last files	Exit
1329	The first line on word window where name of document is written called.....	Title bar	Ruler bar	Menu bar	Bar
1330	When you insert table in document them.....	Every line is dotted	Outlines every cell	None of these	No line
1331	Microsoft word iskind of software.	Processor	File	DBMS	Line

1332	The default view of document is.....	Print	Normal	Web	Sorter
1333	Find command is available in.....menu.	Tools	File	Edit	Format
1334	The paper orientation for printing is.....	Landscap e	File	Portrait	None of these
1335	The default size of page in word is.....	Legal	A4	Letter	None of these
1336	The magnifier button is available in.....	Formattin g	Format	Print preview	None of these
1337	The use of undo is.....	Remove both text and format	Remove format	Remove text	All of these
1338	Split option is in.....menu.	File	Edit	Window	Table
1339	To view the page number switch to.....	Full screen	Mirror image	Print layout	Outline
1340	Short key of redo is.....	ctrl+Y	Ctrl+A	Ctrl+E	Ctrl+Q
1341is not formatting toolbar.	Redo	Font	Alignment	Border
1342	The dialog box where the words searching capabilities are used is.....	Save as	Find	Open	save
1343	To convert "The computer" into "tHE cOMPUTER".....is used.	Toggle case	Lower case	Upper case	Title case
1344	To display any option in menu bar you must.....	Right click	Both A & B	Click	None of these
1345	To close the document.....command is used.	Close	End	Exit	Stop
1346	To select the text from insertion point to end of line.....	Press ctrl+home	Click on paragraph	Press ctrl+end	Click on selection bar
1347	which key is used to insert date?	Alt+shift+D	Alt+shift+E	Alt+shift+N	Alt+shift+F
1348key delete character from right side.	Home	Delete	Backspace	End
1349	Which key combination is used for creating new auto text entry?	Alt+F3	Alt+F6	Alt+F4	Ctrl+F3
1350	Format painter is used to.....	Copy selected text	Draw different shape	Copy format of	None of these

				selected text	
1351	To convert "H2O" into "H2O"option is used.	Subscript	Lower	Super script	Small
1352	To select complete paragraph by mouse pointer.....on paragraph.	Single click	Triple click	Double click	None of these
1353	Arrange all command is present in....menu.	File	Window	Edit	View
1354	Which key is used to reveal formatting?	Shift+F9	F1	Shift+F1	F9
1355	To spacyfy space between two lines.....is used.	Insert line	Line spacing	Insert space	None of these
1356shortcut key is used to replace the text.	ctrl+D	ctrl+H	ctrl+A	ctrl+R
1357	The delete and time command is.....	Insert last date & time	Insert date & time as u say	Insert current date & time	None of these
1358	Which of the following can't be selected?	Word	Selection bar	Letter	Line
1359	The insertion point is.....	Current font information	Name of document	Description of button display	Current location of text cursor
1360	Using full screen allows you.....	Display all opened documents	Use of document designed	Display only document	Cancel the change of document
1361provides list of synonyms.	Replace	Find	Thesaurus	None of these
1362	Maximum zoom percentage in MS-WORD is.....	50	30	2	5
1363	Window list is used for.....	Displaying all opened files	Allow to close files	Displaying last four opened files	None of these
1364	You can use style for.....	saving the file	Deleting file	Formattin g your document	All of these

1365is used to make multiple changes.	Drag and drop	Replace	Find	All of these
1366	When you indent paragraph.....	Move the text up by line	Push the text with margin	Move the text down by line	Change margin of page
1367	You always use.....before submitting document to other.	Spelling & Grammer	Find	Replace	Cut
1368	By default.....inch are reserved to header and footer.	0.5	2.5	1	1
1369	You can change the margin by.....	Checking margin boundaries on ruler	Dragging margin boundaries in ruler	Dragging scroll box on scroll bar	All of these
1370	To reverse the effect of last action.....is used.	Undo	Reverse	Copy	Replace
1371	To view all document on one screen.....option is used.	Arrange all	Split	Show	Window
1372are commonly used to find web pages.	Internet	Hyperlink	Web page	All of these
1373	Bold,Italic,Underline are the part of.....	Standard	Colour	Formattin g	Drawing
1374	To copy current document,on disc.....is used.	Copy	File	Save	Find
1375	The list in bottom of file menu.....	Display all opened file	Display no. of file	Display current file	None of these
1376	The default size of letter page is.....	8.5*11	8.5*14	8.5*12	8.5*10
1377	Which combination key is used for creating new autotext entry?	Alt+F3	Alt+F6	Alt+F4	Alt+F3
1378	Which is the shortcut commonly used to switch between application?	Alt+tab	Alt+ctrl	Alt+shift	Alt+s
1379	A data source is made up of.....	Text that changes with each version of a merged	Both text and graphics that change with each version of a merged document	Both A and B	None of this

		document			
1380	How print dialog box will be activate?	File/print	File/format	File/new	Print
1381	Page can be printed in landscape mode by selecting.....menu.	File-print-properties-layout-landscape	File-print-paper-source	File-print-preview	Print layout
1382bar shown on bottom of the document screen.	Task bar	Status bar	Menu bar	Tool bar
1383	By default there is.....line spacing.	Single	Double	Triple	None of these
1384	To shade work and paragraph.....option is used.	Border and shading	Background	Format	Fill
1385	To activate the office assistant.....key is used.	F1	F3	F2	F4
1386	By default information of header and footer is stored.....	On every page	On last page	On one page	None of these
1387	Switching between portrait and landscape.....option is used.	Page	Page setup	Page preview	File
1388	To display online help information that suggest more efficient ways to complete a task.....is used.	Find help	Index sheet	Office assistant	Content sheet
1389	Which key is used to mark of the contents entry?	Alt+shift+o	Ctrl+o	Alt+ctrl+o	None of these
1390	Times roman and comics sans are type of.....	Style	Font	Character	All of these
1391	Which one of following is a short cut commonly used to switch between?	Alt+tab	Alt+ctrl	Alt+shift	Alt+s
1392	Picture drawing allow to draw and modify.	Line	Picture	Space	All of these
1393	A word processor would be best suited to.....	Maintain an inventory	Type a research paper	Keep an a/c pf money spent	Do computer search in media centre
1394	Which is type of data?	Sound	Video	Text	All of above

1395	In text box to create a textoption is used.	From text box button	Format/align	format/paragraph/alignment	None of these
1396	Column tool on standard toolbar will.....	Column size	Del columns	Add column	All of these
1397	Which is the best alignment in word?	Justify	Right	Left	Indents
1398	You can not set.....with format menu.	Alignmen t	Line spacing	Backgrou nd	Margin
1399	In sentence you want to format single character you have to.....	Select paragraph h	Select that character	select sentence	Select line
1400	Adjusting text or word in between margins.....option is used.	Justify	Print preview	Word wrap	None of these

Answers

1301	All of these
1302	ctrl+click on sentence
1303	X button on title bar
1304	Centre
1305	Format/Paragraph
1306	Field
1307	File
1308	File print preview
1309	Auto text
1310	Pagemaker
1311	Print page 10
1312	It remove new text & restore old text
1313	Word wrap
1314	Document
1315	ctrl+f
1316	Bookmark
1317	Ctrl+end
1318	One line right side end
1319	Format font
1320	Object
1321	Format tab
1322	Cut/paste
1323	Page setup
1324	Drop cap
1325	Mail merge
1326	Adjust to both margin
1327	Copy
1328	Exit
1329	Title bar
1330	Outlines every cell
1331	Processor
1332	Normal
1333	Edit
1334	File

1335	Letter
1336	Print preview
1337	All of these
1338	Window
1339	Print layout
1340	ctrl+Y
1341	Redo
1342	Find
1343	Toggle case
1344	Click
1345	Close
1346	Press ctrl+end
1347	Alt+shift+D
1348	Delete
1349	Alt+F3
1350	Copy format of selected text
1351	Subscript
1352	Triple click
1353	Window
1354	Shift+F1
1355	Line spacing
1356	ctrl+H
1357	Insert current date & time
1358	Selection bar
1359	Current location of text cursor
1360	Display only document
1361	Thesaurus
1362	5
1363	Displaying last four opened files
1364	Formatting your document
1365	Replace
1366	Push the text with margin
1367	Spelling & Grammer
1368	0.5

1369	Dragging margin boundaries in ruler
1370	Undo
1371	Arrange all
1372	Hyperlink
1373	Formatting
1374	Copy
1375	None of these
1376	8.5*11
1377	Alt+F3
1378	Alt+tab
1379	Text that changes with each version of a merged document
1380	File/print
1381	File-print-properties-layout-landscape
1382	Task bar
1383	Single
1384	Border and shading
1385	F1
1386	On every page
1387	Page setup
1388	Office assistant
1389	Alt+shift+o
1390	Font
1391	Alt+tab
1392	Picture
1393	Type a research paper
1394	All of above
1395	format/paragraph /alignment
1396	Add column
1397	Justify
1398	Background
1399	Select paragraph
1400	None of these

Section-15

5G



In telecommunications, 5G is the fifth generation technology standard for broadband cellular networks, which cellular phone companies began deploying worldwide in 2019, and is the planned successor to the 4G networks which provide connectivity to most current cellphones.

Section-15

Each Section has 100 Multiple Choice Questions (MCQ).
Each question has four choices. Student to Tick the correct answer.

Sr. No.	Question	A	B	C	D
1401option is not in format menu.	Theme	Tabs	Font	Print
1402	To see document in explorer.....is used.	Save as	Web page preview	Save web page	Website
1403	You can set margin by ruler as well as.....	Tabs	Paragraph	Line spacing	page setup
1404	Customize toolbar come inmenu.	View	Edit	File	Tools
1405	To save file of HTML extension you click file menu and than select.....option.	Save as HTML	Web page preview	Save as web page	Print
1406	The text that can be seen in all pages are called.....	Header-footer	Format	Footnote-endnote	Paragraph
1407	To copy the format we can use.....	Brush	Format painter	Copy	Copy-paste
1408	Which key is used to mark citation?	Alt+shift+F	Alt+ctrl+E	Ctrl+I	Alt+shift+I
1409	You can't change column width using.....	Right click on header and select column	Double click on it	Drag the column	Nine of these
1410	If you want to copy a selected text,which option do you press?	Move	Copy	Cut	Duplicate
1411	Which key is used to switch document?	Ctrl+F2	Ctrl+F6	Ctrl+F9	None of these
1412	To start a new line press.....key.	Shift+enter	Ctrl+delete	Enter	None of these
1413	Bold,Italic,Underline are the part of.....toolbar.	Formattin g	Central	Standard	Drawing
1414	Which of the following is an incorrect statement?	Hyphenation can be done automatically or manually	Hyphenation can affect page break	The hyphenation facility is in the insert menu	None of these

1415	Identify the incorrect statement.	Headers are the one that are printed on the top margin of the page and footer are printed in the bottom margin.	headers and footers normally carry information like page number,date company name etc.	A single page document will not normally have the header or footer	Microsoft word will not allow to have header and footer on a single page document.
1416	Word document can be navigated in.....	Web layout view	Normal view	Print layout view	All of these
1417	In MS-WORD,which combination key do you press to delete an entire word.	Double click+break	Double click+delete	Double click+print screen	None of these
1418	When Microsoft word gets loaded, the opening screen displays a document named.....	Doc1	Document1	Document	No document name is displayed
1419	To select a sentence, click anywhere on the sentence while holding the.....	Shift	Ctrl	Esc	Alt
1420	Paragraph mark signify.....	Beginning of a paragraph	Current cursor position in the paragraph	Saving has been done till the marked paragraph	Press of enter key to mark the end of paragraph
1421	The content of the clip board remain the same until.....	You cut other text	You shut down your computer	You copy other text	All of these
1422	When you activate the spelling and grammar checker.....	It allows you to either correct the misspelled word manually.	It display the miss-spelled words in the document	It highlights to misspelled words in a dialog box	All of these
1423	Which of the following is not an option of edit menu?	Page set up	Copy	Cut	Paste

1424	Drop caps applied to.....	Character	Sentences	Words	None of these
1425	A vertical line in text area, where we can insert text is called.	Cell pointer	Mouse preview	Cursor	None of these
1426	The automatic page breaks appears as dotted lines across the document in.....	Normal view	Print preview	print layout view	None of these
1427	Which of the following is true in relation to clip-art?	Word displays available pictures in clip art	You can re-color clip art	You can use a tool bar button or a placeholder to insert clipart	All of these
1428	Section break in word can be only at.....	Even and odd page	next page	Continuous	All of these
1429	To start spelling and grammar function key is.....	F5	F7	F6	None of these
1430	IT stands for:	Information Technology	Intelligent Technology	Integrated Technology	Interesting Technology
1431	A collection of related information sorted and dealt with as a unit is a:	disk	data	file	floppy
1432	The process of a computer receiving information from a server on the Internet is known as:	pulling	downloading	pushing	transferring
1433	_____ is the process of carrying out commands.	Fetching	Executing	Storing	Decoding
1434	Which of the following groups consist of only output devices?	Scanner, Printer, Monitor	Mouse, Printer, Monitor	Keyboard, Printer, Monitor	Plotter, Printer, Monitor
1435	The rectangular area of the screen that displays a program, data, and/or information is a	title bar	dialog box	button	window
1436	An error is also known as:	bug	cursor	cursor	icon
1437	Sending an e-mail is similar to:	picturing an event	writing a letter	narrating a story	creating a drawing

1438	Microsoft Word is an example of:	an operating system	application software	a processing device	an input device
1439	Which part of the computer displays the work done?	RAM	monitor	printer	ROM
1440	Which is the part of a computer that one can touch and feel?	Hardware	Programs	Software	Output
1441	To access properties of an object, the mouse technique to use is —	Dragging	Right-clicking	Dropping	Shift-clicking
1442	Connections to the Internet using a phone line and a modem are called connections.	Digital	Broadband	Dial-up	Dish
1443	A Website address is a unique name that identifies a specific _____ on the Web.	Web browser	Website	PDA	None of these
1444	A word in a web page that, when clicked, opens another document is called	Anchor	Hyperlink	Reference	URL
1445	_____ performs simple mathematics for the CPU.	ALU	BUS	DIMM	Register
1446	_____ is processed by the computer into information.	Numbers	Input	Processor	Data
1447	Personal computers can be connected together to form a _____	Server	Enterprise	Supercomputer	Network
1448	What menu is selected to cut, copy, and paste?	File	Special	Tools	Edit
1449	_____ is the process of finding errors in software code.	Compiling	Running	Testing	Debugging
1450	Changing an existing document is called _____ the document.	creating	modifying	editing	adjusting
1451	To move to the beginning of a line of text, press the _____ key.	home	pageup	nil	enter
1452	The area inside a window is called the...	Work space	None of these	work place	Work area
1453	Press..... key to deactivate the start menu.	Ctrl+M	Esc	Shift+Esc	Shift +Esc
1454	Loading of Operating System in the memory is called.....	Uploading	Installing	Downloading	Booting

1455	The little pictures that help you to tell what to do in windows is called	Bits	Pixels	Bytes	Icons
1456	What is the full form of CLR?	Clear the Reports	Clear the screen	Close Lifetime Report	Non of these
1457	There is a..... on the desktop which stores deleted files.	Start	Task	Recycle bin	File
1458	DLL stands for.....	Database link Library	Data Link Library	Dynamic Link Library	None Of these
1459	Which of the following files acts as the loader for windows?	WIN.COM	WIN EXE	DOSX.EXE	WIN.BAT
1460	RTF Stand for.....	Real time fonts	Real time files	Rich text format	Rich text font
1461	The symbol that shows you where the mouse is on the screen is called.....	Icon	Director	Pointer	Arrow
1462	Bussiness graphics are called.....	Design graphics	Analytical graphics	Presentat ion graphics	All of above
1463	Which of the following option is used to enlarge a window to its maximum size?	Open a group window	Restore a window	Maximize a window	Minimize a window
1464	You magnify a portion of a drawing so that you can make change pixels at a time using the... command	Pixel area	Zoom in	Enlarge area	Magnify
1465	Which of the following is the first step to active the icon?	Select an item	Deselect an item	Unmark an item	Mark an item
1466	Which of the following is not included in control Panel?	Sound	All of the above	Print manager	Font
1467	The key you press when you need some kind of assistance on a specific command is.....	F1	Ctrl	Tab	Fsc
1468	Which key is use d to Undo the minimize done by WINKEY+M and WINKEY+D?	WINEKEY+SHIFT+T	WINKEY+SHIFT+D	WINKEY+SHEFT+L	None of above
1469	Which key is used to Minimize all windows?	WINKEY+E	WINEKEY+K	WINKEY+F	None of these

1470	Which of the following key is used to the Microsoft Help and Support center?	WINKEY +F2	WINKEY+F9	WINKEY +F2	None of these
1471	Which key is used to switch to the next workbook Windows?	CTRL+F2	SHIFT+F6	CTRL+F10	CTRL+F6
1472	Which key is used to open Microsoft Explorer?	WINKEY +J	WINKEY+E	WINKEY +S	All these
1473	What is the name of windows drawing program?	File manage	control panel	write	Paintbrush
1474	The.....is located below the title bar,that lists all the options.	Status bar	Title bar	Scroll bar	Menu bar
1475	File name with extension. VXD represents....	Text file	Normal application file	device drivers	Picture file
1476	Which Key is use for Open the Search Box ?	Ctrl +L	Ctrl +S	Ctrl +I	Ctrl +E
1477	Which Key Is Use For Stop The Downloading ?	End	Home	Tab	None Of These
1478	Which Key Is Use For Open The History Box ?	Ctrl +L	Ctrl +I	Ctrl +F	Ctrl +H
1479	Which Key Is Use For Change paper Headers And Footer Orientation and Margin For The This page ?	Alt +U	Alt +A	Alt +C	Alt +Z
1480	Which Key Is Use For Display The First Page To Be Printed ?	Alt +End	Alt +Minus	Alt +Plus	Alt +Home
1481	Which Key Is Used to sort lines of data in a file in reverse order ?	short	sh	st	sh-r
1482	Which key is used for type the Number of Page that Want?	Alt+U	Alt+Z	Alt+A	Alt+End
1483	In Print Preview Mode Which Key Is Use For Zoom Out ?	Alt +Minus	Alt +Plus	Alt +End	Alt +Home
1484	Which command is used to display the top of the file?	cut	head	more	grap
1485	Which Key is Use for Delete the Current mail in outlook?	Ctrl +Z	Ctrl +k	Ctrl +S	Ctrl +D
1486	Which Comaand is used to remove a directory?	rd	rmdir	dldir	rdil

1487	Which key is use for sends the current mails in Outlook?	Ctrl +Enter	Ctrl +R	Ctrl +Y	Ctrl +P
1488	Which of the following is not an audio media file ?	MP3	WaV	Dat	Pdf
1489	Which of the followings file is digital recorded sound file ?	Wave File	Midi File	Pdf File	None of these
1490	MPEG Is a..... type file	A Sound File	Video File	Movie File	All Of these
1491	Which of the following is not the search engine ?	Google	Lycos	Infoseek	Sinfeer
1492	A host on the internet finds another host by its....	Postal Address	Electronic Address	Ip Address	All of these
1493	Which of the following domain is applied to education al institutions ?	.Com	.gov	.Org	.edu
1494	Which of the following keys is used to replace a single character with new text?	s	S	r	c
1495	Galaxy Note 7 is a smart phone from which global giant?	Apple	HTC	Samsung	LG
1496	Which social networking lets you reply, like and retweet a person's tweet?	Faceboo k	LinkedIn	Twitter	Instagram
1497	Athlon is the brand name applied to a series of x86-compatible microprocessors designed and manufactured by which company?	AMD	Intel	Nvidia	Core
1498	.mll is the Top level domain used exclusively by the military of which country?	china	USA	India	France
1499	Alec Oxen ford is the co-founder of which classfieds company in India ?	OLX	Quikr	Craigslist	Amazon
1500	Jio is a Mumbai –based provider of 4G internet, mobile telephony, broadband services, and digital services in India from which company?	Reliance	Airtel	Vodafone	Idea

Answers

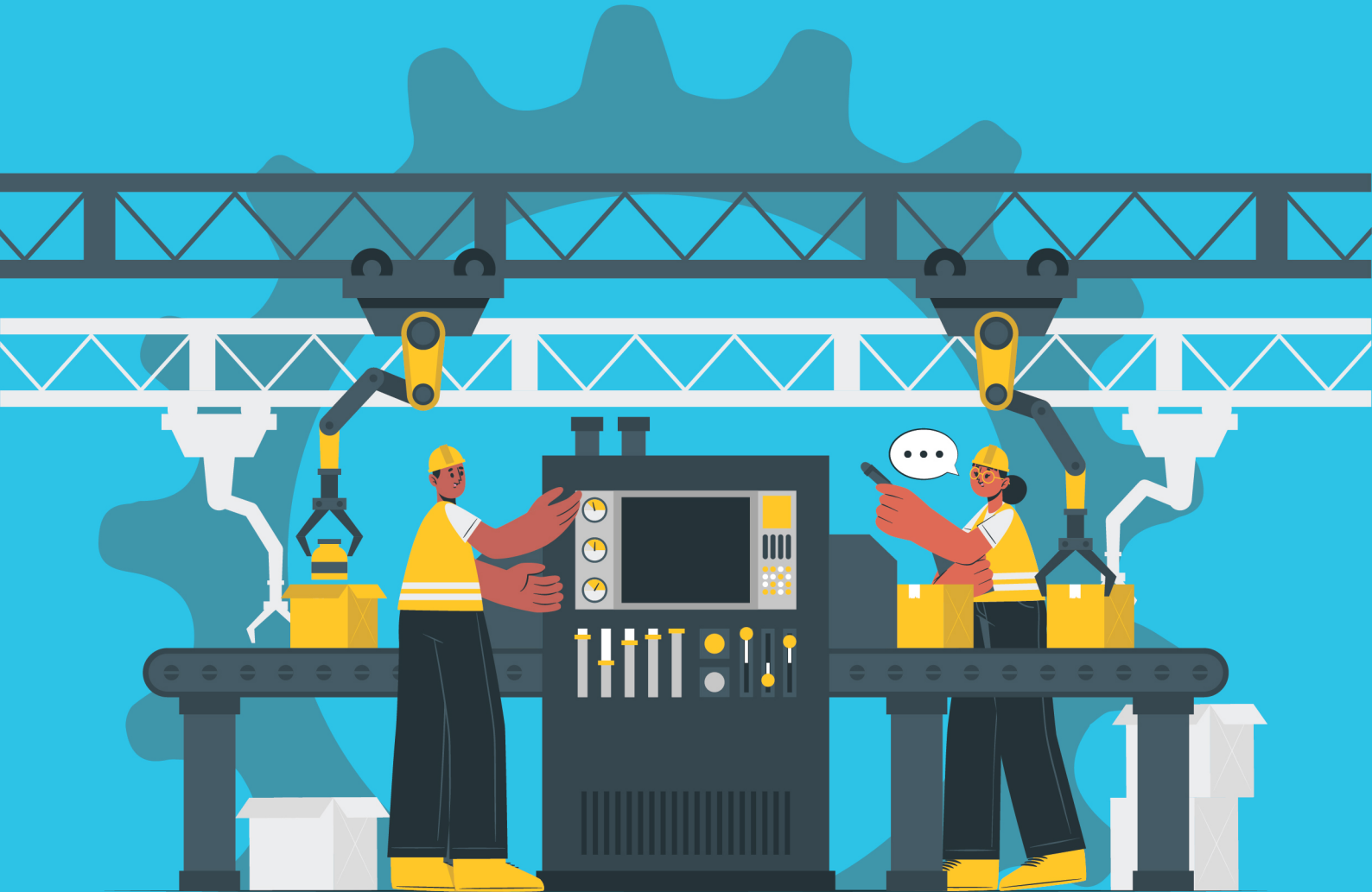
1401	Tabs
1402	Save as
1403	Paragraph
1404	View
1405	Print
1406	Paragraph
1407	Copy
1408	Alt+shift+l
1409	Right click on header and select column
1410	Copy
1411	Ctrl+F6
1412	Shift+enter
1413	Formatting
1414	The hyphenation facility is in the insert menu
1415	Microsoft word will not allow to have header and footer on a single page document.
1416	All of these
1417	Double click+delete
1418	Document1
1419	Ctrl
1420	Current cursor position in the paragraph
1421	You copy other text
1422	All of these
1423	Page set up
1424	Character
1425	Cursor
1426	Normal view
1427	All of these

1428	All of these
1429	F7
1430	Information Technology
1431	file
1432	downloading
1433	Executing
1434	Plotter, Printer, Monitor
1435	window
1436	bug
1437	writing a letter
1438	a processing device
1439	monitor
1440	Hardware
1441	Right-clicking
1442	Dial-up
1443	None of these
1444	Hyperlink
1445	ALU
1446	Data
1447	Network
1448	Edit
1449	Testing
1450	editing
1451	home
1452	Work area
1453	Esc
1454	Booting
1455	Icons
1456	Non of these
1457	Recycle bin
1458	Dynamic Link Library
1459	WIN EXE
1460	Rich text format
1461	Arrow
1462	All of above

1463	Maximize a window
1464	Magnify
1465	Select an item
1466	Print manager
1467	F1
1468	None of above
1469	None of these
1470	None of these
1471	CTRL+F6
1472	WINKEY+E
1473	Paintbrush
1474	Menu bar
1475	device drivers
1476	Ctrl +E
1477	None Of These
1478	Ctrl +H
1479	Alt +U
1480	Alt +Home
1481	sh-r
1482	Alt+A
1483	Alt +Minus
1484	head
1485	Ctrl +D
1486	rmdir
1487	Ctrl +Enter
1488	Pdf
1489	Wave File
1490	Video File
1491	Sinfeer
1492	Ip Address
1493	.edu
1494	s
1495	Samsung
1496	Twitter
1497	AMD
1498	USA
1499	OLX
1500	Reliance

Section-16

MACHINE LEARNING



Machine learning is the study of computer algorithms that improve automatically through experience and by the use of data. It is seen as a part of artificial intelligence.

Section-16

Each Section has 100 Multiple Choice Questions (MCQ).
Each question has four choices. Student to Tick the correct answer.

Sr. No.	Question	A	B	C	D
1501	what is a full form of WIFI?	Wireless Facility	Wireless Fidelity	Wireless Faculty	Wireless Formation
1502	What is a device which a smart phone having a screen which is intermediate in size between that of a typical smartphone and a tablet computer?	Tablet	Phablet	Laptop	Pamtop
1503	It was formerly called internet explorer how do we know it today?	EDGE	CHROME	SAFARI	DRIVE
1504	This key when pressed, often is interpreted by software as "stop", when sent from the computer to an external device. Which key?	SHIFT	CTRL	ESC	Home
1505	Name the program that processes and converts statements written in a particular programming language into machine language.	Editor	Compiler	operating system	Explorer
1506	This program compresses large files into a smaller files.	Win Shrink	compressor	WinZip	Editor
1507	This is a function key seen on the keyboard	SHIFT	CTRL	F7	F9
1508	What Power Point features will you use to apply motion effects to different objects of a slide?	slide transition	animation objects	animation scheme	Preview
1509	What is the main circuit board of a computer that contains the CPU?	Motherboard	Integrated circuit	Printed circuit board	Chipset
1510	Name the local memory that is used as a buffer during data transfer?	CD – ROM	Cache	Hard disk	Temp Memory
1511	It is used in shops and supermarkets extensively to read the vertical zebra-striped marks printed on the products?	Bar code Reader	scanner	Smart card Reader	Camera
1512	The standard language used to create all web pages is:	HTML	Fortran	Java	C++

1513	LED, CRT and LCD are the three different types of:	USB	Monitors	Printers	CPU
1514	Pixel is a new phone from which company?	Apple	Samsung	Google	Tesla
1515	This is not an anti- virus software?	Bitdefender	Kaspersky	Prisma	Quickheal
1516	What is command used to test if a device on the network is reachable?	Ping	Echo	Flash	Connect
1517	An infinite loop can be terminated by this command?	Exit	Break	Abort	Cancel
1518	When you insert an Excel file into a Word document, the data is considered To be what?	Hyperlinked	placed in a word table	Embedded	Attached
1519	This virus is explicitly designed to hide itself from detection by antivirus software	Stealth virus	Polymorphic virus	Parasitic virus	Trojan
1520	Who is the Indian partner of DOCOMO?	Tata	Birla	Reliance	Airtel
1521	Which game allows you to use many power-ups provided in this game, these include jetpacks, super jumpers, super sneakers, coin magnets and score multipliers?	Subway surfers	Angry birds	Temple run	FootBall
1522	What does Vo stand for in VoLTE (Long-Term Evolution)?	vocal octave	voice over	voltage over	Voice On
1523	Which of this is not a key on a QWERTY Keyboard?	Esc	Ins	Pg Sd	Enter
1524	What is an electronic flash memory data storage device used for storing digital information?	CDROM	Memory Card	Cloud Storage	Temp Storage
1525	Which IT Company in India has the tag line 'Experience Certainly?'	TCS	HCL	WIPRO	Reliance
1526	Black, ERA 4K 1 X AND ERA 2 are all smartphones made by which company?	GIONEE	XOLO	NOKIA	MI
1527	Which company creates the CENTRINO line of processors?	AMD	ASUS	INTEL	WIPRO
1528	What is a software application designed to run on mobile devices such as smartphones and tablet computers?	virus	App	Browser	Setting

1529	This is the symbol used on a keyboard to represent the conjunction word "and".	&	*	+	%
1530	95,98,2000, XP, VISTA, 7,8 AND 10 are all version of which operating system?	windows	safari	Linux	Chrome
1531	Which products by Apple is called 'Most Personal Product ever by Apple'?	music player	Laptop	smartwatch	Tablet
1532	Which country became the first to ban smartwatches and other wearable devices for its armed forces in May 2015?	England	France	china	Italy
1533	Med Mantra is a hospital management and information solution offering by which company?	TCS	HCL	CTS	Infosys
1534	Mahendra singh Dhoni and Prateek Babbar appear in the ads of which mobile maker?	Intex	Oppo	Lava	Vivo
1535	What was developed by August Dvorak and William Dealey in 1936 ?	Mouse	keyboard	calculator	CPU
1536	What term is used to describe a piece of software which is no longer distributed or supported by its developer ?	firmware	shareware	Abandonware	Smartware
1537	If it .in for India ,.uk for Britain , .cn for China then for whom it is '.my.'?	Myanmar	Malaysia	Mayotte	Mozambic
1538	Bjarne Stroustrup created which programming language in 1979 while working at Bell Labs? Its name comes from a pun involving the increment operator?	COBOL	C++	BASIC	JAVA
1539	SHAREit is a free application to transfer files from a WI-FI compatible device to another similar one. Which company has developed SHAREit ?	Lenovo	Sony	Asus	Apple
1540	What was invented by Dr MARTIN cooper of Motorola in 1973 and was called Dyna TAC(Dynamic Adaptive Total Area Coverage)?	RFID	MOBILE PHONE	LASER	GSM

1541	How many Function keys would one find on a standard keyboard?	10	11	12	16
1542	In 1964, John G. Kemenly and Thomas E. Kurtz designed which original language at DARMOUTH College in New Hampshire , United States ?	BASIC	C++	PASCAL	JAVA
1543	'Most Wanted', 'Underground', 'Nitro' are versions of which popular racing video game?	Need for speed	Grand Turismo	F1 Grand prix	Football
1544	On 16 June , 2017; which ecommerce company agreed to acquire whole Foods Market for \$ 13.7 billion ?	Flipkart	Amazon	Ebay	Paytm
1545	Which US telecom giant recently completed the \$4.5B acquisition of Yahoo ?	T- mobile	Spirnt	Verizon	Orange Mobile
1546	Which widely used programming language created by James Gosling in 1995 was named after a kind of coffee said to be consumed in large quantities by the language's creator? Its logo also pays tribute to this .	C++	Java	Logo	Linux
1547	Name the game developed by Niantic Labs that became the most downloaded app on the App Store in their first week ?	Temple run	Angry birds	Pokemon Go	Spartan
1548	Wily Were Wolf , Xenial Xerus , Yakkety Yak and Zesty zapus are all code names for which OS ?	Ubuntu	Windows mobile	macOS	Windows Vista
1549	With which e- commerce Giant in India would you associate Sachin Bansal & Binny Bansal ?	Flipkart	Amazon	Snapdeal	E-bay
1550	Which Indian bank has recently acquired Free charge for \$60 million from Snapdeal?	State Bank of India	Axis Bank	ICICI Bank	HDFC
1551	Creator of which operating system had planned to name it "Freax" ?	Minix	Unix	Linux	Obunutu
1552	What term is used to describe a product , typically computer hardware or software that is announced to the general public but	vapour ware	shareware	Groupware	Smartware

	is never actually manufactured nor officially cancelled ?				
1553	If it is .bo for Bolivia, then for whom it is .cl ?	Chile	Christmas island	Colombia	Czech
1554	Computer Sellers often talk of something called SOHO segment. What does SOHO stands for ?	School and Home	Software and Hardware	Small office home office	Sign off home office
1555	On a computer key board , above which key is the symbol '#' seen?	3	4	3	6
1556	In December 2009 the first game released of the series. It primarily involved shooting birds into pigs' fortresses. Which game ?	angry birds	snake	subway surfers	Call of Duty
1557	Which of the following is a Google product ?	windows	face time	you Tube	office 365
1558	Fill in the blank . USB is the short form for universal serial _____.	board	bus	bolt	body
1559	What is the keyboard short cut in MS word for 'Underline Text' ?	Ctrl + A	Ctrl + T	Ctrl + U	Ctrl + G
1560	The sharp J-SH04 mobile was the first phone to have ?	Camera	iris scanner	finger print	Bluetooth
1561	If it is .in for India, .UK for Britain , .cn for China then for whom is it '.mm'?	Myanmar	Malaysia	Mayotte	mongolia
1562	" Best Resolution Audio Visual Integrated Architecture " or BRAVIA is a range / brand of technology products from which company ?	Lenovo	Sony	LG	Samsung
1563	What is the extension that you would have when you save a file on paintbrush ?	.jpg	.bmp	.avi	.png
1564	What term is used to describe shapes that are though irregular evoke some pattern ?	Octal	Fractal	Graphical	Circle
1565	Which online company claims that "A" in its name stands for "Anything" ?	Yahoo.com	Amazon.com	Arzoo.com	Adobe.com

1566	If it is .IK for Shri Lanka then, for whom it is .tr ?	Tulavu Islands	Taiwan	Turkey	Thailand
1567	Niklaus Wirth is known as the father of which programming language that was named after a French mathematician and physicist?	Basic	Pascal	Ruby	Java
1568	Which famous gaming company was formed by the merger of two companies Rosen Enterprises by David Rosen & Service Games by Richard Stewart?	Nintendo	Activision	Sega	Premedia
1569	Which software has .pmd as its default extension ?	CorelDraw	Microsoft Access	Adobe PageMaker	Photoshop
1570	Tennis superstar Serena Williams is engaged to Alexis Ohanian . He is the cofounder of which of the following?	My Space	Tumblr	Reddit	Yahoo

Answers

1501	Wireless Fidelity
1502	Phablet
1503	EDGE
1504	ESC
1505	Compiler
1506	WinZip
1507	F7
1508	animation objects
1509	Motherboard
1510	Cache
1511	Bar code Reader
1512	HTML
1513	Monitors
1514	Google
1515	Prisma
1516	Ping
1517	Break
1518	placed in a word table
1519	Stealth virus
1520	Tata
1521	Subway surfers
1522	voice over
1523	Pg Sd

1524	Memory Card
1525	TCS
1526	XOLO
1527	INTEL
1528	App
1529	&
1530	windows
1531	smartwatch
1532	china
1533	TCS
1534	Lava
1535	keyboard
1536	Abandonware
1537	Malaysia
1538	C++
1539	Lenovo
1540	MOBILE PHONE
1541	12
1542	BASIC
1543	Need for speed
1544	Amazon
1545	Verizon
1546	Java
1547	Pokemon Go
1548	Ubuntu

1549	Flipkart
1550	Axis Bank
1551	Linux
1552	vapour ware
1553	Chile
1554	Small office home office
1555	3
1556	angry birds
1557	you Tube
1558	bus
1559	Ctrl + U
1560	Camera
1561	Malaysia
1562	Sony
1563	.bmp
1564	Fractal
1565	Amazon.com
1566	Turkey
1567	Pascal
1568	Sega
1569	Adobe PageMaker
1570	Reddit

આપણી ગ્રામ પંચાયતમાં હવે ડિજિટલ સેવા સેતુ ઉપલબ્ધ

ગ્રામ્ય વિસ્તારના લોકોને શહેર કે તાલુકા સુધી જવું ન પડે અને સ્થાનિક સ્તરે જ ઓછામાં ઓછા સમયમાં સરકારી સેવાઓનો લાભ મળી શકે તે માટે સરકારને નાગરિકો સાથે જોડતો સેતુ



ગ્રામજનોને ગુજરાત સરકાર દ્વારા પ્રજાલક્ષી સેવાઓનો 'વલ કે ગર્વનલ્સ'ના અભિગમ સાથે ઘરઆંગણે લાભ પહોંચાડવામાં આવશે...



ગુજરાત સરકારના ડિજિટલ ગુજરાતના સપનાને સાકાર કરવાના ભાગરૂપે
“ડિજિટલ સેવા સેતુ” પ્રોજેક્ટ અંતર્ગત હવે ગામડાઓમાં સરકારી સેવાઓ જેવી કે;



આવકનો
દાખલો



રેશનકાર્ડની
સેવાઓ



મિન અનામત
વર્ગો માટેના
દાખલા



વિધવાનો
દાખલો



ધાર્મિક
લઘુમતી અંગેનું
પ્રમાણપત્ર



ભાષાકીય
લઘુમતી અંગેનું
પ્રમાણપત્ર



તથા ૭/૧૨ અને ૮/અ ના ઉતારા તેમજ અન્ય ૨૦થી વધુ સરકારી સેવાઓનો લાભ ગ્રામપંચાયત કક્ષાએ જ સરળતાથી મેળવી શકાશે.

ફાયદાઓ



સમઠની વરો
બચત



મિલવરૂરી
ખર્ચમાંથી વરો
મુક્તિ



ગ્રામ્ય કક્ષાએ પંચાયત
ઑફિસેથી 174થી
સેવાઓની પ્રાપ્તિ



ઓછામાં ઓછા
સમયમાં જરૂરી
સેવાઓનો લાભ



તમામ સેવાઓ બધી
એક જ ઑફિસથી
વરો પ્રાપ્ત



GUJARAT COUNCIL ON SCIENCE AND TECHNOLOGY
Dept of Science & Technology, Government of Gujarat

Block B, 7th Floor, M. S. Building, Nr. Pathikashram, Sector 11,
Gandhinagar-382011, Phone: 079-23259362

Fax: 079-23259363, Email: info-gujcost@gujarat.gov.in